

# For Sale by Private Treaty

Offered By



**THE 88 RANCH**  
**51089 871 RD**  
**ORCHARD, NE 68764-6445**  
**88ranch@gmail.com**  
**www.88ranch.com**

*All comments, breeding information and calf-at-side notations are provided by the seller. and are wholly the responsibility of the buyer to verify. AGA offers no guarantee of any such claims.*

Herdbook Data for Registry No. - AMGV1560750

Bull

Listing No. - 1



Name: VALS 88TAHOE 010

Tattoo: VALS 010K

GV%: PC4.7

4.7% GV | 95.3% AN

Color: Black

HPS: Polled

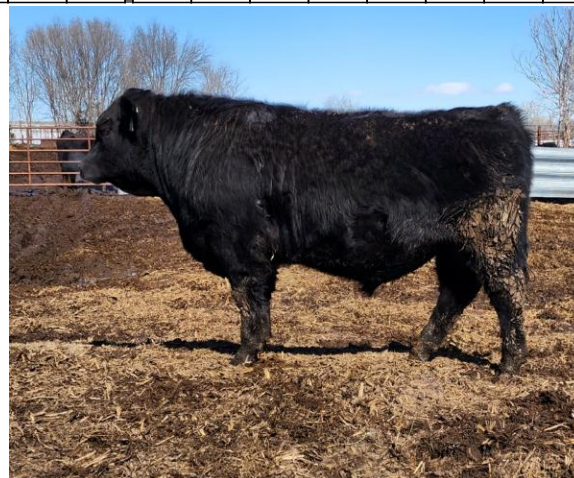
Breeder: 9528 - THE 88 RANCH

DOB: 2/20/2022

Subject Animal	Expected Progeny Differences												Intake and Carcass						Index Values				
	Growth and Maternal																						
	CED	BW	WW	YW	MK	TM	CEM	HP	PG30	ST	DOC	DMI	YG	CW	REA	MB	FT	ADG	RFI	\$Cow	FPI	EPI	
EPD	16	-2.8	83	132	21	62	7	10.01	-0.59	18	14		0.08	45	0.46	0.71	0.03					99.98	
ACC	0.27	0.34	0.32	0.32	0.21		0.25	0.08	0.04	0.18	0.22		0.20	0.25	0.23	0.20	0.20						
Rank	15	10	10	10	50	20	40	10	90	15	10		95	15	70	2	>95					1	
EPD	16	-2.3	96	155	21	69	6	12.01	-2.10	21	14	-0.025	0.11	62	0.61	0.79	0.04	0.141	-0.139	144.92	109.61	253.93	
ACC	0.94	0.97	0.96	0.96	0.79		0.84	0.26	0.17	0.42	0.91	0.28	0.62	0.86	0.82	0.83	0.77	0.25	0.17				
EPD	15	-2.0	78	128	21	60	7	8.02	0.91	15	13		0.06	34	0.38	0.62	0.03					94.03	
ACC	0.28	0.36	0.32	0.30	0.25		0.27	0.08	0.01	0.14	0.21		0.20	0.24	0.23	0.20	0.20						

Balancer Non-Parent Percentile Ranking

	BW	WW	YW	REA	IMF	FAT
Adj	68	642	1082			
Ratio	91.0	99	92			



TEHAMA UPWARD Y238 -- AMAN16760354

SIRE: TEHAMA TAHOE B767 -- AMAN17817177

TEHAMA MARY BLACKBIRD Y684 -- AMAN16876258

S A V RAINFALL 6846 -- AMAN18578963

DAM: VALS 88 RAINFALL 010 OF 8113 -- AMGV1499375

VALS 88 CONFIDENCE PLUS 8113 -- AMGV1445348

Moderate framed & thick like his Rainfall dam. This Angus Tahoe son should be safe on heifers.

Herdbook Data for Registry No. - AMGV1560742

Bull

Listing No. - 2



Name: VALS 88 TAHOE 015

Tattoo: VALS 015K

GV%: PC7.9

7.9% GV | 92.2% AN

Color: Black

HPS: Polled

Breeder: 9528 - THE 88 RANCH

DOB: 2/23/2022

Subject Animal	Expected Progeny Differences												Intake and Carcass						Index Values				
	Growth and Maternal																						
	CED	BW	WW	YW	MK	TM	CEM	HP	PG30	ST	DOC	DMI	YG	CW	REA	MB	FT	ADG	RFI	\$Cow	FPI	EPI	
EPD	16	-2.4	85	140	22	64	7	9.15	-0.90	18	13		0.11	53	0.48	0.66	0.03					99.82	
ACC	0.26	0.33	0.31	0.32	0.20		0.25	0.08	0.04	0.16	0.21		0.19	0.24	0.22	0.20	0.19						
Rank	15	15	5	3	40	10	40	15	90	15	25		>95	4	70	3	>95					1	
EPD	16	-2.3	96	155	21	69	6	12.01	-2.10	21	14	-0.025	0.11	62	0.61	0.79	0.04	0.141	-0.139	144.92	109.61	253.93	
ACC	0.94	0.97	0.96	0.96	0.79		0.84	0.26	0.17	0.42	0.91	0.28	0.62	0.86	0.82	0.83	0.77	0.25	0.17				
EPD	16	-3.1	72	118	23	59	9	6.28	0.30	14	12		0.10	38	0.29	0.52	0.03					89.35	
ACC	0.26	0.36	0.31	0.30	0.25		0.27	0.08	0.01	0.14	0.20		0.18	0.23	0.22	0.19	0.19						

Balancer Non-Parent Percentile Ranking

	BW	WW	YW	REA	IMF	FAT
Adj	75	646	1201			
Ratio	99.0	100	103			



TEHAMA UPWARD Y238 -- AMAN16760354

SIRE: TEHAMA TAHOE B767 -- AMAN17817177

TEHAMA MARY BLACKBIRD Y684 -- AMAN16876258

S A V RAINFALL 6846 -- AMAN18578963

DAM: VALS 88 RAINFALL 015 OF 8124 -- AMGV1499650

VALS 88 LD CAPITALIST 8124 OF 124 -- AMGV1445331

I've really liked the Tahoe sons and love his daughters! Rainfall dam.



Herdbook Data for Registry No. - AMGV1560746

Bull

Listing No. - 5



Name: VALS 88 TAHOE 033

Tattoo: VALS 033K

GV%: PC12.5

12.5% GV | 87.5% AN

Color: Black

HPS: Polled

Breeder: 9528 - THE 88 RANCH

DOB: 2/24/2022

		Expected Progeny Differences											Intake and Carcass						Index Values				
		Growth and Maternal																					
		CED	BW	WW	YW	MK	TM	CEM	HP	PG30	ST	DOC	DMI	YG	CW	REA	MB	FT	ADG	RFI	\$Cow	FPI	EPI
Subject Animal	EPD	14	-1.4	92	148	22	68	7	7.48	-0.54	18	14		0.05	60	0.67	0.74	0.02				104.78	
	ACC	0.26	0.32	0.30	0.31	0.21		0.23	0.06	0.04	0.15	0.20		0.19	0.24	0.21	0.20	0.19					
	Rank	30	25	1	1	40	3	40	30	90	15	10		95	2	30	2	95				1	
Sire	EPD	16	-2.3	96	155	21	69	6	12.01	-2.10	21	14	-0.025	0.11	62	0.61	0.79	0.04	0.141	-0.139	144.92	109.61	253.93
	ACC	0.94	0.97	0.96	0.96	0.79		0.84	0.26	0.17	0.42	0.91	0.28	0.62	0.86	0.82	0.83	0.77	0.25	0.17			
	Rank																						
Dam	EPD	13	-1.2	78	123	23	62	7	2.95	1.01	15	13		-0.01	48	0.62	0.69	0.01				94.39	
	ACC	0.26	0.35	0.30	0.28	0.24		0.25	0.01	0.01	0.12	0.18		0.17	0.21	0.20	0.18	0.18					
	Rank																						

Balancer Non-Parent Percentile Ranking

	BW	WW	YW	REA	IMF	FAT
Adj	75	701	1238			
Ratio	99.0	108	106			



SIRE: TEHAMA UPWARD Y238 -- AMAN16760354

TEHAMA TAHOE B767 -- AMAN17817177

TEHAMA MARY BLACKBIRD Y684 -- AMAN16876258

CONNEALY LEGENDARY 644L -- AMAN18534952

DAM: VALS 88 C. LEGENDARY 033 OF 8104 -- AMGV1499374

VALS 88 UP TOWN 8104 OF 66 -- AMGV1445372

Really long & thick! Out of a 1st calf heifer by Connealy Legendary.

Herdbook Data for Registry No. - AMGV1561040

Bull

Listing No. - 6



Name: VALS 88 C. BLACK HAWK 043

Tattoo: VALS 043K

GV%: PC6.3

6.3% GV | 93.8% AN

Color: Black

HPS: Polled

Breeder: 9528 - THE 88 RANCH

DOB: 2/25/2022

		Expected Progeny Differences											Intake and Carcass						Index Values				
		Growth and Maternal																					
		CED	BW	WW	YW	MK	TM	CEM	HP	PG30	ST	DOC	DMI	YG	CW	REA	MB	FT	ADG	RFI	\$Cow	FPI	EPI
Subject Animal	EPD	15	-0.7	102	169	19	70	6	2.22	0.54	16	14		0.15	52	0.33	0.55	0.03				104.70	
	ACC	0.25	0.25	0.30	0.31	0.20		0.23	0.04	0.04	0.08	0.20		0.17	0.21	0.20	0.19	0.18					
	Rank	20	40	1	1	70	2	60	85	40	35	10		>95	4	90	10	>95				1	
Sire	EPD	13	-0.6	108	179	19	72	2	2.80	-0.28	18	16		0.25	66	0.27	0.59	0.04				108.35	
	ACC	0.88	0.95	0.94	0.93	0.69		0.77	0.19	0.17	0.14	0.79	0.58	0.79	0.74	0.75	0.67						
	Rank																						
Dam	EPD	17	-2.3	80	129	20	60	11	1.65	1.36	13	13		0.05	39	0.40	0.51	0.02				93.21	
	ACC	0.26	0.34	0.31	0.29	0.23		0.25	0.01	0.01	0.09	0.19	0.18	0.22	0.21	0.19	0.18						
	Rank																						

Balancer Non-Parent Percentile Ranking

	BW	WW	YW	REA	IMF	FAT
Adj	0	715	1319			
Ratio	*	110	113			



SIF  
DA

Sold

Herdbook Data for Registry No. - AMGV1560769

Bull

Listing No. - 7



Name: VALS 88 SPEEDWAY 70

Tattoo: VALS 70K

GV%: PB87.5

87.5% GV | 12.5% AN

Color: Black

HPS: Polled

Breeder: 9528 - THE 88 RANCH

DOB: 4/4/2022

		Expected Progeny Differences											Intake and Carcass						Index Values				
		Growth and Maternal																					
		CED	BW	WW	YW	MK	TM	CEM	HP	PG30	ST	DOC	DMI	YG	CW	REA	MB	FT	ADG	RFI	\$Cow	FPI	EPI
Subject Animal	EPD	16	-1.3	66	96	24	57	10	5.96	1.05	18	10		-0.21	23	0.53	0.32	-0.04				79.08	
	ACC	0.20	0.34	0.29	0.27	0.11		0.12	0.01	0.01	0.10	0.08		0.13	0.19	0.15	0.10	0.09					
	Rank	10	20	60	60	25	45	3	55	40	20	85		60	80	85	15	35					25
Sire	EPD	15	-1.1	63	92	23	54	9	4.93	1.26	17	12	0.030	-0.29	22	0.69	0.30	-0.05	-0.062	0.034	118.36	76.58	49.11
	ACC	0.48	0.61	0.56	0.51	0.16		0.24	0.01	0.01	0.30	0.14	0.04	0.30	0.39	0.37	0.31	0.27	0.04	0.04			
	Rank																						
Dam	EPD	14	-0.1	70	102	24	59	9	6.99	0.84	18	8		-0.12	24	0.37	0.34	-0.03				79.59	
	ACC	0.28	0.40	0.32	0.30	0.25		0.21	0.01	0.01	0.14	0.19		0.16	0.21	0.21	0.13	0.12					
	Rank																						

GV Non-Parent Percentile Ranking

	BW	WW	YW	REA	IMF	FAT
Adj	82	708	1167			
Ratio	94.0	103	101			



JKGF D108 ACCELERATE -- AMGV1354081

SIRE: VALS 88 SPEEDWAY 0129 -- AMGV1439848

DLW MS DAKOTA 0129X ET -- AMGV1168036

VALS 88 SAM 120 -- AMGV1305536

DAM: VALS 88 SAM 120 OF 508 -- AMGV1469461

VALS 88 GOOD NIGHT 508 OF 3507 -- AMGV1336398

The only purebred Gelbvieh that is a bit rugged, but really thick & deep!

Herdbook Data for Registry No. - AMGV1526084

Bull

Listing No. - 8



Name: VALS 88 C. LEGENDARY 94

Tattoo: VALS 94J

GV%: PC10.9375

10.938% GV | 88.281% AN | 0.781% SM

Color: Black

HPS: Polled

Breeder: 9528 - THE 88 RANCH

DOB: 3/2/2021

		Expected Progeny Differences											Intake and Carcass						Index Values				
		Growth and Maternal																					
		CED	BW	WW	YW	MK	TM	CEM	HP	PG30	ST	DOC	DMI	YG	CW	REA	MB	FT	ADG	RFI	\$Cow	FPI	EPI
Subject Animal	EPD	15	-2.2	82	128	18	59	9	2.55	0.42	12	11		-0.01	49	0.61	0.84	0.01				101.64	
	ACC	0.26	0.35	0.29	0.28	0.22		0.24	0.01	0.01	0.13	0.20		0.19	0.23	0.22	0.20	0.19					
	Rank	20	15	10	10	75	30	15	80	65	85	70		85	10	40	1	85					1
Sire	EPD	15	-3.1	90	138	20	65	7	1.63	0.11	10	13	0.00	61	0.82	1.06	0.02				112.97		
	ACC	0.92	0.96	0.95	0.94	0.77		0.82	0.07	0.06	0.28	0.86	0.61	0.84	0.79	0.81	0.74						
	Rank																						
Dam	EPD	17	-2.1	68	112	16	51	12	3.47	0.73	15	9		-0.01	34	0.35	0.61	0.00				88.31	
	ACC	0.25	0.39	0.32	0.30	0.29		0.25	0.01	0.01	0.11	0.19	0.19	0.23	0.22	0.20	0.18						
	Rank																						

Balancer Non-Parent Percentile Ranking

	BW	WW	YW	REA	IMF	FAT
Adj	80	644				
Ratio	98.0	100				



QUAKER HILL RAMPAGE 0A36 -- AMAN16925771

SIRE: CONNELY LEGENDARY 644L -- AMAN18534952

JAZZED OF CONANGA 4660 -- AMAN15475810

V A R LEGEND 5019 -- AMAN18066037

DAM: VALS 88 LEGEND 94 OF 920 -- AMGV1475226

DLW MS COWMAKER 920W OF 301 -- AMGV1118794

2 year old with numbers okay to use on heifers or cows.

Herdbook Data for Registry No. - AMGV1561048

Bull

Listing No. - 9



Name: VALS 88 SPEEDWAY 97

Tattoo: VALS 97K

GV%: BA57.1

57.1% GV | 43% AN

Color: Black

HPS: Polled

Breeder: 9528 - THE 88 RANCH

DOB: 3/21/2022

		Expected Progeny Differences											Intake and Carcass						Index Values				
		Growth and Maternal																					
		CED	BW	WW	YW	MK	TM	CEM	HP	PG30	ST	DOC	DMI	YG	CW	REA	MB	FT	ADG	RFI	\$Cow	FPI	EPI
Subject Animal	EPD	14	-1.0	77	117	25	63	9	4.68	1.71	15	12		-0.03	41	0.50	0.42	0.00				87.22	
	ACC	0.19	0.30	0.24	0.22	0.11			0.13	0.02	0.01	0.10	0.08	0.12	0.16	0.14	0.12	0.11					
	Rank	35	40	25	30	15	15	15	50	20	45	50		65	30	50	35	55				20	
Sire	EPD	15	-1.1	63	92	23	54	9	4.93	1.26	17	12	0.030	-0.29	22	0.69	0.30	-0.05	-0.062	0.034	118.36	76.58	49.11
	ACC	0.48	0.61	0.56	0.51	0.16			0.24	0.01	0.01	0.30	0.14	0.04	0.30	0.39	0.37	0.31	0.27	0.04	0.04		
	Rank																						
Dam	EPD	15	-2.2	81	125	26	66	10	4.43	2.15	12	12		0.23	54	0.22	0.53	0.04				92.79	
	ACC	0.27	0.38	0.26	0.26	0.26			0.27	0.08	0.06	0.15	0.20	0.18	0.22	0.21	0.20	0.19					
	Rank																						

Balancer Non-Parent Percentile Ranking

	BW	WW	YW	REA	IMF	FAT
Adj	84	688	1152			
Ratio	106.0	112	*			



JKGF D108 ACCELERATE -- AMGV1354081

SIRE: VALS 88 SPEEDWAY 0129 -- AMGV1439848

DLW MS DAKOTA 0129X ET -- AMGV1168036

LD CAPITALIST 316 -- AMAN17666102

DAM: VALS 88 316 CAPITALIST 97 OF 790 -- AMGV1475213

VALS 88 PAY WEIGHT 790 OF 106 -- AMGV1412400

This high percentage Gelbvieh Balancer bull has incredible numbers across his chart! He's long & thick! I love his beautiful dam out of Capitalist 316.

Herdbook Data for Registry No. - AMGV1526716

Bull

Listing No. - 10



Name: VALS 88 PATROL LIFELINE 0129

Tattoo: VALS 0129J

GV%: BA62.5

62.5% GV | 37.5% AN

Color: Black

HPS: Polled

Breeder: 9528 - THE 88 RANCH

DOB: 4/13/2021

		Expected Progeny Differences											Intake and Carcass						Index Values				
		Growth and Maternal																					
		CED	BW	WW	YW	MK	TM	CEM	HP	PG30	ST	DOC	DMI	YG	CW	REA	MB	FT	ADG	RFI	\$Cow	FPI	EPI
Subject Animal	EPD	13	-0.7	70	109	21	56	7	1.56	1.16	13	12		-0.16	38	0.72	0.26	-0.02				78.39	
	ACC	0.22	0.34	0.27	0.26	0.15			0.15	0.01	0.01	0.12	0.14	0.15	0.20	0.19	0.13	0.12					
	Rank	50	45	55	50	45	50	45	85	40	75	50		15	40	10	75	15				65	
Sire	EPD	14	-2.0	70	114	20	55	7	-0.96	0.37	8	11		-0.14	42	0.82	0.47	-0.01				85.77	
	ACC	0.54	0.61	0.56	0.53	0.24			0.30	0.06	0.05	0.30	0.39	0.36	0.47	0.43	0.39	0.37					
	Rank																						
Dam	EPD	11	1.0	66	99	22	55	5	4.08	1.95	17	14	0.053	-0.18	33	0.61	0.05	-0.04	-0.053	0.056	111.72	68.08	59.61
	ACC	0.36	0.48	0.40	0.39	0.37			0.28	0.20	0.18	0.20	0.23	0.08	0.22	0.30	0.30	0.20	0.16	0.07	0.06		
	Rank																						

Balancer Non-Parent Percentile Ranking

	BW	WW	YW	REA	IMF	FAT
Adj	86	750				
Ratio	102.0	105				



CONNELLY REGULATOR -- AMAN17893985

SIRE: VALS 88 REGULATOR 6022 -- AMGV1376568

VALS 88 MD 6022S BALANCER -- AMGV1002298

ACKG DAKOTA 3T -- AMGV1043000

DAM: DLW MS DAKOTA 0129X ET -- AMGV1168036

DCSF POST ROCK ARATA 76L2 ET -- AMGV761465

2 yr. old higher percent Gelbvieh to keep Balancers or gain heterosis on straight Angus.

Herdbook Data for Registry No. - AMGV1560759

Bull

Listing No. - 11



Name: VALS 88 RAWHIDE 219

Tattoo: VALS 219K

GV%: BA25

25% GV | 75% AN

Color: Black

HPS: Polled

Breeder: 9528 - THE 88 RANCH

DOB: 3/15/2022

		Expected Progeny Differences											Intake and Carcass						Index Values				
		Growth and Maternal																					
		CED	BW	WW	YW	MK	TM	CEM	HP	PG30	ST	DOC	DMI	YG	CW	REA	MB	FT	ADG	RFI	\$Cow	FPI	EPI
Subject Animal	EPD	13	1.1	93	147	26	72	6	1.25	1.02	14	13		0.09	72	0.71	0.64	0.02				99.41	
	ACC	0.20	0.34	0.29	0.30	0.16		0.16	0.01	0.01	0.07	0.15		0.14	0.20	0.17	0.15	0.13					
	Rank	50	85	1	2	10	1	65	95	40	60	25		95	1	15	5	90				1	
Sire	EPD	19	-2.7	99	153	24	73	8	0.46	1.08	12	16		0.21	87	0.75	1.01	0.05				117.30	
	ACC	0.87	0.93	0.91	0.88	0.38		0.49	0.01	0.01	0.09	0.71		0.52	0.72	0.66	0.65	0.56					
	Rank																						
Dam	EPD	11	1.9	67	101	27	61	6	2.05	0.95	17	9		-0.05	38	0.46	0.27	-0.01				73.06	
	ACC	0.18	0.44	0.31	0.29	0.31		0.20	0.01	0.01	0.15	0.07		0.11	0.16	0.14	0.08	0.07					
	Rank																						

Balancer Non-Parent Percentile Ranking

	BW	WW	YW	REA	IMF	FAT
Adj	100	768	1426			
Ratio	114.0	112	116			



SIRE: POSS RAWHIDE

**Sold**

DAM: VALS 88 CINCH 2192

Highest daily gain giving him the heaviest yearling weight in the pen. Big weaning weight. Larger frame, deep rib!

Herdbook Data for Registry No. - AMGV1560760

Bull

Listing No. - 12



Name: VALS 88 TAHOE 244

Tattoo: VALS 244K

GV%: BA25

25% GV | 75% AN

Color: Black

HPS: Polled

Breeder: 9528 - THE 88 RANCH

DOB: 3/4/2022

		Expected Progeny Differences											Intake and Carcass						Index Values				
		Growth and Maternal																					
		CED	BW	WW	YW	MK	TM	CEM	HP	PG30	ST	DOC	DMI	YG	CW	REA	MB	FT	ADG	RFI	\$Cow	FPI	EPI
Subject Animal	EPD	13	-1.2	73	115	16	53	5	4.80	-0.09	20	11		0.01	43	0.51	0.55	0.01				86.94	
	ACC	0.21	0.27	0.30	0.31	0.22		0.20	0.09	0.06	0.13	0.18		0.17	0.20	0.19	0.18	0.17					
	Rank	50	35	40	35	90	70	80	50	70	2	75		80	20	50	15	75				20	
Sire	EPD	16	-2.3	96	155	21	69	6	12.01	-2.10	21	14	-0.025	0.11	62	0.61	0.79	0.04	0.141	-0.139	144.92	109.61	253.93
	ACC	0.94	0.97	0.96	0.96	0.79		0.84	0.26	0.17	0.42	0.91	0.28	0.62	0.86	0.82	0.83	0.77	0.25	0.17			
	Rank																						
Dam	EPD	9	0.4	56	83	12	40	3	-2.42	1.91	19	9		-0.10	23	0.42	0.31	-0.01				67.27	
	ACC	0.25	0.42	0.32	0.30	0.32		0.22	0.14	0.07	0.15	0.12		0.15	0.18	0.18	0.15	0.12					
	Rank																						

Balancer Non-Parent Percentile Ranking

	BW	WW	YW	REA	IMF	FAT
Adj	0	609	1136			
Ratio	*	89	93			



SIRE: TEHAMA UPWARD Y238 -- AMAN16760354

TEHAMA TAHOE B767 -- AMAN17817177

TEHAMA MARY BLACKBIRD Y684 -- AMAN16876258

CTR INDUSTRY 800 -- AMAN16528233

DAM: DLW MS INDUSTRY 244Z OF 5123 -- AMGV1223153

DLW MS HIGHLIGHT 5123R ET -- AMGV954999

Tahoe son from a moderate framed cow we purchased from Warner Genetics. She was too protective of her calf for us to get a birthweight.

Herdbook Data for Registry No. - AMGV1560762

Bull

Listing No. - 13



Name: VALS 88 RAWHIDE 302

Tattoo: VALS 302K

GV%: BA35.9

35.9% GV | 63.3% AN | 0.8% SM

Color: Black

HPS: Polled

Breeder: 9528 - THE 88 RANCH

DOB: 3/8/2022

		Expected Progeny Differences											Intake and Carcass						Index Values				
		Growth and Maternal																					
		CED	BW	WW	YW	MK	TM	CEM	HP	PG30	ST	DOC	DMI	YG	CW	REA	MB	FT	ADG	RFI	\$Cow	FPI	EPI
Subject Animal	EPD	20	-4.1	76	117	24	62	10	3.75	0.78	15	13		0.03	52	0.57	0.58	0.01				95.62	
	ACC	0.23	0.35	0.31	0.32	0.17		0.17	0.03	0.02	0.07	0.19		0.17	0.22	0.20	0.18	0.15					
	Rank	1	4	30	30	20	15	10	65	40	45	25		85	10	35	10	75				3	
Sire	EPD	19	-2.7	99	153	24	73	8	0.46	1.08	12	16		0.21	87	0.75	1.01	0.05				117.30	
	ACC	0.87	0.93	0.91	0.88	0.38		0.49	0.01	0.01	0.09	0.71		0.52	0.72	0.66	0.65	0.56					
	Rank																						
Dam	EPD	18	-3.2	66	96	24	56	11	7.05	0.48	19	10		-0.15	23	0.48	0.14	-0.02				77.05	
	ACC	0.30	0.46	0.37	0.35	0.34		0.25	0.11	0.10	0.22	0.23		0.20	0.26	0.25	0.21	0.17					
	Rank																						

Balancer Non-Parent Percentile Ranking

	BW	WW	YW	REA	IMF	FAT
Adj	75	651	1185			
Ratio	85.0	95	97			



POSS MAVERICK -- AMAN18962396

SIRE: POSS RAWHIDE -- AMAN19416968

POSS BLUEBLOOD 6502 -- AMAN18631711

JKGF 43U -- AMGV1063542

DAM: VALS 88 MS 43U 302 OF DLW920 -- AMGV1266277

DLW MS COWMAKER 920W OF 301 -- AMGV1118794

Definite sleep all night heifer bull! Terrific numbers & eye appeal!

Herdbook Data for Registry No. - AMGV1560763

Bull

Listing No. - 14



Name: VALS 88 RAWHIDE 306

Tattoo: VALS 306K

GV%: BA26.6

26.6% GV | 73.4% AN

Color: Black

HPS: Polled

Breeder: 9528 - THE 88 RANCH

DOB: 3/8/2022

		Expected Progeny Differences											Intake and Carcass						Index Values				
		Growth and Maternal																					
		CED	BW	WW	YW	MK	TM	CEM	HP	PG30	ST	DOC	DMI	YG	CW	REA	MB	FT	ADG	RFI	\$Cow	FPI	EPI
Subject Animal	EPD	17	-2.4	76	118	21	59	9	1.84	0.44	14	13		0.10	60	0.50	0.72	0.02				95.66	
	ACC	0.22	0.34	0.31	0.31	0.17		0.17	0.03	0.03	0.07	0.17		0.16	0.21	0.19	0.16	0.14					
	Rank	10	15	30	30	45	30	15	85	70	60	25		>95	2	50	2	90				3	
Sire	EPD	19	-2.7	99	153	24	73	8	0.46	1.08	12	16		0.21	87	0.75	1.01	0.05				117.30	
	ACC	0.87	0.93	0.91	0.88	0.38		0.49	0.01	0.01	0.09	0.71		0.52	0.72	0.66	0.65	0.56					
	Rank																						
Dam	EPD	15	-2.0	65	99	18	50	9	3.21	-0.20	17	9		-0.03	40	0.37	0.42	-0.01				80.64	
	ACC	0.26	0.43	0.33	0.32	0.32		0.25	0.12	0.11	0.19	0.15		0.14	0.19	0.17	0.14	0.13					
	Rank																						

Balancer Non-Parent Percentile Ranking

	BW	WW	YW	REA	IMF	FAT
Adj	86	607	1146			
Ratio	98.0	89	94			



POSS MAVERICK -- AMAN18962396

SIRE: POSS RAWHIDE -- AMAN19416968

POSS BLUEBLOOD 6502 -- AMAN18631711

VRT LAZY TV TANK X315 -- AMGV1162369

DAM: VALS 88 TV TANK 306 OF 106 -- AMGV1266369

VALS 88 CINCH 106Y -- AMGV1201849

Candidate to use on heifers. His sire, Rawhide, was in short supply last year due to high demand semen sales. He really keeps every category balanced.



Herdbook Data for Registry No. - AMGV1561070

Bull

Listing No. - 15



Name: VALS 88 CC 2418

Tattoo: VALS 418K

GV%: BA26.6

26.6% GV | 73.4% AN

Color: Black

HPS: Polled

Breeder: 9528 - THE 88 RANCH

DOB: 3/30/2022

		Expected Progeny Differences											Intake and Carcass						Index Values						
		Growth and Maternal											DMI	YG	CW	REA	MB	FT	ADG	RFI	\$Cow	FPI	EPI		
		CED	BW	WW	YW	MK	TM	CEM	HP	PG30	ST	DOC													
Subject Animal	EPD	10	1.7	83	128	18	60	5	2.78	0.93	11	13		0.01	51	0.56	0.44	0.01						86.15	
	ACC	0.17	0.31	0.26	0.26	0.12		0.12	0.01	0.01	0.11	0.10		0.12	0.17	0.15	0.09	0.09							
	Rank	85	95	10	15	75	25	80	75	40	95	25		80	10	35	30	75							25
Sire	EPD	10	0.9	88	141	14	58	4	4.48	1.35	9	16		0.00	58	0.73	0.53	0.01						92.08	
	ACC	0.52	0.61	0.56	0.53	0.21		0.30	0.01	0.01	0.31	0.39		0.34	0.43	0.41	0.36	0.35							
Dam	EPD	11	0.8	62	91	22	53	7	1.09	0.51	13	10		0.02	35	0.26	0.35	0.00						72.60	
	ACC	0.18	0.39	0.26	0.25	0.28		0.19	0.01	0.01	0.15	0.07		0.09	0.14	0.12	0.06	0.06							

Balancer Non-Parent Percentile Ranking

	BW	WW	YW	REA	IMF	FAT
Adj	92	788	1330			
Ratio	114.0	116	104			



CONNEALY CONFIDENCE PLUS -- AMAN17585576

SIRE: VALS 88 CONFIDENCE PLUS 602 -- AMGV1439804

VALS 88 CASH 602 OF 478 -- AMGV1372213

VRT LAZY TV CINCHA P546 -- AMGV903059

DAM: VALS 88 CINCHA 418 OF 085 -- AMGV1305268

DLW MS CANADA 085X -- AMGV1168021

Highest Adjusted 205 day weaning weight in the pen! Will catch your eye in the pen with his big hip, depth of rib, and length.

Herdbook Data for Registry No. - AMGV1560765

Bull

Listing No. - 16



Name: VALS 88 TAHOE 455

Tattoo: VALS 455K

GV%: PC12.5

12.5% GV | 87.5% AN

Color: Black

HPS: Polled

Breeder: 9528 - THE 88 RANCH

DOB: 3/9/2022

		Expected Progeny Differences											Intake and Carcass						Index Values						
		Growth and Maternal											DMI	YG	CW	REA	MB	FT	ADG	RFI	\$Cow	FPI	EPI		
		CED	BW	WW	YW	MK	TM	CEM	HP	PG30	ST	DOC													
Subject Animal	EPD	12	1.0	83	129	16	57	6	7.64	0.12	19	12		0.09	44	0.43	0.55	0.03						89.35	
	ACC	0.23	0.34	0.31	0.30	0.22		0.22	0.06	0.04	0.16	0.20		0.19	0.23	0.22	0.19	0.19							
	Rank	60	80	10	10	90	45	60	20	65	5	50		>95	15	75	10	>95							10
Sire	EPD	16	-2.3	96	155	21	69	6	12.01	-2.10	21	14	-0.025	0.11	62	0.61	0.79	0.04	0.141	-0.139			144.92	109.61	253.93
	ACC	0.94	0.97	0.96	0.96	0.79		0.84	0.26	0.17	0.42	0.91	0.28	0.62	0.86	0.82	0.83	0.77	0.25	0.17					
Dam	EPD	10	1.9	66	97	11	44	7	3.27	2.34	16	11		0.07	25	0.24	0.31	0.03						70.81	
	ACC	0.26	0.43	0.33	0.31	0.34		0.26	0.01	0.01	0.23	0.20		0.19	0.24	0.23	0.20	0.19							

Balancer Non-Parent Percentile Ranking

	BW	WW	YW	REA	IMF	FAT
Adj	100	642	1152			
Ratio	115.0	94	99			



TEHAMA UPWARD Y238 -- AMAN16760354

SIRE: TEHAMA TAHOE B767 -- AMAN17817177

TEHAMA MARY BLACKBIRD Y684 -- AMAN16876258

KESSLERS FRONTMAN R001 -- AMAN15180461

DAM: VALS 88 KESS FRONTMAN 455 -- AMGV1305541

VALS 88 EXT NIK 125Y ET -- AMGV1202412



Herdbook Data for Registry No. - AMGV1560748

Bull

Listing No. - 19



Name: VALS 88 TRUE NORTH 0515

Tattoo: VALS 0515K

GV%: PC9.8

9.8% GV | 77.8% AN | 12.5% XX

Color: Black

HPS: Polled

Breeder: 9528 - THE 88 RANCH

DOB: 2/21/2022

		Expected Progeny Differences											Intake and Carcass						Index Values				
		Growth and Maternal																					
		CED	BW	WW	YW	MK	TM	CEM	HP	PG30	ST	DOC	DMI	YG	CW	REA	MB	FT	ADG	RFI	\$Cow	FPI	EPI
Subject Animal	EPD	15	-1.9	75	122	19	56	9	6.19	1.75	15	13		0.10	36	0.32	0.70	0.03				93.78	
	ACC	0.26	0.33	0.31	0.32	0.15		0.20	0.02	0.01	0.10	0.19		0.18	0.23	0.21	0.18	0.17					
	Rank	20	20	30	15	70	50	15	40	20	50	25		>95	40	90	2	>95				3	
Sire	EPD	20	-4.4	73	128	22	59	10	6.68	0.22	14	14		0.12	26	0.31	0.87	0.06				101.81	
	ACC	0.89	0.94	0.92	0.91	0.43		0.55	0.08	0.01	0.15	0.82		0.56	0.77	0.72	0.70	0.62					
	Rank																						
Dam	EPD	12	-0.4	80	121	15	55	8	5.71	3.27	15	12		0.07	46	0.35	0.54	0.01				88.84	
	ACC	0.21	0.35	0.29	0.27	0.17		0.18	0.01	0.01	0.10	0.14		0.14	0.19	0.17	0.14	0.13					
	Rank																						

Balancer Non-Parent Percentile Ranking

	BW	WW	YW	REA	IMF	FAT
Adj	79	615	1091			
Ratio	104.0	95	93			



S A V RAINFALL 6846 -- AMAN18578963

SIRE: SQUARE B TRUE NORTH 8052 -- AMAN19405246

ELBANNA OF CONANGA 1209 -- AMAN17029025

VALS 88 BANKROLL -- AMGV1386621

DAM: VALS 88 BANKROLL 0515 OF 515 -- AMGV1499365

VALS 88 CAPITAL 515 OF 204 -- AMGV1336339

True North is a calving ease Rainfall son we used A.I. on heifers with excellent results. This Angus bull is really long out of a beautiful heifer. Should work on heifers.

Herdbook Data for Registry No. - AMGV1525811

Bull

Listing No. - 20



Name: VALS 88 LEGEND 789

Tattoo: VALS 789J

GV%: PC20.3

20.3% GV | 79.7% AN

Color: Black

HPS: Polled

Breeder: 9528 - THE 88 RANCH

DOB: 2/27/2021

		Expected Progeny Differences											Intake and Carcass						Index Values				
		Growth and Maternal																					
		CED	BW	WW	YW	MK	TM	CEM	HP	PG30	ST	DOC	DMI	YG	CW	REA	MB	FT	ADG	RFI	\$Cow	FPI	EPI
Subject Animal	EPD	15	-2.4	75	123	17	55	11	3.03	2.15	16	13		0.05	46	0.39	0.53	0.01				89.87	
	ACC	0.23	0.35	0.29	0.27	0.21		0.21	0.01	0.01	0.10	0.19		0.17	0.21	0.21	0.17	0.16					
	Rank	20	15	30	15	85	55	2	80	20	35	25		95	10	80	10	85				10	
Sire	EPD	13	-0.5	88	155	15	59	12	3.92	1.26	15	13	0.048	0.06	60	0.52	0.83	0.01	0.111	-0.066	105.33	103.07	226.03
	ACC	0.89	0.96	0.95	0.94	0.81		0.84	0.11	0.09	0.25	0.82	0.11	0.60	0.82	0.77	0.78	0.71	0.11	0.09			
	Rank																						
Dam	EPD	15	-2.8	69	102	20	54	9	2.13	3.03	18	13		0.00	37	0.33	0.28	0.00				80.13	
	ACC	0.22	0.38	0.28	0.26	0.23		0.19	0.01	0.01	0.12	0.14		0.14	0.18	0.17	0.12	0.12					
	Rank																						

Balancer Non-Parent Percentile Ranking

	BW	WW	YW	REA	IMF	FAT
Adj	78	638				
Ratio	91.0	95				



V A R DISCOVERY 2240 -- AMAN17262835

SIRE: V A R LEGEND 5019 -- AMAN18066037

PF CC&7 HENRIETTA PRIDE 1044 -- AMAN16924432

VALS 88 FINAL SAY 1488 -- AMGV1305621

DAM: VALS 88 029 FINAL SAY 789 OF 107 -- AMGV1412500

VALS 88 ALLIANCE I87 107Y -- AMGV1201826

2 year old heifer bull candidate with nice numbers

Herdbook Data for Registry No. - AMGV1560962

Bull

Listing No. - 21



Name: VALS 88 LEGEND 958

Tattoo: VALS 958K

GV%: BA31.3

31.3% GV | 68.8% AN

Color: Black

HPS: Polled

Breeder: 9528 - THE 88 RANCH

DOB: 3/5/2022

		Expected Progeny Differences											Intake and Carcass						Index Values						
		Growth and Maternal																							
		CED	BW	WW	YW	MK	TM	CEM	HP	PG30	ST	DOC	DMI	YG	CW	REA	MB	FT	ADG	RFI	\$Cow	FPI	EPI		
Subject Animal	EPD	14	-0.8	75	126	20	57	9	1.93	0.41	15	11		-0.01	51	0.52	0.53	-0.01					88.41		
	ACC	0.21	0.34	0.30	0.31	0.22		0.20	0.03	0.02	0.12	0.16		0.16	0.21	0.18	0.16	0.15							
	Rank	35	45	30	15	55	45	15	85	70	45	75		75	10	45	15	35					15		
Sire	EPD	13	-0.5	88	155	15	59	12	3.92	1.26	15	13	0.048	0.06	60	0.52	0.83	0.01	0.111	-0.066			105.33	103.07	226.03
	ACC	0.89	0.96	0.95	0.94	0.81		0.84	0.11	0.09	0.25	0.82		0.11	0.60	0.82	0.77	0.78	0.71	0.11	0.09				
	Rank																								
Dam	EPD	13	-0.2	57	83	24	52	6	-0.06	-0.43	14	10		-0.09	38	0.47	0.24	-0.02						69.03	
	ACC	0.20	0.41	0.32	0.29	0.32		0.20	0.01	0.01	0.17	0.09		0.10	0.13	0.12	0.08	0.08							
	Rank																								

Balancer Non-Parent Percentile Ranking

	BW	WW	YW	REA	IMF	FAT
Adj	84	697	1291			
Ratio	98.0	102	105			



V A R DISCOVERY 2240 -- AMAN17262835

SIRE: V A R LEGEND 5019 -- AMAN18066037

PF CC&7 HENRIETTA PRIDE 1044 -- AMAN16924432

VRT LAZY TV CINCHA P546 -- AMGV903059

DAM: VALS 88 CINCH 958W -- AMGV1130515

VALS 88 VISION 958J IONE -- AMGV671211

Larger framed bull out of the oldest cow on the ranch. She'll have her 12th calf this spring. She is a red carrier which means this bull could also be a red carrier.

Herdbook Data for Registry No. - AMGV1561056

Bull

Listing No. - 22



Name: VALS 88 SPEEDWAY 992

Tattoo: VALS 992K

GV%: BA59.4

59.4% GV | 40.6% AN

Color: Black

HPS: Polled

Breeder: 9528 - THE 88 RANCH

DOB: 4/12/2022

		Expected Progeny Differences											Intake and Carcass						Index Values						
		Growth and Maternal																							
		CED	BW	WW	YW	MK	TM	CEM	HP	PG30	ST	DOC	DMI	YG	CW	REA	MB	FT	ADG	RFI	\$Cow	FPI	EPI		
Subject Animal	EPD	16	-1.9	78	122	25	64	9	6.47	2.34	17	13		-0.05	40	0.48	0.48	-0.01					91.02		
	ACC	0.19	0.30	0.27	0.27	0.11		0.13	0.01	0.01	0.11	0.08		0.13	0.17	0.15	0.12	0.11							
	Rank	15	25	20	20	15	10	15	40	20	20	25		60	30	55	20	35					10		
Sire	EPD	15	-1.1	63	92	23	54	9	4.93	1.26	17	12	0.030	-0.29	22	0.69	0.30	-0.05	-0.062	0.034			118.36	76.58	49.11
	ACC	0.48	0.61	0.56	0.51	0.16		0.24	0.01	0.01	0.30	0.14		0.04	0.30	0.39	0.37	0.31	0.27	0.04	0.04				
	Rank																								
Dam	EPD	15	-1.4	87	140	27	70	8	8.00	3.42	16	13		0.19	48	0.17	0.66	0.03						99.48	
	ACC	0.27	0.37	0.31	0.29	0.28		0.27	0.01	0.01	0.19	0.20		0.19	0.23	0.22	0.19	0.20							
	Rank																								

Balancer Non-Parent Percentile Ranking

	BW	WW	YW	REA	IMF	FAT
Adj	70	758	1313			
Ratio	89.0	110	108			



SIRE

DAM

**Sold**

Herdbook Data for Registry No. - AMGV1560758

Bull

Listing No. - 23



Name: VALS 88 PLUS ONE 1709

Tattoo: VALS 1709K

GV%: BA25

25% GV | 75% AN

Color: Black

HPS: Polled

Breeder: 9528 - THE 88 RANCH

DOB: 3/10/2022

		Expected Progeny Differences											Intake and Carcass						Index Values				
		Growth and Maternal																					
		CED	BW	WW	YW	MK	TM	CEM	HP	PG30	ST	DOC	DMI	YG	CW	REA	MB	FT	ADG	RFI	\$Cow	FPI	EPI
Subject Animal	EPD	14	-0.4	70	111	19	54	6	2.18	1.90	15	11		0.01	31	0.42	0.52	0.02				84.33	
	ACC	0.24	0.35	0.31	0.32	0.20		0.20	0.01	0.01	0.18	0.20		0.19	0.24	0.22	0.20	0.19					
	Rank	35	55	55	45	65	65	65	85	20	45	75		80	65	65	15	90				30	
Sire	EPD	18	-3.3	70	124	15	49	6	0.66	2.42	13	14		0.04	43	0.58	0.86	0.03				97.38	
	ACC	0.92	0.97	0.95	0.95	0.51		0.64	0.01	0.01	0.15	0.84		0.61	0.83	0.79	0.80	0.73					
	Rank																						
Dam	EPD	11	2.2	70	101	24	59	7	3.69	1.38	17	8		-0.01	21	0.26	0.18	0.01				71.39	
	ACC	0.27	0.45	0.35	0.33	0.35		0.27	0.01	0.01	0.24	0.21		0.19	0.23	0.23	0.21	0.19					
	Rank																						

Balancer Non-Parent Percentile Ranking

	BW	WW	YW	REA	IMF	FAT
Adj	90	711	1175			
Ratio	105.0	104	96			



CONNEALY CONFIDENCE PLUS -- AMAN17585576

SIRE: E&E PLUS ONE -- AMAN19196960

E&E LADY 1023 PRECISION 936 -- AMAN16454439

S A V FINAL ANSWER 0035 -- AMAN13592905

DAM: VALS 88 FINAL ANSWER 1709Y -- AMGV1201921

VALS 88 WONDERFUL 5709R -- AMGV949939

Mother is a beautiful Final Answer daughter. Very moderate framed, thick, easy fleshing.

Herdbook Data for Registry No. - AMGV1560761

Bull

Listing No. - 24



Name: VALS 88 RAWHIDE 2842

Tattoo: VALS 2842K

GV%: PC18.8

18.8% GV | 81.3% AN

Color: Black

HPS: Polled

Breeder: 9528 - THE 88 RANCH

DOB: 3/8/2022

		Expected Progeny Differences											Intake and Carcass						Index Values				
		Growth and Maternal																					
		CED	BW	WW	YW	MK	TM	CEM	HP	PG30	ST	DOC	DMI	YG	CW	REA	MB	FT	ADG	RFI	\$Cow	FPI	EPI
Subject Animal	EPD	16	-1.3	77	117	22	61	8	1.15	1.22	15	14		0.13	57	0.41	0.63	0.03				92.17	
	ACC	0.21	0.35	0.30	0.30	0.17		0.16	0.01	0.01	0.06	0.16		0.15	0.20	0.18	0.15	0.14					
	Rank	15	30	20	25	40	20	25	95	40	50	10		>95	2	80	4	>95				5	
Sire	EPD	19	-2.7	99	153	24	73	8	0.46	1.08	12	16		0.21	87	0.75	1.01	0.05				117.30	
	ACC	0.87	0.93	0.91	0.88	0.38		0.49	0.01	0.01	0.09	0.71		0.52	0.72	0.66	0.65	0.56					
	Rank																						
Dam	EPD	13	0.7	69	102	20	55	8	1.83	1.37	19	12		0.05	36	0.21	0.25	0.00				74.33	
	ACC	0.22	0.44	0.32	0.29	0.32		0.22	0.01	0.01	0.18	0.11		0.13	0.17	0.16	0.11	0.10					
	Rank																						

Balancer Non-Parent Percentile Ranking

	BW	WW	YW	REA	IMF	FAT
Adj	86	621	1142			
Ratio	99.0	91	93			



POSS MAVERICK -- AMAN18962396

SIRE: POSS RAWHIDE -- AMAN19416968

POSS BLUEBLOOD 6502 -- AMAN18631711

VRT LAZY TV CINCHA P546 -- AMGV903059

DAM: VALS 88 CINCH 2842 842 -- AMGV1235566

VALS 88 ALLI 842U BALANCER -- AMGV1082219

His numbers on his chart are above average in nearly every category. Deep ribbed like his A.I. sire, Poss Rawhide.

Herdbook Data for Registry No. - AMGV1526079

Bull

Listing No. - 25



Name: VALS 88 PLUS ONE 6070

Tattoo: VALS 6070J

GV%: PC12.5

12.5% GV | 87.5% AN

Color: Black

HPS: Polled

Breeder: 9528 - THE 88 RANCH

DOB: 2/26/2021

		Expected Progeny Differences											Intake and Carcass						Index Values				
		Growth and Maternal																					
		CED	BW	WW	YW	MK	TM	CEM	HP	PG30	ST	DOC	DMI	YG	CW	REA	MB	FT	ADG	RFI	\$Cow	FPI	EPI
Subject Animal	EPD	15	-1.5	73	122	13	49	7	2.79	2.25	15	13		0.06	35	0.36	0.66	0.03				90.84	
	ACC	0.24	0.34	0.29	0.28	0.19		0.20	0.01	0.01	0.11	0.20		0.18	0.22	0.21	0.19	0.18					
	Rank	20	25	35	15	>95	85	40	80	20	50	25		95	40	85	3	>95				10	
Sire	EPD	18	-3.3	70	124	15	49	6	0.66	2.42	13	14		0.04	43	0.58	0.86	0.03				97.38	
	ACC	0.92	0.97	0.95	0.95	0.51		0.64	0.01	0.01	0.15	0.84		0.61	0.83	0.79	0.80	0.73					
	Rank																						
Dam	EPD	14	-1.0	75	116	11	48	9	4.92	2.07	17	12		0.08	28	0.15	0.47	0.02				85.15	
	ACC	0.24	0.38	0.30	0.27	0.28		0.23	0.01	0.01	0.24	0.17		0.17	0.21	0.19	0.17	0.16					
	Rank																						

Balancer Non-Parent Percentile Ranking

	BW	WW	YW	REA	IMF	FAT
Adj	90	666				
Ratio	104.0	98				



CONNEALY CONFIDENCE PLUS -- AMAN17585576

SIRE: E&E PLUS ONE -- AMAN19196960

E&E LADY 1023 PRECISION 936 -- AMAN16454439

S A V FINAL ANSWER 0035 -- AMAN13592905

DAM: VALS 88 FINAL ANSWER 607 OF 407 -- AMGV1372460

VALS 88 T26 407 -- AMGV1305267

2 year old, moderate frame, well defined bull

Herdbook Data for Registry No. - AMGV1560771

Bull

Listing No. - 26



Name: VALS 88 RAWHIDE 8106

Tattoo: VALS 8106K

GV%: PC14.1

14.1% GV | 85.9% AN

Color: Black

HPS: Polled

Breeder: 9528 - THE 88 RANCH

DOB: 3/2/2022

		Expected Progeny Differences											Intake and Carcass						Index Values				
		Growth and Maternal																					
		CED	BW	WW	YW	MK	TM	CEM	HP	PG30	ST	DOC	DMI	YG	CW	REA	MB	FT	ADG	RFI	\$Cow	FPI	EPI
Subject Animal	EPD	16	-1.1	90	138	23	68	7	2.15	0.93	14	13		0.13	63	0.47	0.66	0.02				100.98	
	ACC	0.21	0.34	0.30	0.30	0.16		0.17	0.02	0.01	0.08	0.18		0.17	0.22	0.20	0.17	0.15					
	Rank	15	35	2	3	30	3	40	85	40	65	25		>95	1	70	3	95				1	
Sire	EPD	19	-2.7	99	153	24	73	8	0.46	1.08	12	16		0.21	87	0.75	1.01	0.05				117.30	
	ACC	0.87	0.93	0.91	0.88	0.38		0.49	0.01	0.01	0.09	0.71		0.52	0.72	0.66	0.65	0.56					
	Rank																						
Dam	EPD	15	-0.8	75	117	21	58	7	3.84	0.78	17	11		0.05	38	0.15	0.31	-0.01				82.40	
	ACC	0.23	0.39	0.30	0.28	0.29		0.24	0.08	0.05	0.16	0.17		0.17	0.21	0.19	0.17	0.17					
	Rank																						

Balancer Non-Parent Percentile Ranking

	BW	WW	YW	REA	IMF	FAT
Adj	90	749	1246			
Ratio	105.0	109	102			



ROSS MAVERICK -- AMAN18062206

SIRE

DAM

Stand full b

Sold

Herdbook Data for Registry No. - AMGV1561065

Bull

Listing No. - 27



Name: VALS 88 CC1 8112

Tattoo: VALS 8112K

GV%: BA36.7

36.7% GV | 62.9% AN | 0.4% SM

Color: Black

HPS: Polled

Breeder: 9528 - THE 88 RANCH

DOB: 4/15/2022

		Expected Progeny Differences											Intake and Carcass						Index Values					
		Growth and Maternal											DMI	YG	CW	REA	MB	FT	ADG	RFI	\$Cow	FPI	EPI	
		CED	BW	WW	YW	MK	TM	CEM	HP	PG30	ST	DOC												
Subject Animal	EPD	16	-1.8	72	113	21	57	8	6.17	2.33	16	13		-0.04	41	0.56	0.47	0.00					86.73	
	ACC	0.18	0.30	0.26	0.26	0.11		0.12	0.01	0.01	0.10	0.11		0.12	0.17	0.15	0.11	0.10						
	Rank	15	25	45	40	45	45	30	40	20	30	25		60	30	35	25	55					20	
Sire	EPD	18	-1.7	78	122	24	63	9	7.07	2.31	12	13		-0.14	44	0.83	0.65	-0.01					96.26	
	ACC	0.51	0.57	0.52	0.50	0.23		0.30	0.01	0.01	0.30	0.41		0.35	0.43	0.43	0.39	0.36						
	Rank																							
Dam	EPD	12	-0.9	71	110	18	53	7	5.26	2.35	20	14		0.07	40	0.30	0.30	0.01					78.59	
	ACC	0.19	0.36	0.28	0.26	0.20		0.14	0.01	0.01	0.13	0.11		0.13	0.17	0.16	0.11	0.10						
	Rank																							

Balancer Non-Parent Percentile Ranking

	BW	WW	YW	REA	IMF	FAT
Adj	76	670	1178			
Ratio	95.0	97	97			



CONNEALY CONFIDENCE PLUS -- AMAN17585576

SIRE: VALS 88 CONFIDENTIAL 601 -- AMGV1439792

VALS 88 SAM 601 OF 920 -- AMGV1372206

VALS 88 CAPITAL UPTOWN 122 -- AMGV1336310

DAM: VALS 88 UPTOWN 8112 OF I-87 -- AMGV1445354

VALS 88 CINCH 1-87Y -- AMGV1201894

Lots of eye appeal in this bull that has one of the best set of numbers in every category!

Herdbook Data for Registry No. - AMGV1560772

Bull

Listing No. - 28



Name: VALS 88 CONNEALY LEGENDARY 8126 Tattoo: VALS 8126K

GV%: PC6.3

6.3% GV | 93.8% AN

Color: Black

HPS: Polled

Breeder: 9528 - THE 88 RANCH

DOB: 3/14/2022

		Expected Progeny Differences											Intake and Carcass						Index Values					
		Growth and Maternal											DMI	YG	CW	REA	MB	FT	ADG	RFI	\$Cow	FPI	EPI	
		CED	BW	WW	YW	MK	TM	CEM	HP	PG30	ST	DOC												
Subject Animal	EPD	15	-2.2	83	129	19	60	6	3.50	1.68	14	13		0.02	51	0.69	0.86	0.03					102.69	
	ACC	0.25	0.35	0.31	0.32	0.22		0.22	0.02	0.01	0.13	0.21		0.19	0.25	0.22	0.21	0.19						
	Rank	20	15	10	10	70	25	60	65	20	65	25		90	5	25	1	>95					1	
Sire	EPD	15	-3.1	90	138	20	65	7	1.63	0.11	10	13		0.00	61	0.82	1.06	0.02					112.97	
	ACC	0.92	0.96	0.95	0.94	0.77		0.82	0.07	0.06	0.28	0.86		0.61	0.84	0.79	0.81	0.74						
	Rank																							
Dam	EPD	15	-1.5	74	121	18	55	6	5.37	3.24	18	13		0.05	42	0.54	0.66	0.03					91.40	
	ACC	0.28	0.39	0.32	0.30	0.30		0.27	0.01	0.01	0.17	0.21		0.20	0.24	0.23	0.21	0.20						
	Rank																							

Balancer Non-Parent Percentile Ranking

	BW	WW	YW	REA	IMF	FAT
Adj	84	719	1205			
Ratio	99.0	105	98			



QUAKER HILL RAMPAGE 0A36 -- AMAN16925771

SIRE: CONNEALY LEGENDARY 644L -- AMAN18534952

JAZZED OF CONANGA 4660 -- AMAN15475810

CONNEALY CONFIDENCE PLUS -- AMAN17585576

DAM: VALS 88 CONFIDENCE PLUS 8126 -- AMGV1445352

VALS 88 CAPITALIST 666 OF 366 -- AMGV1372430

Another easy stand out since birth. Well defined muscle with length of body. Purebred Angus.

Herdbook Data for Registry No. - AMGV1561071

Bull

Listing No. - 29



Name: VALS 88 RAWHIDE 8133

Tattoo: VALS 8133K

GV%: PC12.5

12.5% GV | 87.5% AN

Color: Black

HPS: Polled

Breeder: 9528 - THE 88 RANCH

DOB: 3/8/2022

		Expected Progeny Differences											Intake and Carcass						Index Values				
		Growth and Maternal																					
		CED	BW	WW	YW	MK	TM	CEM	HP	PG30	ST	DOC	DMI	YG	CW	REA	MB	FT	ADG	RFI	\$Cow	FPI	EPI
Subject Animal	EPD	13	-0.4	88	134	22	66	6	1.75	1.23	13	14		0.12	63	0.61	0.62	0.04				96.58	
	ACC	0.21	0.31	0.28	0.28	0.15		0.16	0.02	0.01	0.05	0.17		0.16	0.20	0.19	0.17	0.15					
	Rank	45	50	3	5	40	5	60	85	40	75	10		>95	1	40	4	>95					2
Sire	EPD	19	-2.7	99	153	24	73	8	0.46	1.08	12	16		0.21	87	0.75	1.01	0.05				117.30	
	ACC	0.87	0.93	0.91	0.88	0.38		0.49	0.01	0.01	0.09	0.71		0.52	0.72	0.66	0.65	0.56					
	Rank																						
Dam	EPD	10	0.1	74	115	21	58	5	3.05	1.38	14	12		0.02	42	0.51	0.23	0.02				77.48	
	ACC	0.21	0.35	0.25	0.24	0.24		0.20	0.08	0.06	0.19	0.16		0.15	0.19	0.17	0.17	0.15					
	Rank																						

Balancer Non-Parent Percentile Ranking

	BW	WW	YW	REA	IMF	FAT
Adj	90	708	1233			
Ratio	113.0	104	97			



POSS MAVERICK -- AMAN18962396

SIRE: POSS RAWHIDE -- AMAN19416968

POSS BLUEBLOOD 6502 -- AMAN18631711

S A V RENOWN 3439 -- AMAN17633839

DAM: VALS 88 RENOWN 8133 OF 3733 -- AMGV1445337

VALS 88 CINCHA 3733 OF 5733 -- AMGV1266921

Thick & deep with a square hip! Good performance. Out of a really nice cow!

Herdbook Data for Registry No. - AMGV1531524

Bull

Listing No. - 30



Name: VALS 88 PAY ME 8136

Tattoo: VALS 8136J

GV%: BA36.7

36.7% GV | 62.9% AN | 0.4% SM

Color: Black

HPS: Polled

Breeder: 9528 - THE 88 RANCH

DOB: 4/1/2021

		Expected Progeny Differences											Intake and Carcass						Index Values				
		Growth and Maternal																					
		CED	BW	WW	YW	MK	TM	CEM	HP	PG30	ST	DOC	DMI	YG	CW	REA	MB	FT	ADG	RFI	\$Cow	FPI	EPI
Subject Animal	EPD	11	0.4	79	123	18	57	6	6.18	2.65	18	14		0.06	52	0.39	0.39	0.00				83.70	
	ACC	0.20	0.32	0.21	0.20	0.13		0.14	0.01	0.01	0.10	0.13		0.13	0.16	0.15	0.13	0.12					
	Rank	75	70	20	20	75	45	65	40	10	10	15		90	10	75	40	55					35
Sire	EPD	8	1.5	86	130	22	65	4	10.26	2.78	21	16		0.11	52	0.26	0.47	0.01				87.93	
	ACC	0.50	0.56	0.52	0.49	0.24		0.30	0.01	0.01	0.33	0.39		0.34	0.42	0.41	0.38	0.35					
	Rank																						
Dam	EPD	13	0.0	73	119	14	50	7	2.10	2.52	15	12		0.00	52	0.51	0.31	0.00				79.50	
	ACC	0.24	0.38	0.30	0.28	0.26		0.25	0.01	0.01	0.13	0.19		0.17	0.21	0.21	0.19	0.17					
	Rank																						

Balancer Non-Parent Percentile Ranking

	BW	WW	YW	REA	IMF	FAT
Adj	84	621				
Ratio	101.0	110				



BASIN PAYWEIGHT 1682 -- AMAN17038724

SIRE: VALS 88 PAY ME 0129 -- AMGV1469302

DLW MS DAKOTA 0129X ET -- AMGV1168036

PRAIRIE PRIDE NEXT STEP 2036 -- AMAN17367599

DAM: VALS 88 NEXT STEP 8136 -- AMGV1531427

DLW MS SANDMAN 06Z OF 730 -- AMGV1223164

2 year old bull with length and eye appeal. Sire is a Payweight.



Herdbook Data for Registry No. - AMGV1561066

Bull

Listing No. - 31



Name: VALS 88 CC1 8145

Tattoo: VALS 8145K

GV%: BA43

43% GV | 56.6% AN | 0.4% SM

Color: Black

HPS: Polled

Breeder: 9528 - THE 88 RANCH

DOB: 4/14/2022

		Expected Progeny Differences											Intake and Carcass							Index Values			
		Growth and Maternal																					
		CED	BW	WW	YW	MK	TM	CEM	HP	PG30	ST	DOC	DMI	YG	CW	REA	MB	FT	ADG	RFI	\$Cow	FPI	EPI
Subject Animal	EPD	16	-1.8	70	103	22	57	8	7.61	2.03	15	14		-0.06	35	0.56	0.45	0.00				84.78	
	ACC	0.19	0.30	0.27	0.27	0.12		0.12	0.01	0.01	0.12	0.12		0.13	0.18	0.16	0.12	0.11					
	Rank	15	25	55	65	35	45	30	20	20	45	15		55	50	35	25	55				30	
Sire	EPD	18	-1.7	78	122	24	63	9	7.07	2.31	12	13		-0.14	44	0.83	0.65	-0.01				96.26	
	ACC	0.51	0.57	0.52	0.50	0.23		0.30	0.01	0.01	0.30	0.41		0.35	0.43	0.43	0.39	0.36					
Dam	EPD	14	-1.8	63	91	20	52	8	8.14	1.74	18	15		0.03	29	0.31	0.26	0.02				74.45	
	ACC	0.23	0.38	0.31	0.29	0.25		0.19	0.01	0.01	0.23	0.16		0.14	0.19	0.17	0.14	0.13					

Balancer Non-Parent Percentile Ranking

	BW	WW	YW	REA	IMF	FAT
Adj	80	718	1163			
Ratio	100.0	104	95			



CONNEALY CONFIDENCE PLUS -- AMAN17585576

SIRE: VALS 88 CONFIDENTIAL 601 -- AMGV1439792

VALS 88 SAM 601 OF 920 -- AMGV1372206

VALS 88 CAPITAL UPTOWN 122 -- AMGV1336310

DAM: VALS 88 UP TOWN 8145 OF 9-6 -- AMGV1445379

DDGR CENTERFOLD 6W -- AMGV1119945

Connealy Confidence Plus genetics. Well balanced, thick, moderate frame

Herdbook Data for Registry No. - AMAN17817177



Name: TEHAMA TAHOE B767

Tattoo: B767

American Angus Association Registration # 17817177

GV%:

100% AN

Color:

HPS: Polled

Breeder: Unknown

DOB: 9/6/2013

		Expected Progeny Differences											Intake and Carcass							Index Values				
		Growth and Maternal																						
		CED	BW	WW	YW	MK	TM	CEM	HP	PG30	ST	DOC	DMI	YG	CW	REA	MB	FT	ADG	RFI	\$Cow	FPI	EPI	
Subject Animal	EPD	16	-2.3	96	155	21	69	6	12.01	-2.10	21	14		-0.025	0.11	62	0.61	0.79	0.04	0.141	-0.139	144.92	109.61	253.93
	ACC	0.94	0.97	0.96	0.96	0.79		0.84	0.26	0.17	0.42	0.91		0.28	0.62	0.86	0.82	0.83	0.77	0.25	0.17			
	Rank	20	15	2	1	45	4	55	10	90	4	20		25	>95	2	50	2	>95	3	5	5	1	1
Sire	EPD	15	-0.7	86	140	20	63	8	3.77	-1.85	18	14		-0.070	0.04	54	0.58	0.60	0.02	0.091	-0.035	117.34	96.69	210.24
	ACC	0.29	0.29	0.29	0.29	0.27		0.28	0.26	0.25	0.21	0.29		0.13	0.25	0.29	0.28	0.29	0.27	0.12	0.10			
Dam	EPD	16	-2.4	76	123	20	58	8	8.81	-0.78	16	13		-0.070	0.18	43	0.23	0.61	0.04	0.053	-0.064	108.84	92.13	167.89
	ACC	0.29	0.27	0.28	0.28	0.26		0.27	0.26	0.25	0.24	0.29		0.18	0.25	0.29	0.29	0.28	0.28	0.17	0.15			

Balancer Active Sire Percentile Ranking

	BW	WW	YW	REA	IMF	FAT
Adj	0					
Ratio	*					

SITZ UPWARD 307R -- AMAN14963730

SIRE: TEHAMA UPWARD Y238 -- AMAN16760354

TEHAMA ELITE BLACKBIRD T735 -- AMAN15700660

S A V FINAL ANSWER 0035 -- AMAN13592905

DAM: TEHAMA MARY BLACKBIRD Y684 -- AMAN16876258

TEHAMA MARY BLACKBIRD T073 -- AMAN16018979

Reference Sires

Herdbook Data for Registry No. - AMAN18538178



Name: CONNEALY BLACKHAWK 6198 Tattoo: 6198  
American Angus Association Registration # 18538178

GV%: 100% AN  
Color: HPS: Polled

Breeder: Unknown

Subject Animal	Expected Progeny Differences												Intake and Carcass						Index Values			
	Growth and Maternal																					
	CED	BW	WW	YW	MK	TM	CEM	HP	PG30	ST	DOC	DMI	YG	CW	REA	MB	FT	ADG	RFI	\$Cow	FPI	EPI
EPD	13	-0.6	108	179	19	72	2	2.80	-0.28	18	16		0.25	66	0.27	0.59	0.04				108.35	
ACC	0.88	0.95	0.94	0.93	0.69		0.77	0.19	0.17	0.14	0.79		0.58	0.79	0.74	0.75	0.67					
Rank	45	40	1	1	65	2	95	75	65	20	10		>95	1	90	10	>95				1	
Sire	EPD	18	-3.6	89	156	26	71	9	1.06	1.81	16	15		0.27	52	0.06	0.57	0.05			102.35	
ACC	0.89	0.93	0.92	0.92	0.78		0.79	0.21	0.21	0.10	0.77		0.59	0.81	0.75	0.77	0.69					
Dam	EPD	13	-0.2	82	131	16	57	4	2.48	-0.80	14	14		0.13	44	0.27	0.67	0.03			93.90	
ACC	0.31	0.31	0.31	0.31	0.29		0.30	0.25	0.25	0.18	0.29		0.26	0.30	0.29	0.29	0.28					

Balancer Active Sire Percentile Ranking

	BW	WW	YW	REA	IMF	FAT
Adj	0					
Ratio	*					

CONNEALY ARSENAL 2174 -- AMAN17314528

SIRE: CONNEALY ARMORY -- AMAN17888762

EBBA OF CONANGA -- AMAN15474710

CONNEALY CONSENSUS 7229 -- AMAN16447771

DAM: PRECIOUS OF CONANGA 380X -- AMAN17721274

JMC PRECIOUS LAYLA 8390 3303 -- AMAN16416779

Herdbook Data for Registry No. - AMGV1439848



Name: 88 SPEEDWAY 0129 Tattoo: VALS 0129F

GV%: PB92.96875 92.969% GV | 7.031% AN  
Color: Black (Homo - D) HPS: Polled  
DOB: 3/19/2018

Breeder: 9528 - THE 88 RANCH

Subject Animal	Expected Progeny Differences												Intake and Carcass						Index Values				
	Growth and Maternal																						
	CED	BW	WW	YW	MK	TM	CEM	HP	PG30	ST	DOC	DMI	YG	CW	REA	MB	FT	ADG	RFI	\$Cow	FPI	EPI	
EPD	15	-1.1	63	92	23	54	9	4.93	1.26	17	12	0.030	-0.29	22	0.69	0.30	-0.05	-0.062	0.034	118.36	76.58	49.11	
ACC	0.48	0.61	0.56	0.51	0.16		0.24	0.01	0.01	0.30	0.14	0.04	0.30	0.39	0.37	0.31	0.27	0.04	0.04				
Rank	20	25	70	65	35	55	15	60	40	30	45	80	30	75	50	25	30	70	90	40	40	75	
Sire	EPD	14	0.0	67	97	24	58	10	5.79	0.58	15	11	0.007	-0.22	22	0.49	0.42	-0.05	-0.071	0.012	107.82	80.41	50.91
ACC	0.53	0.62	0.56	0.55	0.27		0.32	0.19	0.09	0.31	0.39	0.10	0.33	0.43	0.40	0.35	0.32	0.11	0.09				
Dam	EPD	11	1.0	66	99	22	55	5	4.08	1.95	17	14	0.053	-0.18	33	0.61	0.05	-0.04	-0.053	0.056	111.72	68.08	59.61
ACC	0.36	0.48	0.40	0.39	0.37		0.28	0.20	0.18	0.20	0.23	0.08	0.22	0.30	0.30	0.20	0.16	0.07	0.06				

GV Active Sire Percentile Ranking

	BW	WW	YW	REA	IMF	FAT
Adj	87	711				
Ratio	107.0	110				

DLW NEW FRONTIER 33A ET -- AMGV1257094

SIRE: JKGF D108 ACCELERATE -- AMGV1354081

JKGF SALLY A108 -- AMGV1262423

ACKG DAKOTA 3T -- AMGV1043000

DAM: DLW MS DAKOTA 0129X ET -- AMGV1168036

DCSF POST ROCK ARATA 76L2 ET -- AMGV761465





Reference Sires

Herdbook Data for Registry No. - AMAN18066037



Name: V A R LEGEND 5019  
American Angus Association Registration # 18066037

Tattoo: 5019  
GV%:  
Color: 100% AN  
HPS: Polled

Breeder: Unknown

Subject Animal	EPD ACC Rank	Expected Progeny Differences											Intake and Carcass							Index Values			
		Growth and Maternal																		\$Cow	FPI	EPI	
		CED	BW	WW	YW	MK	TM	CEM	HP	PG30	ST	DOC	DMI	YG	CW	REA	MB	FT	ADG				RFI
		13	-0.5	88	155	15	59	12	3.92	1.26	15	13	0.048	0.06	60	0.52	0.83	0.01	0.111	-0.066	105.33	103.07	226.03
		0.89	0.96	0.95	0.94	0.81		0.84	0.11	0.09	0.25	0.82	0.11	0.60	0.82	0.77	0.78	0.71	0.11	0.09			
		45	45	5	1	85	30	3	65	40	50	35	80	95	3	65	1	80	4	15	50	1	2
Sire	EPD	12	-1.0	89	158	19	63	10	7.26	2.86	16	13	0.138	0.15	64	0.33	0.95	0.01	0.162	-0.110	112.62	106.83	253.01
	ACC	0.94	0.97	0.97	0.97	0.91		0.92	0.56	0.47	0.49	0.91	0.53	0.64	0.89	0.86	0.87	0.84	0.49	0.41			
Dam	EPD	17	-0.8	80	139	16	56	10	0.58	-0.34	11	16	-0.041	-0.01	65	0.75	0.51	0.00	0.059	-0.022	78.33	91.98	185.22
	ACC	0.44	0.45	0.45	0.45	0.41		0.42	0.01	0.01	0.25	0.41	0.04	0.36	0.43	0.43	0.42	0.40	0.04	0.03			

Balancer Active Sire Percentile Ranking

	BW	WW	YW	REA	IMF	FAT
Adj	0					
Ratio	*					

A A R TEN X 7008 S A -- AMAN15719841

SIRE: V A R DISCOVERY 2240 -- AMAN17262835

DEER VALLEY RITA 0308 -- AMAN16659293

SYDGEN C C & 7 -- AMAN15330743

DAM: PF CC&7 HENRIETTA PRIDE 1044 -- AMAN16924432

SITZ HENRIETTA PRIDE 643T -- AMAN15836552

Herdbook Data for Registry No. - AMAN19405246



Name: SQUARE B TRUE NORTH 8052  
American Angus Association Registration # 19405246

Tattoo: 8052  
GV%:  
Color: 100% AN  
HPS: Polled

Breeder: Unknown

Subject Animal	EPD ACC Rank	Expected Progeny Differences											Intake and Carcass							Index Values			
		Growth and Maternal																		\$Cow	FPI	EPI	
		CED	BW	WW	YW	MK	TM	CEM	HP	PG30	ST	DOC	DMI	YG	CW	REA	MB	FT	ADG				RFI
		20	-4.4	73	128	22	59	10	6.68	0.22	14	14		0.12	26	0.31	0.87	0.06					
		0.89	0.94	0.92	0.91	0.43		0.55	0.08	0.01	0.15	0.82		0.56	0.77	0.72	0.70	0.62					
		3	3	40	15	40	30	10	35	65	60	20		>95	70	90	1	>95					
Sire	EPD	15	-2.0	73	126	22	58	6	11.19	-0.57	13	13	-0.192	0.08	26	0.20	0.62	0.03	-0.205	-0.056	99.49	91.14	13.71
	ACC	0.95	0.97	0.97	0.96	0.79		0.84	0.38	0.14	0.34	0.89	0.52	0.62	0.84	0.80	0.81	0.77	0.46	0.36			
Dam	EPD	14	-1.8	83	139	19	61	4	2.17	1.01	14	16		0.09	55	0.67	0.85	0.04					
	ACC	0.52	0.53	0.53	0.53	0.45		0.47	0.01	0.01	0.23	0.53		0.44	0.55	0.54	0.51	0.48					

Balancer Active Sire Percentile Ranking

	BW	WW	YW	REA	IMF	FAT
Adj	0					
Ratio	*					

COLEMAN CHARLO 0256 -- AMAN16879074

SIRE: S A V RAINFALL 6846 -- AMAN18578963

S A V BLACKCAP MAY 4136 -- AMAN14739095

CONNEALY CONSENSUS -- AMAN15513367

DAM: ELBANNA OF CONANGA 1209 -- AMAN17029025

ELBASTA OF CONANGA 9703 -- AMAN16449958

Reference Sires

Herdbook Data for Registry No. - AMAN19196960



Name: E&E PLUS ONE

Tattoo: 816

American Angus Association Registration # 19196960

GV%:  
Color:

100% AN  
HPS: Polled

Breeder: Unknown

Subject Animal	Expected Progeny Differences												Intake and Carcass						Index Values				
	Growth and Maternal																						
	CED	BW	WW	YW	MK	TM	CEM	HP	PG30	ST	DOC	DMI	YG	CW	REA	MB	FT	ADG	RFI	\$Cow	FPI	EPI	
EPD	18	-3.3	70	124	15	49	6	0.66	2.42	13	14		0.04	43	0.58	0.86	0.03				97.38		
ACC	0.92	0.97	0.95	0.95	0.51		0.64	0.01	0.01	0.15	0.84		0.61	0.83	0.79	0.80	0.73						
Rank	10	10	50	20	85	80	55	90	25	70	20		90	20	55	1	95				2		
Sire	EPD	16	-2.3	81	140	20	60	5	4.51	2.52	15	14		0.06	63	0.92	0.82	0.05				101.52	
	ACC	0.93	0.96	0.95	0.95	0.86	0.88	0.01	0.01	0.37	0.90		0.63	0.87	0.84	0.84	0.80						
Dam	EPD	17	-2.5	60	100	15	45	9	-3.19	2.33	11	12		0.12	30	0.13	0.59	0.03				82.66	
	ACC	0.39	0.38	0.39	0.39	0.32	0.34	0.01	0.01	0.17	0.35		0.32	0.39	0.38	0.37	0.35						

Balancer Active Sire Percentile Ranking

	BW	WW	YW	REA	IMF	FAT
Adj	0					
Ratio	*					

CONNEALY CONFIDENCE 0100 -- AMAN16761479

SIRE: CONNEALY CONFIDENCE PLUS -- AMAN17585576

ELBANNA OF CONANGA 1209 -- AMAN17029025

E&B 1680 PRECISION 1023 -- AMAN13913492

DAM: E&E LADY 1023 PRECISION 936 -- AMAN16454439

E&B LADY 878 NEW DESIGN 441 -- AMAN14755423

Herdbook Data for Registry No. - AMGV1439792



Name: 88 CONFIDENTIAL 601

Tattoo: VALS 601F

GV%: BA35.9375

35.938% GV | 63.281% AN | 0.781% SM

Color: Black (Homo - D)

HPS: Polled (Homo - D)

DOB: 3/3/2018

Breeder: 9528 - THE 88 RANCH

Subject Animal	Expected Progeny Differences												Intake and Carcass						Index Values				
	Growth and Maternal																						
	CED	BW	WW	YW	MK	TM	CEM	HP	PG30	ST	DOC	DMI	YG	CW	REA	MB	FT	ADG	RFI	\$Cow	FPI	EPI	
EPD	18	-1.7	78	122	24	63	9	7.07	2.31	12	13		-0.14	44	0.83	0.65	-0.01				96.26		
ACC	0.51	0.57	0.52	0.50	0.23		0.30	0.01	0.01	0.30	0.41		0.35	0.43	0.43	0.39	0.36						
Rank	10	30	25	25	20	20	20	25	25	75	35		25	25	10	10	35				4		
Sire	EPD	16	-2.3	81	140	20	60	5	4.51	2.52	15	14		0.06	63	0.92	0.82	0.05				101.52	
	ACC	0.93	0.96	0.95	0.95	0.86	0.88	0.01	0.01	0.37	0.90		0.63	0.87	0.84	0.84	0.80						
Dam	EPD	19	-2.0	70	101	28	62	11	9.63	2.10	18	10		-0.24	20	0.60	0.45	-0.04				86.91	
	ACC	0.35	0.45	0.38	0.37	0.32	0.27	0.13	0.13	0.22	0.23		0.22	0.30	0.30	0.19	0.16						

Balancer Active Sire Percentile Ranking

	BW	WW	YW	REA	IMF	FAT
Adj	83	697				
Ratio	98.9	109				

CONNEALY CONFIDENCE 0100 -- AMAN16761479

SIRE: CONNEALY CONFIDENCE PLUS -- AMAN17585576

ELBANNA OF CONANGA 1209 -- AMAN17029025

VRT LAZY TV SAM U451 -- AMGV1079233

DAM: VALS 88 SAM 601 OF 920 -- AMGV1372206

DLW MS COWMAKER 920W OF 301 -- AMGV1118794

Reference Sires

Herdbook Data for Registry No. - AMGV1469302



Name: 88 PAY ME 0129

Tattoo: VALS 0129G

GV%: BA50

50% GV | 50% AN

Color: Black

HPS: Polled

Breeder: 9528 - THE 88 RANCH

DOB: 3/6/2019

		Expected Progeny Differences											Intake and Carcass						Index Values					
		Growth and Maternal											DMI	YG	CW	REA	MB	FT	ADG	RFI	\$Cow	FPI	EPI	
		CED	BW	WW	YW	MK	TM	CEM	HP	PG30	ST	DOC												
Subject Animal	EPD	8	1.5	86	130	22	65	4	10.26	2.78	21	16		0.11	52	0.26	0.47	0.01					87.93	
	ACC	0.50	0.56	0.52	0.49	0.24		0.30	0.01	0.01	0.33	0.39		0.34	0.42	0.41	0.38	0.35						
	Rank	95	85	10	15	35	10	85	10	15	3	10		95	10	85	30	65					20	
Sire	EPD	14	-1.7	84	136	22	63	9	-0.61	0.00	18	14		0.43	50	-0.24	0.64	0.07					95.34	
	ACC	0.95	0.97	0.98	0.97	0.93		0.93	0.01	0.01	0.67	0.93		0.65	0.90	0.88	0.89	0.86						
Dam	EPD	11	1.0	66	99	22	55	5	4.08	1.95	17	14	0.053	-0.18	33	0.61	0.05	-0.04	-0.053	0.056		111.72	68.08	59.61
	ACC	0.36	0.48	0.40	0.39	0.37		0.28	0.20	0.18	0.20	0.23	0.08	0.22	0.30	0.30	0.20	0.16	0.07	0.06				

Balancer Active Sire Percentile Ranking

	BW	WW	YW	REA	IMF	FAT
Adj	93	708				
Ratio	115.3	117				

BASIN PAYWEIGHT 006S -- AMAN15332050

SIRE: BASIN PAYWEIGHT 1682 -- AMAN17038724

21AR O LASS 7017 -- AMAN15875998

ACKG DAKOTA 3T -- AMGV1043000

DAM: DLW MS DAKOTA 0129X ET -- AMGV1168036

DCSF POST ROCK ARATA 76L2 ET -- AMGV761465