

For Sale by Private Treaty

Offered By



THE 88 RANCH
51089 871 RD
ORCHARD, NE 68764-6445
88ranch@gmail.com
www.88ranch.com

All comments, breeding information and calf-at-side notations are provided by the seller. and are wholly the responsibility of the buyer to verify. AGA offers no guarantee of any such claims.

Herdbook Data for Registry No. - AMGV1619117

Bull

Listing No. - 1



Name: VALS 88 CC1 OF 010

Tattoo: VALS 010M

GV%: PC22.7

22.7% GV | 76.9% AN | 0.4% SM

Color: Black

HPS: Polled

Breeder: 9528 - THE 88 RANCH

DOB: 3/28/2024

Subject Animal	EPD	Expected Progeny Differences											Intake and Carcass						Index Values			
		Growth and Maternal																				
		CED	BW	WW	YW	MK	TM	CEM	HP	PG30	ST	DOC	DMI	YG	CW	REA	MB	FT	ADG	RFI	\$Cow	FPI
	19	-3.6	72	115	30	66	10	9.29	0.26	13	12		-0.06	46	0.74	0.67	0.01				95.69	
	ACC	0.23	0.35	0.31	0.29	0.18		0.17	0.05	0.03	0.12	0.14		0.15	0.19	0.19	0.14	0.13				
	Rank	2	4	50	40	4	15	10	25	65	75	50		70	20	20	4	85			5	
Sire	EPD	19	-2.2	73	112	33	69	10	8.53	1.53	12	12		-0.16	49	0.96	0.67	-0.01			95.17	
	ACC	0.54	0.62	0.57	0.55	0.27		0.32	0.09	0.06	0.34	0.41		0.35	0.43	0.42	0.40	0.38				
Dam	EPD	16	-2.7	75	125	27	65	10	10.04	-1.01	14	13		0.04	42	0.51	0.67	0.03			95.52	
	ACC	0.29	0.42	0.35	0.34	0.34		0.28	0.11	0.07	0.19	0.21		0.21	0.28	0.25	0.21	0.21				

Balancer Non-Parent Percentile Ranking

	BW	WW	YW	REA	IMF	FAT
Adj	65	688				
Ratio	83.0	98				



CONNEALY CONFIDENCE PLUS -- AMAN17585576

SIRE: VALS 88 CONFIDENTIAL 601 -- AMGV1439792

VALS 88 SAM 601 OF 920 -- AMGV1372206

S A V RAINFALL 6846 -- AMAN18578963

DAM: VALS 88 RAINFALL 010 OF 8113 -- AMGV1499375

VALS 88 CONFIDENCE PLUS 8113 -- AMGV1445348

Moderate 5 frame thick, stylish bull who weighs right up there with the bigger boys. Mom is a beautiful SAV Rainfall daughter.

Herdbook Data for Registry No. - AMGV1589972

Bull

Listing No. - 2



Name: VALS 88 DETOUR 011

Tattoo: VALS 011L

GV%: BA36

36% GV | 64.1% AN

Color: Black

HPS: Polled

Breeder: 9528 - THE 88 RANCH

DOB: 3/11/2023

Subject Animal	EPD	Expected Progeny Differences											Intake and Carcass						Index Values			
		Growth and Maternal																				
		CED	BW	WW	YW	MK	TM	CEM	HP	PG30	ST	DOC	DMI	YG	CW	REA	MB	FT	ADG	RFI	\$Cow	FPI
	15	-1.5	72	110	21	57	8	6.65	1.40	14	13		0.00	41	0.42	0.35	0.00				82.65	
	ACC	0.18	0.32	0.26	0.23	0.11		0.12	0.01	0.01	0.10	0.06		0.12	0.16	0.15	0.10	0.09				
	Rank	25	30	55	60	75	70	30	40	40	60	30		75	40	70	55	55			50	
Sire	EPD	15	-2.5	74	116	21	58	7	5.65	1.78	13	14		0.02	50	0.54	0.45	0.01			87.52	
	ACC	0.47	0.55	0.49	0.46	0.19		0.23	0.01	0.01	0.29	0.13		0.31	0.41	0.38	0.32	0.31				
Dam	EPD	13	0.7	74	109	21	58	8	7.65	1.02	15	12		-0.02	33	0.32	0.25	-0.01			77.70	
	ACC	0.21	0.37	0.29	0.25	0.22		0.19	0.01	0.01	0.14	0.13		0.13	0.18	0.17	0.10	0.10				

Balancer Non-Parent Percentile Ranking

	BW	WW	YW	REA	IMF	FAT
Adj	75	606				
Ratio	93.0	97				



VALS 88 CONFIDENCE PLUS 602 -- AMGV1439804

SIRE: VALS 88 CC2 506 DETOUR -- AMGV1526165

VALS 88 CAPITAL 506 OF 106 -- AMGV1336301

VALS 88 BLK GRANITE 4035 -- AMGV1372458

DAM: VALS 88 GRANITE ROAD 011 OF 11 -- AMGV1499825

VALS 88 PR GRANITE 11Y -- AMGV1201914

2 Yr. old moderately framed, stylish bull from a 2nd calf heifer. Wasn't able to DNA test him for homo black, but comes from multiple generations of black.

Herdbook Data for Registry No. - AMGV1620318

Bull

Listing No. - 3



Name: VALS 88 TAHOE 27

Tattoo: VALS 27M

GV%: PC18.8

18.8% GV | 81.3% AN

Color: Black

HPS: Polled

Breeder: 9528 - THE 88 RANCH

DOB: 2/22/2024

Subject Animal	EPD	Expected Progeny Differences											Intake and Carcass								Index Values		
		Growth and Maternal																			\$Cow	FPI	EPI
		CED	BW	WW	YW	MK	TM	CEM	HP	PG30	ST	DOC	DMI	YG	CW	REA	MB	FT	ADG	RFI			
	12	-1.0	83	137	28	70	6	7.93	0.62	17	14	-0.028	0.10	49	0.34	0.61	0.02	0.079	-0.060	118.33	95.31	195.11	
	ACC	0.18	0.20	0.19	0.19	0.17		0.17	0.11	0.07	0.14	0.17	0.07	0.14	0.17	0.16	0.17	0.16	0.07	0.05			
	Rank	65	35	15	10	10	5	60	30	40	20	15	25	>95	15	85	10	90	5	15	40	5	2
Sire	EPD	16	-2.5	92	158	28	76	7	10.24	-1.05	18	14	-0.059	0.15	59	0.42	0.79	0.03	0.166	-0.143	126.44	108.59	277.45
	ACC	0.95	0.94	0.93	0.92	0.77		0.86	0.45	0.26	0.57	0.91	0.32	0.61	0.81	0.77	0.85	0.82	0.28	0.20			
Dam	EPD	9	0.6	73	116	27	64	6	5.62	2.30	16	13	0.003	0.04	39	0.26	0.43	0.00	-0.008	0.022	110.18	81.83	112.77
	ACC	0.18	0.24	0.21	0.20	0.17		0.15	0.06	0.06	0.14	0.14	0.02	0.12	0.15	0.13	0.13	0.13	0.02	0.02			

Balancer Non-Parent Percentile Ranking

	BW	WW	YW	REA	IMF	FAT
Adj	102	796				
Ratio	136.0	114				



SIRE: TEHAMA UPWARD Y238 -- AMAN1760354

TEHAMA TAHOE B767 -- AMAN1781717

TEHAMA MARY BLACKBIRD Y684 -- AMAN16876258

DAM: VALS 88 PAY ME 0129 -- AMGV1469302

VALS 88 PAY ME 27 -- AMGV1619946

VALS 88 BANDO 87U BALANCER -- AMGV1082283

Highest performing bull in the pen. Select this bull to use on cows and increase your weaning & yearling weights.

Herdbook Data for Registry No. - AMGV1619128

Bull

Listing No. - 4



Name: VALS 88 CC1 CONFIDENTIAL 55

Tattoo: VALS 55M

GV%: BA33.6

33.6% GV | 66% AN | 0.4% SM

Color: Black

HPS: Polled

Breeder: 9528 - THE 88 RANCH

DOB: 3/19/2024

Subject Animal	EPD	Expected Progeny Differences											Intake and Carcass								Index Values				
		Growth and Maternal																			\$Cow	FPI	EPI		
		CED	BW	WW	YW	MK	TM	CEM	HP	PG30	ST	DOC	DMI	YG	CW	REA	MB	FT	ADG	RFI					
	19	-4.3	62	97	33	63	11	5.20	1.63	14	11		-0.08	39	0.59	0.54	-0.01							87.46	
	ACC	0.20	0.35	0.28	0.25	0.15		0.15	0.02	0.01	0.11	0.11		0.11	0.15	0.14	0.11	0.10							
	Rank	2	3	90	85	1	35	3	65	20	60	75		45	45	35	20	35						30	
Sire	EPD	19	-2.2	73	112	33	69	10	8.53	1.53	12	12		-0.16	49	0.96	0.67	-0.01						95.17	
	ACC	0.54	0.62	0.57	0.55	0.27		0.32	0.09	0.06	0.34	0.41		0.35	0.43	0.42	0.40	0.38							
Dam	EPD	16	-3.7	59	95	33	62	11	1.88	1.73	18	10	-0.001	-0.01	34	0.27	0.40	-0.01	0.017	0.005	112.13	80.62	107.98		
	ACC	0.24	0.45	0.30	0.26	0.32		0.25	0.01	0.01	0.14	0.10		0.02	0.13	0.18	0.16	0.11	0.10	0.02	0.02				

Balancer Non-Parent Percentile Ranking

	BW	WW	YW	REA	IMF	FAT
Adj	63	669				
Ratio	79.0	96				



SIRE: CONNEALY CONFIDENCE PLUS -- AMAN17585576

VALS 88 CONFIDENTIAL 601 -- AMGV1439792

VALS 88 SAM 601 OF 920 -- AMGV1372206

DAM: VALS 88 BANDO 65 -- AMGV1235322

VALS 88 BANDITA 55 OF 365 -- AMGV1336400

VALS 88 CINCHA 365 OF 65 -- AMGV1266927

Read his EPD's and he is a "Hands down" heifer bull ranking in the top 2% for calving ease.

Herdbook Data for Registry No. - AMGV1619129

Bull

Listing No. - 5



Name: VALS 88 CONNEALY COMMERCE 77

Tattoo: VALS 77M

GV%: PC6.3

6.3% GV | 93.8% AN

Color: Black

HPS: Polled

Breeder: 9528 - THE 88 RANCH

DOB: 2/27/2024

Subject Animal	EPD	Expected Progeny Differences											Intake and Carcass							Index Values						
		Growth and Maternal																		\$Cow	FPI	EPI				
		CED	BW	WW	YW	MK	TM	CEM	HP	PG30	ST	DOC	DMI	YG	CW	REA	MB	FT	ADG				RFI			
ACC	0.24	-2.9	87	145	26	69	14	4.27	1.19	14	12		0.12	64	0.61	0.80	0.03								105.64	
Rank	10	10	10	3	25	10	1	75	40	60	50		>95	2	40	1	>95								1	
Sire	EPD	20	-1.3	111	181	27	82	18	3.87	1.00	11	13		0.12	78	0.88	0.95	0.05							123.09	
ACC	0.88	0.91	0.88	0.68	0.34			0.50	0.01	0.01	0.14	0.67		0.41	0.50	0.43	0.66	0.54								
Dam	EPD	12	-3.1	62	108	24	56	9	4.67	1.38	16	11		-0.018	0.11	47	0.29	0.65	0.02	0.041	-0.003			106.26	85.77	139.38
ACC	0.28	0.45	0.35	0.32	0.36			0.27	0.01	0.01	0.18	0.21		0.03	0.20	0.25	0.23	0.21	0.20	0.03	0.03					

Balancer Non-Parent Percentile Ranking

	BW	WW	YW	REA	IMF	FAT
Adj	70	698				
Ratio	90.0	100				



SIRE: G A R SUNBEAM -- AMAN18636166
CONNEALY COMMERCE -- AMAN20132642
AVIRA OF CONANGA 814R -- AMAN19515454

DAM: STYLES CASH R400 -- AMAN17571309
VALS 88 STYLES CASH 77 OF 87 -- AMGV1412535
VALS 88 BANDO 87U BALANCER -- AMGV1082283

Look at this square hipped, stylish Commerce son with well balanced numbers! Marbling seems to be the carcass number people put the most emphasis on and he's top 1%.

Herdbook Data for Registry No. - AMGV1619174

Bull

Listing No. - 6



Name: VALS 88 CC1 CONFIDENTIAL I-87

Tattoo: VALS 187M

GV%: BA30.5

30.5% GV | 69.1% AN | 0.4% SM

Color: Black

HPS: Polled

Breeder: 9528 - THE 88 RANCH

DOB: 3/29/2024

Subject Animal	EPD	Expected Progeny Differences											Intake and Carcass							Index Values							
		Growth and Maternal																		\$Cow	FPI	EPI					
		CED	BW	WW	YW	MK	TM	CEM	HP	PG30	ST	DOC	DMI	YG	CW	REA	MB	FT	ADG				RFI				
ACC	0.19	-1.3	60	97	28	58	9	5.55	1.75	15	11		-0.06	38	0.55	0.53	0.00									81.54	
Rank	15	35	95	85	15	65	15	50	20	45	75		50	50	45	20	55									60	
Sire	EPD	19	-2.2	73	112	33	69	10	8.53	1.53	12	12		-0.16	49	0.96	0.67	-0.01								95.17	
ACC	0.54	0.62	0.57	0.55	0.27			0.32	0.09	0.06	0.34	0.41		0.35	0.43	0.42	0.40	0.38									
Dam	EPD	13	-0.5	59	97	24	54	9	2.57	1.98	18	10		0.001	0.03	37	0.26	0.40	0.00	0.021	0.009			114.15	75.13	112.68	
ACC	0.23	0.48	0.33	0.31	0.36			0.23	0.01	0.01	0.21	0.12		0.03	0.14	0.18	0.17	0.12	0.11	0.03	0.02						

Balancer Non-Parent Percentile Ranking

	BW	WW	YW	REA	IMF	FAT
Adj	80	619				
Ratio	104.0	89				



SIRE: CONNEALY CONFIDENCE PLUS -- AMAN17585576
VALS 88 CONFIDENTIAL 601 -- AMGV1439792
VALS 88 SAM 601 OF 920 -- AMGV1372206

DAM: VRT LAZY TV CINCHA P546 -- AMGV903059
VALS 88 CINCH 1-87Y -- AMGV1201894
VALS 88 BANDO 87U BALANCER -- AMGV1082283

Beautiful picture of a nice bull taken at weaning time. 2/3 Angus 1/3 Gelbvieh

Herdbook Data for Registry No. - AMGV1619123

Bull

Listing No. - 7



Name: VALS 88 CONNEALY COMMERCE 211

Tattoo: VALS 211M

GV%: BA25

25% GV | 75% AN

Color: Black

HPS: Polled

Breeder: 9528 - THE 88 RANCH

DOB: 3/8/2024

Subject Animal	Expected Progeny Differences												Intake and Carcass						Index Values					
	Growth and Maternal																							
	CED	BW	WW	YW	MK	TM	CEM	HP	PG30	ST	DOC	DMI	YG	CW	REA	MB	FT	ADG	RFI	\$Cow	FPI	EPI		
Subject Animal	EPD	18	-3.0	69	114	28	62	14	4.24	1.05	16	11		0.06	44	0.50	0.75	0.03				94.20		
	ACC	0.24	0.37	0.32	0.29	0.15			0.17	0.01	0.01	0.08	0.18		0.16	0.21	0.19	0.18	0.15					
	Rank	4	10	65	50	15	40	1	75	40	30	75		90	30	55	3	95				10		
Sire	EPD	20	-1.3	111	181	27	82	18	3.87	1.00	11	13		0.12	78	0.88	0.95	0.05				123.09		
	ACC	0.88	0.91	0.88	0.68	0.34			0.50	0.01	0.01	0.14	0.67		0.41	0.50	0.43	0.66	0.54					
	Rank																							
Dam	EPD	14	-3.1	50	80	28	53	8	4.61	1.10	22	10	-0.076	-0.01	25	0.33	0.55	0.01	0.003	-0.003	136.06	77.17	91.05	
	ACC	0.30	0.49	0.36	0.33	0.36			0.24	0.06	0.05	0.30	0.18	0.09	0.19	0.25	0.24	0.19	0.16	0.09	0.08			
	Rank																							

Balancer Non-Parent Percentile Ranking

	BW	WW	YW	REA	IMF	FAT
Adj	72	593				
Ratio	93.0	85				

G A R SUNBEAM -- AMAN1863166

SIRE: CONNEALY COMMERCE -- AMAN20132642

AVIRA OF CONANGA 814R -- AMAN19515454

JCB LAZY TV ANSWER W724 ET -- AMGV1138509

DAM: VALS 88 JAFF 211Z -- AMGV1235023

MLH MISS GOLDRUSH T26 -- AMGV1029269

The dam is coming with her 12th calf and never misses. Her milk production is beginning to slip due to her age bringing her weaning weight ratio averages down to 100 on 11 calves. Use this bull on heifers with confidence.

Herdbook Data for Registry No. - AMGV1619124

Bull

Listing No. - 8



Name: VALS 88 YON FLAGSHIP 227

Tattoo: VALS 227M

GV%: PC12.5

12.5% GV | 87.5% AN

Color: Black

HPS: Polled

Breeder: 9528 - THE 88 RANCH

DOB: 2/22/2024

Subject Animal	Expected Progeny Differences												Intake and Carcass						Index Values					
	Growth and Maternal																							
	CED	BW	WW	YW	MK	TM	CEM	HP	PG30	ST	DOC	DMI	YG	CW	REA	MB	FT	ADG	RFI	\$Cow	FPI	EPI		
Subject Animal	EPD	19	-3.2	81	142	26	66	12	2.16	0.75	11	14		0.09	53	0.48	0.91	0.02				106.88		
	ACC	0.25	0.35	0.31	0.27	0.14			0.20	0.01	0.01	0.06	0.17		0.16	0.20	0.18	0.17	0.16					
	Rank	2	10	20	4	25	15	1	95	40	90	15		>95	10	65	1	90				1		
Sire	EPD	21	-3.4	104	189	26	78	17	2.64	0.82	11	17		0.18	74	0.58	1.27	0.04				130.97		
	ACC	0.81	0.85	0.79	0.54	0.36			0.52	0.01	0.01	0.15	0.58		0.40	0.49	0.42	0.64	0.53					
	Rank																							
Dam	EPD	17	-2.0	66	107	25	59	6	1.68	0.68	11	11		-0.01	35	0.42	0.56	0.01				86.15		
	ACC	0.25	0.38	0.33	0.31	0.27			0.24	0.05	0.04	0.15	0.20		0.19	0.23	0.23	0.19	0.18					
	Rank																							

Balancer Non-Parent Percentile Ranking

	BW	WW	YW	REA	IMF	FAT
Adj	65	671				
Ratio	88.0	96				

GB FIREBALL 672 -- AMAN18690054

SIRE: YON FLAGSHIP -- AMAN20024449

YON QUEEN G1085 -- AMAN19493362

E&E PLUS ONE -- AMAN19196960

DAM: VALS 88 PLUS ONE 227 -- AMGV1575591

VALS 88 MO DENSITY 2727 727 -- AMGV1235337



Yon's 2025 bull sale had 21 sons by Flagship that averaged \$8740/hd. This 227 bull is safe for heifers ranking in the top 2% calving ease with superior performance ranking top 20% weaning weight and 4% yearling weight. Top 1% marbling, 10% carcass weight, 1% feedlot performance

Herdbook Data for Registry No. - AMGV1619712

Bull

Listing No. - 9



Name: VALS 88 SITZ DOMAIN 230

Tattoo: VALS 230M

GV%: PC12.5

12.5% GV | 87.5% AN

Color: Black

HPS: Polled

Breeder: 9528 - THE 88 RANCH

DOB: 2/22/2024

Subject Animal	Expected Progeny Differences																Index Values										
	Growth and Maternal								Intake and Carcass								\$Cow	FPI	EPI								
	CED	BW	WW	YW	MK	TM	CEM	HP	PG30	ST	DOC	DMI	YG	CW	REA	MB				FT	ADG	RFI					
EPD	13	-1.7	86	152	25	68	9			10	14		0.17	56	0.39	0.82	0.04								103.68		
ACC	0.24	0.33	0.27	0.25	0.12		0.19			0.16	0.13		0.14	0.17	0.16	0.17	0.15										
Rank	50	25	10	2	30	10	15			95	15		>95	5	80	1	>95								1		
Sire	EPD	13	-2.7	88	166	30	74	7		7	18		0.27	60	0.40	1.03	0.07									111.98	
	ACC	0.80	0.86	0.82	0.69	0.32		0.47		0.08	0.39		0.36	0.47	0.37	0.58	0.46										
Dam	EPD	12	0.2	82	137	20	60	11	4.97	-0.40	14	11	0.035	0.07	50	0.36	0.62	0.01	0.074	-0.045	96.35	93.01	184.92				
	ACC	0.23	0.36	0.31	0.29	0.26		0.25	0.01	0.01	0.14	0.20	0.06	0.18	0.23	0.21	0.19	0.18	0.06	0.05							

Balancer Non-Parent Percentile Ranking

	BW	WW	YW	REA	IMF	FAT
Adj	67	715				
Ratio	91.0	102				



SITZ LOGO 8148 -- AMAN19087441
 SIRE: SITZ DOMAIN 12371 -- AMAN19974072
 SITZ EMMA E 129 -- AMAN19362603
 V A R LEGEND 5019 -- AMAN18066037
 DAM: VALS 88 LEGEND 230 -- AMGV1575593
 VALS 88 MS. TANK 30 OF 9-50 -- AMGV1266196

Stylish Sitz Domain son out of a 1st calf heifer that has performance numbers. 88% Angus

Herdbook Data for Registry No. - AMGV1619721

Bull

Listing No. - 10



Name: VALS 88 SITZ DOMAIN 235

Tattoo: VALS 235M

GV%: PC16

16% GV | 84% AN

Color: Black

HPS: Polled

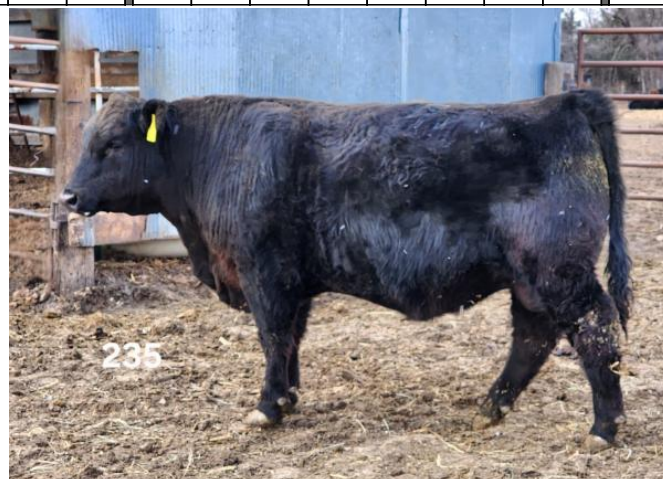
Breeder: 9528 - THE 88 RANCH

DOB: 2/22/2024

Subject Animal	Expected Progeny Differences																Index Values											
	Growth and Maternal								Intake and Carcass								\$Cow	FPI	EPI									
	CED	BW	WW	YW	MK	TM	CEM	HP	PG30	ST	DOC	DMI	YG	CW	REA	MB				FT	ADG	RFI						
EPD	12	-1.1	90	151	29	74	7			9	14		0.14	58	0.44	0.76	0.03									103.20		
ACC	0.24	0.32	0.26	0.24	0.09		0.17			0.04	0.12		0.12	0.15	0.14	0.14	0.14											
Rank	65	35	3	2	10	2	40			>95	15		>95	4	75	2	>95								1			
Sire	EPD	13	-2.7	88	166	30	74	7		7	18		0.27	60	0.40	1.03	0.07										111.98	
	ACC	0.80	0.86	0.82	0.69	0.32		0.47		0.08	0.39		0.36	0.47	0.37	0.58	0.46											
Dam	EPD	9	1.2	82	128	28	69	6	4.69	2.08	11	11		0.02	49	0.39	0.49	-0.01									88.00	
	ACC	0.22	0.33	0.28	0.25	0.20		0.18	0.03	0.03	0.09	0.13		0.13	0.16	0.14	0.13	0.13										

Balancer Non-Parent Percentile Ranking

	BW	WW	YW	REA	IMF	FAT
Adj	68	769				
Ratio	92.0	110				



SITZ LOGO 8148 -- AMAN19087441
 SIRE: SITZ DOMAIN 12371 -- AMAN19974072
 SITZ EMMA E 129 -- AMAN19362603
 VALS 88 BANKROLL -- AMGV1386621
 DAM: VALS 88 BANKROLL 235 -- AMGV1619408
 VALS 88 GOOD NIGHT 4035 -- AMGV1305936

I'm super impressed with every Sitz Domain son in the pen this year. They are everything you want in a bull to move your genetics forward.

Herdbook Data for Registry No. - AMGV1619713

Bull

Listing No. - 11



Name: VALS 88 SITZ DOMAIN 240

Tattoo: VALS 240M

GV%: PC12.5

12.5% GV | 87.5% AN

Color: Black

HPS: Polled

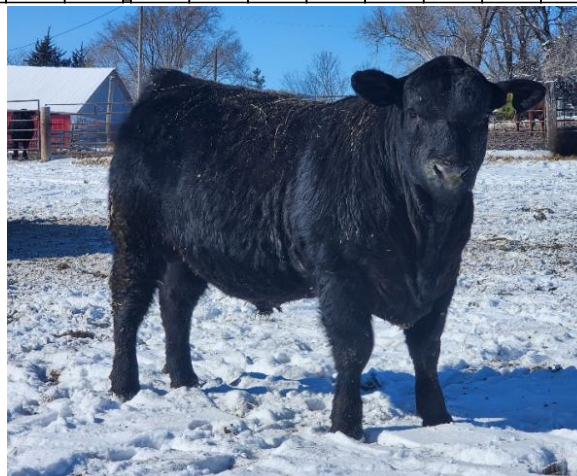
Breeder: 9528 - THE 88 RANCH

DOB: 2/24/2024

Subject Animal	Expected Progeny Differences												Intake and Carcass						Index Values				
	Growth and Maternal																						
	EPD	CED	BW	WW	YW	MK	TM	CEM	HP	PG30	ST	DOC	DMI	YG	CW	REA	MB	FT	ADG	RFI	\$Cow	FPI	EPI
EPD	14	-0.8	89	150	29	73	8			12	15		0.16	50	0.42	0.80	0.05				104.09		
ACC	0.23	0.32	0.27	0.24	0.10		0.17			0.04	0.12		0.12	0.16	0.14	0.14	0.12						
Rank	35	40	4	2	10	2	25			85	4		>95	10	75	1	>95				1		
Sire	EPD	13	-2.7	88	166	30	74	7		7	18		0.27	60	0.40	1.03	0.07				111.98		
ACC	0.80	0.86	0.82	0.69	0.32		0.47			0.08	0.39		0.36	0.47	0.37	0.58	0.46						
Dam	EPD	16	-0.6	80	120	28	67	9	6.94	1.32	17	13		0.05	36	0.37	0.53	0.02				91.14	
ACC	0.21	0.33	0.27	0.25	0.20		0.18	0.01	0.01	0.12	0.13		0.14	0.18	0.17	0.13	0.12						

Balancer Non-Parent Percentile Ranking

	BW	WW	YW	REA	IMF	FAT
Adj	77	760				
Ratio	104.0	109				



SITZ LOGO 8148 -- AMAN19087441

SIRE: SITZ DOMAIN 12371 -- AMAN19974072

SITZ EMMA E 129 -- AMAN19362603

VALS 88 PAY UP 9-6 -- AMGV1469305

DAM: VALS 88 PAY UP 240 OUT OF 504 -- AMGV1575639

VALS 88 LONG HAUL 504 OF 39 -- AMGV1336432

Another nice Sitz Domain son that is 88% Angus.

Herdbook Data for Registry No. - AMGV1619120

Bull

Listing No. - 12



Name: VALS 88 BLACK HAWK 255

Tattoo: VALS 255M

GV%: PC7.8

7.8% GV | 92.2% AN

Color: Black

HPS: Polled

Breeder: 9528 - THE 88 RANCH

DOB: 2/18/2024

Subject Animal	Expected Progeny Differences												Intake and Carcass						Index Values				
	Growth and Maternal																						
	EPD	CED	BW	WW	YW	MK	TM	CEM	HP	PG30	ST	DOC	DMI	YG	CW	REA	MB	FT	ADG	RFI	\$Cow	FPI	EPI
EPD	14	-1.5	93	153	26	73	7	2.42	1.07	19	14		0.15	56	0.36	0.62	0.03				102.56		
ACC	0.26	0.36	0.31	0.29	0.19		0.23	0.06	0.04	0.10	0.19		0.16	0.20	0.19	0.19	0.17						
Rank	35	25	2	2	25	2	40	95	40	10	15		>95	5	85	10	>95				1		
Sire	EPD	14	-0.8	105	176	24	76	3	4.93	0.66	22	14		0.20	56	0.25	0.61	0.03				108.17	
ACC	0.88	0.90	0.90	0.88	0.80		0.82	0.22	0.18	0.25	0.80		0.51	0.62	0.58	0.76	0.68						
Dam	EPD	14	-1.4	84	134	29	71	10	-0.08	1.48	16	13	-0.004	0.11	55	0.47	0.63	0.03	0.028	-0.002	103.13	97.39	155.64
ACC	0.24	0.38	0.32	0.30	0.23		0.24	0.04	0.01	0.11	0.18		0.01	0.16	0.22	0.19	0.18	0.16	0.01	0.01			

Balancer Non-Parent Percentile Ranking

	BW	WW	YW	REA	IMF	FAT
Adj	68	710				
Ratio	92.0	102				



CONNELLY ARMORY -- AMAN17888762

SIRE: CONNELLY BLACKHAWK 6198 -- AMAN18538178

PRECIOUS OF CONANGA 380X -- AMAN17721274

POSS RAWHIDE -- AMAN19416968

DAM: VALS 88 RAWHIDE 255 -- AMGV1575651

VALS 88 BANDITA 55 OF 365 -- AMGV1336400

Connealy Black Hawk will add pounds for weaning and yearling weights. This bull has top rankings in 12 categories.

Herdbook Data for Registry No. - AMGV1619715

Bull

Listing No. - 13



Name: VALS 88 SITZ DOMAIN 256

Tattoo: VALS 256M

GV%: PC14.5

14.5% GV | 85.6% AN

Color: Black

HPS: Polled

Breeder: 9528 - THE 88 RANCH

DOB: 2/17/2024

Subject Animal	Expected Progeny Differences												Intake and Carcass						Index Values				
	Growth and Maternal																						
	EPD	CED	BW	WW	YW	MK	TM	CEM	HP	PG30	ST	DOC	DMI	YG	CW	REA	MB	FT	ADG	RFI	\$Cow	FPI	EPI
EPD	14	-2.3	90	157	30	75	7			12	14		0.15	55	0.48	0.84	0.04				107.79		
ACC	0.24	0.33	0.28	0.25	0.12		0.18			0.06	0.13		0.14	0.19	0.17	0.17	0.14						
Rank	35	15	3	1	4	1	40			85	15		>95	10	65	1	>95				1		
Sire	EPD	13	-2.7	88	166	30	74	7		7	18		0.27	60	0.40	1.03	0.07				111.98		
ACC	0.80	0.86	0.82	0.69	0.32		0.47			0.08	0.39		0.36	0.47	0.37	0.58	0.46						
Dam	EPD	14	-1.3	85	139	30	73	7	8.14	0.02	16	12		0.03	46	0.50	0.64	0.01				98.52	
ACC	0.21	0.37	0.32	0.30	0.28		0.22	0.09	0.06	0.16	0.17		0.18	0.23	0.22	0.17	0.15						

Balancer Non-Parent Percentile Ranking

	BW	WW	YW	REA	IMF	FAT
Adj	67	746				
Ratio	91.0	107				



SITZ LOGO 8148 -- AMAN19087441
 SIRE: SITZ DOMAIN 12371 -- AMAN19974072
 SITZ EMMA E 129 -- AMAN19362603

TEHAMA TAHOE B767 -- AMAN17817177
 DAM: VALS 88 TAHOE 256 -- AMGV157535
 VALS 88 ACE 56 OF T26 -- AMGV1337360

Really nice Sitz Domain out of a beautiful Tahoe daughter. He is 86% Angus.

Herdbook Data for Registry No. - AMGV1619121

Bull

Listing No. - 14



Name: VALS 88 POSS DEADWOOD 316

Tattoo: VALS 316M

GV%: PC15.6

15.6% GV | 84.4% AN

Color: Black

HPS: Polled

Breeder: 9528 - THE 88 RANCH

DOB: 3/24/2024

Subject Animal	Expected Progeny Differences												Intake and Carcass						Index Values				
	Growth and Maternal																						
	EPD	CED	BW	WW	YW	MK	TM	CEM	HP	PG30	ST	DOC	DMI	YG	CW	REA	MB	FT	ADG	RFI	\$Cow	FPI	EPI
EPD	15	-1.1	85	139	26	68	9	3.11	0.81	16	14		0.10	61	0.51	0.96	0.02				105.80		
ACC	0.25	0.36	0.33	0.31	0.17		0.20	0.04	0.03	0.09	0.19		0.18	0.23	0.22	0.19	0.18						
Rank	25	35	10	10	25	10	15	85	40	35	15		>95	3	60	1	90				1		
Sire	EPD	13	-0.3	102	177	27	78	9	1.21	0.49	13	14		0.17	91	0.73	1.67	0.03				133.25	
ACC	0.86	0.90	0.84	0.76	0.38		0.63	0.05	0.01	0.14	0.80		0.57	0.72	0.68	0.82	0.73						
Dam	EPD	19	-3.6	72	108	24	61	11	5.01	1.12	18	13		0.04	36	0.35	0.26	0.02				84.37	
ACC	0.37	0.49	0.41	0.39	0.40		0.29	0.13	0.13	0.25	0.20		0.24	0.33	0.32	0.20	0.19						

Balancer Non-Parent Percentile Ranking

	BW	WW	YW	REA	IMF	FAT
Adj	85	691				
Ratio	110.0	99				



POSS MAVERICK -- AMAN18962396
 SIRE: POSS DEADWOOD -- AMAN19597261
 POSS ELLUNAMERE 399 -- AMAN17678028

S A V FINAL ANSWER 0035 -- AMAN13592905
 DAM: VALS 88 FINAL ANSWER 316 -- AMGV1266373
 VALS 88 CINCH 1160Y -- AMGV1201866

Poss Deadwood made headlines by selling for \$900,000 at the Poss Angus sale in Nebraska a few years ago. I purchased a few straws of semen to flush to one of our best cows, 316. There are 2 full brothers in the offering this year.

Herdbook Data for Registry No. - AMGV1619292

Bull

Listing No. - 17



Name: VALS 88 CONNEALY COMMERCE 605

Tattoo: VALS 605M

GV%: PC15.7

15.7% GV | 84.4% AN

Color: Black

HPS: Polled

Breeder: 9528 - THE 88 RANCH

DOB: 3/9/2024

Subject Animal	EPD	Expected Progeny Differences											Intake and Carcass						Index Values				
		Growth and Maternal																					
		CED	BW	WW	YW	MK	TM	CEM	HP	PG30	ST	DOC	DMI	YG	CW	REA	MB	FT	ADG	RFI	\$Cow	FPI	EPI
	13	3.4	101	164	27	78	10	1.53	1.68	13	11		0.05	64	0.77	0.73	0.03						
	ACC	0.23	0.37	0.32	0.29	0.15		0.18	0.02	0.02	0.08	0.19		0.16	0.20	0.18	0.19	0.17					
	Rank	50	>95	1	1	15	1	10	95	20	75	70		95	2	15	3	>95					
Sire	EPD	20	-1.3	111	181	27	82	18	3.87	1.00	11	13		0.12	78	0.88	0.95	0.05					
	ACC	0.88	0.91	0.88	0.68	0.34		0.50	0.01	0.01	0.14	0.67		0.41	0.50	0.43	0.66	0.54					
Dam	EPD	10	4.3	74	119	27	64	4	-0.81	2.36	15	10	0.141	-0.02	39	0.51	0.51	0.01	0.023	0.056	97.84	80.26	121.02
	ACC	0.26	0.44	0.34	0.32	0.33		0.25	0.10	0.10	0.22	0.20	0.08	0.20	0.25	0.24	0.21	0.20	0.07	0.06			

Balancer Non-Parent Percentile Ranking

	BW	WW	YW	REA	IMF	FAT
Adj	100	780				
Ratio	127.0	112				



G A R SUNBEAM -- AMAN18636166

SIRE: CONNEALY COMMERCE -- AMAN20132642

AVIRA OF CONANGA 814R -- AMAN19515454

PA POWER TOOL 9108 -- AMAN16381311

DAM: VALS 88 POWER TOOL 605 OF 305 -- AMGV1372414

VALS 88 CINCHA 305 OF 5709 -- AMGV1266917

Put stars next to this one! He's really nice!

Herdbook Data for Registry No. - AMGV1619130

Bull

Listing No. - 18



Name: VALS 88 YON FLAGSHIP 789

Tattoo: VALS 789M

GV%: PC20.3

20.3% GV | 79.7% AN

Color: Black

HPS: Polled

Breeder: 9528 - THE 88 RANCH

DOB: 2/24/2024

Subject Animal	EPD	Expected Progeny Differences											Intake and Carcass						Index Values				
		Growth and Maternal																					
		CED	BW	WW	YW	MK	TM	CEM	HP	PG30	ST	DOC	DMI	YG	CW	REA	MB	FT	ADG	RFI	\$Cow	FPI	EPI
	18	-2.7	80	137	23	63	13	3.20	1.84	14	14		0.10	51	0.39	0.75	0.02						
	ACC	0.22	0.35	0.30	0.25	0.14		0.17	0.01	0.01	0.06	0.17		0.14	0.18	0.17	0.15	0.14					
	Rank	4	10	20	10	50	30	1	85	20	60	15		>95	10	80	2	90					
Sire	EPD	21	-3.4	104	189	26	78	17	2.64	0.82	11	17		0.18	74	0.58	1.27	0.04					
	ACC	0.81	0.85	0.79	0.54	0.36		0.52	0.01	0.01	0.15	0.58		0.40	0.49	0.42	0.64	0.53					
Dam	EPD	15	-2.9	66	99	20	53	9	3.77	2.85	16	12		-0.01	35	0.29	0.29	-0.01					
	ACC	0.23	0.41	0.29	0.26	0.29		0.19	0.01	0.01	0.15	0.15		0.15	0.19	0.18	0.12	0.12					

Balancer Non-Parent Percentile Ranking

	BW	WW	YW	REA	IMF	FAT
Adj	80	619				
Ratio	101.0	89				

GB FIREBALL 672 -- AMAN18690054

SIRE: YON FLAGSHIP -- AMAN20024449

YON QUEEN G1085 -- AMAN19493362

VALS 88 FINAL SAY 1488 -- AMGV1305621

DAM: VALS 88 029 FINAL SAY 789 OF 107 -- AMGV1412500

VALS 88 ALLIANCE I87 107Y -- AMGV1201826

Moderate 5 or 5.5 frame bull out of Flagship, the bull Knoll Crest selected from Yon's sale for his maternal traits.

Herdbook Data for Registry No. - AMGV1619294

Bull

Listing No. - 19



Name: VALS 88 CC1 CONFIDENTIAL 912

Tattoo: VALS 912M

GV%: PC21.9

21.9% GV | 77.7% AN | 0.4% SM

Color: Black

HPS: Polled

Breeder: 9528 - THE 88 RANCH

DOB: 3/22/2024

Subject Animal	EPD	Expected Progeny Differences											Intake and Carcass						Index Values								
		Growth and Maternal																	\$Cow	FPI	EPI						
		CED	BW	WW	YW	MK	TM	CEM	HP	PG30	ST	DOC	DMI	YG	CW	REA	MB	FT				ADG	RFI				
ACC	0.20	-0.6	76	123	31	70	9	8.54	1.88	13	12		0.01	50	0.62	0.61	0.02								92.09		
Rank	25	45	35	25	2	5	15	25	20	75	50		85	10	40	10	90								10		
Sire	EPD	19	-2.2	73	112	33	69	10	8.53	1.53	12	12		-0.16	49	0.96	0.67	-0.01								95.17	
ACC	0.54	0.62	0.57	0.55	0.27		0.32	0.09	0.06	0.34	0.41		0.35	0.43	0.42	0.40	0.38										
Dam	EPD	14	-1.2	81	132	29	70	10	8.55	2.23	15	13	-0.032	0.18	53	0.31	0.55	0.04	0.015	0.007				108.88	92.82	148.03	
ACC	0.28	0.41	0.34	0.33	0.31		0.28	0.13	0.12	0.20	0.20	0.01	0.21	0.27	0.26	0.20	0.20	0.01	0.01								

Balancer Non-Parent Percentile Ranking

	BW	WW	YW	REA	IMF	FAT
Adj	88	685				
Ratio	111.0	98				



CONNEALY CONFIDENCE PLUS -- AMAN17585576

SIRE: VALS 88 CONFIDENTIAL 601 -- AMGV1439792

VALS 88 SAM 601 OF 920 -- AMGV1372206

BASIN PAYWEIGHT 1682 -- AMAN17038724

DAM: VALS 88 PAYWEIGHT 912 OF 712 -- AMGV1475199

VALS 88 STING RAY 712 OF 55 -- AMGV1412532

This bull's mom has been doing an impressive job on the ranch as a cow paving her way. Being out of Confidential, he has a well balanced set of EPD's.

Herdbook Data for Registry No. - AMGV1619175

Bull

Listing No. - 20



Name: VALS 88 YON FLAGSHIP 921

Tattoo: VALS 921M

GV%: PC18.2

18.2% GV | 81.7% AN | 0.2% XX

Color: Black

HPS: Polled

Breeder: 9528 - THE 88 RANCH

DOB: 3/4/2024

Subject Animal	EPD	Expected Progeny Differences											Intake and Carcass						Index Values								
		Growth and Maternal																	\$Cow	FPI	EPI						
		CED	BW	WW	YW	MK	TM	CEM	HP	PG30	ST	DOC	DMI	YG	CW	REA	MB	FT				ADG	RFI				
ACC	0.23	-0.1	98	168	24	72	12	3.44	1.61	14	14		0.10	61	0.53	0.87	0.02									110.61	
Rank	35	55	1	1	40	3	1	85	20	60	15		>95	3	55	1	90									1	
Sire	EPD	21	-3.4	104	189	26	78	17	2.64	0.82	11	17		0.18	74	0.58	1.27	0.04								130.97	
ACC	0.81	0.85	0.79	0.54	0.36		0.52	0.01	0.01	0.15	0.58		0.40	0.49	0.42	0.64	0.53										
Dam	EPD	9	1.7	84	136	21	62	9	4.24	2.40	16	12		0.02	45	0.41	0.47	0.00								87.85	
ACC	0.26	0.41	0.32	0.30	0.30		0.25	0.01	0.01	0.16	0.20		0.18	0.23	0.22	0.18	0.17										

Balancer Non-Parent Percentile Ranking

	BW	WW	YW	REA	IMF	FAT
Adj	89	745				
Ratio	113.0	107				



GB FIREBALL 672 -- AMAN18690054

SIRE: YON FLAGSHIP -- AMAN20024449

YON QUEEN G1085 -- AMAN19493362

V A R LEGEND 5019 -- AMAN18066037

DAM: VALS 88 LEGEND 921 OF 2121 -- AMGV1475038

VALS 88 FREE REFLECTION 2121Z -- AMGV1235071

A very impressive looking Flagship son in the top 1% WW & YW and top 3% Total Maternal. If you keep replacement heifers back, then this bull will make some nice daughters along with a good set of steers.

Herdbook Data for Registry No. - AMGV1619171

Bull

Listing No. - 21



Name: VALS 88 STUN GUN 970

Tattoo: VALS 970M

GV%: BA46.5

46.5% GV | 53.5% AN

Color: Black

HPS: Polled

Breeder: 9528 - THE 88 RANCH

DOB: 3/25/2024

Subject Animal	Expected Progeny Differences												Intake and Carcass						Index Values			
	Growth and Maternal																					
	EPD	CED	BW	WW	YW	MK	TM	CEM	HP	PG30	ST	DOC	DMI	YG	CW	REA	MB	FT	ADG	RFI	\$Cow	FPI
EPD	12	0.6	74	114	22	60	7	5.08	1.96	18	11		0.03	37	0.31	0.44	0.01				82.82	
ACC	0.19	0.33	0.27	0.25	0.13		0.14	0.02	0.02	0.11	0.12		0.12	0.17	0.14	0.12	0.11					
Rank	65	75	45	50	65	50	45	65	20	10	75		85	50	90	35	75				50	
Sire	EPD	14	-1.8	68	108	26	60	6	3.69	1.99	20	11		0.15	43	0.16	0.43	0.03			82.42	
ACC	0.51	0.59	0.55	0.53	0.25		0.30	0.10	0.09	0.33	0.41		0.34	0.44	0.39	0.39	0.36					
Dam	EPD	12	2.3	78	118	19	58	8	6.47	1.93	16	11		-0.09	31	0.45	0.45	-0.01			83.09	
ACC	0.22	0.39	0.27	0.25	0.26		0.19	0.01	0.01	0.14	0.14		0.14	0.19	0.17	0.13	0.12					

Balancer Non-Parent Percentile Ranking

	BW	WW	YW	REA	IMF	FAT
Adj	86	684				
Ratio	107.0	98				



SIRE: MUSGRAVE 316 STUNNER -- AMAN18467508

VALS 88 STUN GUN 11 -- AMGV1526087

VALS 88 PR GRANITE 11Y -- AMGV1201914

JKGF D108 ACCELERATE -- AMGV1354081

DAM: VALS 88 ACCELERATE 970 OF 6070 -- AMGV1525993

VALS 88 FINAL ANSWER 607 OF 407 -- AMGV1372460

One of the more easy fleshing, moderate framed, thick bulls in the pen.

Herdbook Data for Registry No. - AMGV1619176

Bull

Listing No. - 22



Name: VALS 88 RED MISSILE 976

Tattoo: VALS 976M

GV%: BA34.2

34.2% GV | 39.1% AR | 26.6% AN | 0.2% XX

Color: Red

HPS: Polled

Breeder: 9528 - THE 88 RANCH

DOB: 4/17/2024

Subject Animal	Expected Progeny Differences												Intake and Carcass						Index Values			
	Growth and Maternal																					
	EPD	CED	BW	WW	YW	MK	TM	CEM	HP	PG30	ST	DOC	DMI	YG	CW	REA	MB	FT	ADG	RFI	\$Cow	FPI
EPD	11	-0.4	69	105	23	58	7	3.09	0.57	14	14		0.03	30	0.19	0.42	0.00				80.04	
ACC	0.19	0.32	0.19	0.18	0.10		0.12	0.02	0.01	0.10	0.06		0.10	0.13	0.12	0.11	0.10					
Rank	80	50	65	70	55	65	45	85	40	60	15		85	75	>95	40	55				65	
Sire	EPD	8	1.2	64	90	20	52	5	3.77	1.95	14	12		0.00	26	0.23	0.32	0.00			71.07	
ACC	0.45	0.53	0.44	0.42	0.16		0.22	0.01	0.01	0.28	0.09		0.29	0.36	0.35	0.31	0.29					
Dam	EPD	14	-2.0	74	119	26	63	9	2.42	-0.82	15	16		0.05	35	0.16	0.52	0.00			89.13	
ACC	0.27	0.40	0.29	0.27	0.23		0.25	0.07	0.06	0.17	0.17		0.15	0.20	0.18	0.16	0.14					

Balancer Non-Parent Percentile Ranking

	BW	WW	YW	REA	IMF	FAT
Adj	81	594				
Ratio	101.0	*				

VALS 88 BLK GRANITE 4035 -- AMGV1372458

SIRE: VALS 88 RED MISSILE -- AMGV1526131

VALS 88 FREE REFLECTION 2121Z -- AMGV1235071

OVER DRAFT PICK 413D -- AMAR3548524

DAM: VALS 88 DRAFT PICK 976 OF 76 -- AMGV1475209

VALS 88 OLY 76 OF 5961 -- AMGV1407272

A red bull for our red cattle customers. There are 2 more red, performance - type half brothers to this one in the pen that don't have papers.

Herdbook Data for Registry No. - AMGV1619122

Bull

Listing No. - 25



Name: VALS 88 POKEMAN 1921

Tattoo: VALS 1921M

GV%: PC13.1

13.1% GV | 87% AN

Color: Black

HPS: Polled

Breeder: 9528 - THE 88 RANCH

DOB: 4/14/2024

Subject Animal	EPD	Expected Progeny Differences											Intake and Carcass						Index Values								
		Growth and Maternal																	\$Cow	FPI	EPI						
		CED	BW	WW	YW	MK	TM	CEM	HP	PG30	ST	DOC	DMI	YG	CW	REA	MB	FT				ADG	RFI				
ACC	0.24	-1.3	85	144	27	70	9	8.86	-0.82	15	13		0.12	53	0.33	0.67	0.02								99.14		
Rank	25	30	10	4	15	5	15	25	85	50	25		>95	10	90	4	90								2		
Sire	EPD	17	-3.7	82	143	30	72	9	8.81	-1.13	16	15		0.18	57	0.21	0.72	0.02								102.10	
ACC	0.50	0.54	0.52	0.51	0.26		0.30	0.09	0.06	0.34	0.42		0.35	0.44	0.42	0.40	0.38										
Dam	EPD	12	0.9	86	145	25	67	9	8.91	-0.52	14	11		0.06	48	0.44	0.62	0.02								95.39	
ACC	0.31	0.41	0.35	0.34	0.30		0.27	0.11	0.07	0.19	0.25		0.22	0.29	0.27	0.20	0.20										

Balancer Non-Parent Percentile Ranking

	BW	WW	YW	REA	IMF	FAT
Adj	75	648				
Ratio	98.0	104				

TEHAMA TAHOE B767 -- AMAN17817177

SIRE: VALS 88 TAHOE 015 POKEMAN -- AMGV1560742

VALS 88 RAINFALL 015 OF 8124 -- AMGV1499650

S A V RAINFALL 6846 -- AMAN18578963

DAM: VALS 88 RAINFALL 1921J OF 921 -- AMGV1525720

VALS 88 LEGEND 921 OF 2121 -- AMGV1475038

Deep, soggy mid April yearling with top rankings in 12 categories

Herdbook Data for Registry No. - AMGV1619711

Bull

Listing No. - 26



Name: VALS 88 SITZ DOMAIN 2187

Tattoo: VALS 2187M

GV%: PC6.3

6.3% GV | 93.8% AN

Color: Black

HPS: Polled

Breeder: 9528 - THE 88 RANCH

DOB: 2/24/2024

Subject Animal	EPD	Expected Progeny Differences											Intake and Carcass						Index Values								
		Growth and Maternal																	\$Cow	FPI	EPI						
		CED	BW	WW	YW	MK	TM	CEM	HP	PG30	ST	DOC	DMI	YG	CW	REA	MB	FT				ADG	RFI				
ACC	0.24	-1.6	89	152	28	72	9				0.06	0.13		0.13	0.17	0.15	0.15	0.14								105.38	
Rank	35	25	4	2	10	3	15				85	4		>95	3	70	1	>95								1	
Sire	EPD	13	-2.7	88	166	30	74	7			7	18		0.27	60	0.40	1.03	0.07								111.98	
ACC	0.80	0.86	0.82	0.69	0.32		0.47			0.08	0.39		0.36	0.47	0.37	0.58	0.46										
Dam	EPD	15	-1.2	82	132	26	67	11	0.27	1.61	16	13	-0.003	0.13	56	0.46	0.63	0.03	0.030	0.000					104.45	95.82	154.12
ACC	0.23	0.38	0.33	0.30	0.23		0.23	0.04	0.01	0.11	0.18		0.02	0.17	0.21	0.20	0.18	0.16	0.02	0.01							

Balancer Non-Parent Percentile Ranking

	BW	WW	YW	REA	IMF	FAT
Adj	72	738				
Ratio	98.0	106				

SITZ LOGO 8148 -- AMAN19087441

SIRE: SITZ DOMAIN 12371 -- AMAN19974072

SITZ EMMA E 129 -- AMAN19362603

POSS RAWHIDE -- AMAN19416968

DAM: VALS 88 RAWHIDE 2187 -- AMGV1575740

VALS 88 CINCH 1-87Y -- AMGV1201894

Proud of the Sitz Domain sons in this year's offering! Superior EPD numbers with the eye appeal & sound structure to go with those great numbers!



Herdbook Data for Registry No. - AMGV1591092

Bull

Listing No. - 29



Name: VALS 88 RAWHIDE 5146 ANGUS

Tattoo: VALS 5146L

GV%: AN0

100% AN

Color: Black

HPS: Polled

Breeder: 9528 - THE 88 RANCH

DOB: 3/4/2023

Subject Animal	EPD	Expected Progeny Differences											Intake and Carcass							Index Values				
		Growth and Maternal																						
		CED	BW	WW	YW	MK	TM	CEM	HP	PG30	ST	DOC	DMI	YG	CW	REA	MB	FT	ADG	RFI	\$Cow	FPI	EPI	
	ACC	0.23	-1.8	90	147	24	68	11	0.99	1.83	14	14		0.17	63	0.50	0.76	0.04					104.03	
	Rank	25	20	3	3	40	10	3	95	20	60	15		>95	2	60	2	>95					1	
Sire	EPD	17	-2.2	100	159	24	74	12	-2.03	1.23	14	16	-0.008	0.23	74	0.62	0.86	0.06	0.039	-0.010	93.54	113.61	188.24	
	ACC	0.93	0.91	0.91	0.91	0.61		0.79	0.18	0.01	0.24	0.87	0.04	0.50	0.59	0.55	0.76	0.68	0.04	0.02				
Dam	EPD	12	-1.1	84	140	24	64	10	4.00	2.43	13	12		0.11	55	0.41	0.67	0.02					97.01	
	ACC	0.23	0.30	0.27	0.27	0.30		0.22	0.11	0.10	0.18	0.21		0.20	0.25	0.24	0.21	0.20						

Balancer Non-Parent Percentile Ranking

	BW	WW	YW	REA	IMF	FAT
Adj	80	620				
Ratio	98.0	98				



POSS MAVERICK -- AMAN18962396

SIRE: POSS RAWHIDE -- AMAN19416968

POSS BLUEBLOOD 6502 -- AMAN18631711

V A R DISCOVERY 2240 -- AMAN17262835

DAM: GVC JUSTINA C146 -- AMAN18334242

GVC CRYSTAL Z11 -- AMAN17624035

A 2 yr. old whose Full brother sold for \$7,000 on Green Valley's sale. Mother is a deep, moderate, powerful cow! There are only two 2 yr old bulls being offered this year.

Herdbook Data for Registry No. - AMGV1619169

Bull

Listing No. - 30



Name: VALS 88 STUN GUN 8112

Tattoo: VALS 8112M

GV%: BA37.5

37.5% GV | 62.5% AN

Color: Black

HPS: Polled

Breeder: 9528 - THE 88 RANCH

DOB: 4/24/2024

Subject Animal	EPD	Expected Progeny Differences											Intake and Carcass							Index Values				
		Growth and Maternal																						
		CED	BW	WW	YW	MK	TM	CEM	HP	PG30	ST	DOC	DMI	YG	CW	REA	MB	FT	ADG	RFI	\$Cow	FPI	EPI	
	ACC	0.21	-0.5	68	110	26	60	6	4.47	2.14	20	13		0.09	42	0.29	0.37	0.02					79.44	
	Rank	65	50	70	60	25	50	65	75	20	3	30		95	35	90	50	90					70	
Sire	EPD	14	-1.8	68	108	26	60	6	3.69	1.99	20	11		0.15	43	0.16	0.43	0.03					82.42	
	ACC	0.51	0.59	0.55	0.53	0.25		0.30	0.10	0.09	0.33	0.41		0.34	0.44	0.39	0.39	0.36						
Dam	EPD	11	0.4	69	112	25	60	6	5.25	2.29	19	14		0.02	43	0.45	0.32	0.01					77.54	
	ACC	0.26	0.40	0.31	0.30	0.25		0.16	0.01	0.01	0.14	0.12		0.15	0.21	0.20	0.12	0.11						

Balancer Non-Parent Percentile Ranking

	BW	WW	YW	REA	IMF	FAT
Adj	82	603				
Ratio	104.0	96				

MUSGRAVE 316 STUNNER -- AMAN18467508

SIRE: VALS 88 STUN GUN 11 -- AMGV1526087

VALS 88 PR GRANITE 11Y -- AMGV1201914

VALS 88 CAPITAL UPTOWN 122 -- AMGV1336310

DAM: VALS 88 UPTOWN 8112 OF I-87 -- AMGV1445354

VALS 88 CINCH 1-87Y -- AMGV1201894

The youngest bull being offered as a yearling or will get carried over and offered as a 2 yr. old next year. We used a full brother last season. Lots of length, depth, and eye appeal!

Herdbook Data for Registry No. - AMGV1619170

Bull

Listing No. - 31



Name: VALS 88 STUN GUN 8174

Tattoo: VALS 8174M

GV%: PC18.8

18.8% GV | 81.3% AN

Color: Black

HPS: Polled

Breeder: 9528 - THE 88 RANCH

DOB: 4/13/2024

Subject Animal	Expected Progeny Differences												Intake and Carcass						Index Values					
	Growth and Maternal																							
	EPD	CED	BW	WW	YW	MK	TM	CEM	HP	PG30	ST	DOC	DMI	YG	CW	REA	MB	FT	ADG	RFI	\$Cow	FPI	EPI	
EPD	14	-1.7	71	124	22	58	8	2.86	1.01	16	12		0.09	44	0.38	0.82	0.03					94.50		
ACC	0.26	0.33	0.29	0.27	0.15		0.19	0.04	0.03	0.11	0.18		0.17	0.20	0.19	0.20	0.18							
Rank	35	25	55	20	60	60	25	85	40	35	50		>95	20	80	1	>95					10		
Sire	EPD	14	-1.8	68	108	26	60	6	3.69	1.99	20	11		0.15	43	0.16	0.43	0.03					82.42	
ACC	0.51	0.59	0.55	0.53	0.25		0.30	0.10	0.09	0.33	0.41		0.34	0.44	0.39	0.39	0.36							
Dam	EPD	13	-0.3	81	150	19	60	10	2.04	0.03	12	13		0.02	49	0.67	1.21	0.03					109.21	
ACC	0.62	0.52	0.45	0.39	0.39		0.50	0.07	0.05	0.17	0.44		0.35	0.41	0.37	0.60	0.47							

Balancer Non-Parent Percentile Ranking

	BW	WW	YW	REA	IMF	FAT
Adj	74	653				
Ratio	93.0	93				



SIRE: MUSGRAVE 316 STUNNER -- AMAN18467508

VALS 88 STUN GUN 11 -- AMGV1526087

VALS 88 PR GRANITE 11Y -- AMGV1201914

MGR TREASURE -- AMAN18156972

DAM: DEER VALLEY RITA 8174 -- AMAN19181812

EF RITA 3244 -- AMAN17625557

A very correct, beautiful bull that catches your eye. He is a moderate 5 frame score. One of the youngest bulls in the offering.

Herdbook Data for Registry No. - AMGV1619172

Bull

Listing No. - 32



Name: VALS 88 J54 REBEL 9988

Tattoo: VALS 9988M

GV%: PC76.4

76.4% GV | 21.8% AN | 1.7% AR | 0.1% SA

Color: Black

HPS: Polled

Breeder: 9528 - THE 88 RANCH

DOB: 3/11/2024

Subject Animal	Expected Progeny Differences												Intake and Carcass						Index Values						
	Growth and Maternal																								
	EPD	CED	BW	WW	YW	MK	TM	CEM	HP	PG30	ST	DOC	DMI	YG	CW	REA	MB	FT	ADG	RFI	\$Cow	FPI	EPI		
EPD	11	1.1	70	101	26	61	8	9.67	2.46	17	13		-0.19	29	0.72	0.33	-0.02						77.61		
ACC	0.20	0.34	0.27	0.25	0.12		0.12	0.01	0.01	0.11	0.06		0.12	0.17	0.15	0.10	0.10								
Rank	75	80	60	70	25	40	25	15	20	20	25		30	65	20	50	40						65		
Sire	EPD	10	-0.1	65	91	33	65	6	11.54	2.64	17	15		-0.24	25	0.86	0.32	-0.01						76.35	
ACC	0.50	0.59	0.53	0.51	0.18		0.24	0.01	0.01	0.34	0.12		0.31	0.41	0.38	0.32	0.30								
Dam	EPD	12	1.9	67	101	20	53	10	7.80	2.27	16	11		-0.14	29	0.51	0.34	-0.03						75.17	
ACC	0.21	0.40	0.26	0.24	0.25		0.19	0.01	0.01	0.13	0.14		0.13	0.18	0.17	0.12	0.11								

Balancer Non-Parent Percentile Ranking

	BW	WW	YW	REA	IMF	FAT
Adj	85	689				
Ratio	107.0	99				



SIRE: DDGR REBEL 28G -- AMGV1446793

HAND REBEL J54 -- AMGV1531747

HAND LADY HEISMAN F27 -- AMGV1531413

JKGF D108 ACCELERATE -- AMGV1354081

DAM: VALS 88 ACCELERATE 9988 OF 611 -- AMGV1469392

VALS 88 BIZMAC 611 OF 11 -- AMGV1372125

Highest percentage Gelbvieh bull in the pen with a little extra leather under the chin, but a well balanced bull in his makeup!

Reference Sires

Herdbook Data for Registry No. - AMGV1439792



Name: 88 CONFIDENTIAL 601

Tattoo: VALS 601F

GV%: BA35.9375

35.938% GV | 63.281% AN | 0.781% SM

Color: Black (Homo - D)

HPS: Polled (Homo - D)

Breeder: 9528 - THE 88 RANCH

DOB: 3/3/2018

Subject Animal	Expected Progeny Differences												Intake and Carcass						Index Values				
	Growth and Maternal																						
	EPD	CED	BW	WW	YW	MK	TM	CEM	HP	PG30	ST	DOC	DMI	YG	CW	REA	MB	FT	ADG	RFI	\$Cow	FPI	EPI
EPD	19	-2.2	73	112	33	69	10	8.53	1.53	12	12		-0.16	49	0.96	0.67	-0.01				95.17		
ACC	0.54	0.62	0.57	0.55	0.27		0.32	0.09	0.06	0.34	0.41		0.35	0.43	0.42	0.40	0.38						
Rank	10	25	50	55	1	15	15	20	20	75	50		20	20	3	10	40				10		
Sire	EPD	16	-2.0	84	148	31	72	5	7.73	0.30	13	14	-0.013	0.04	63	0.93	0.73	0.05	0.044	0.005	97.14	102.19	180.63
ACC	0.93	0.91	0.91	0.91	0.84		0.89	0.46	0.28	0.45	0.90		0.07	0.57	0.70	0.64	0.86	0.83	0.06	0.05			
Dam	EPD	19	-2.0	65	94	35	68	11	9.33	2.75	18	9		-0.26	25	0.73	0.52	-0.04				86.83	
ACC	0.37	0.48	0.41	0.40	0.36		0.28	0.13	0.13	0.24	0.24		0.23	0.32	0.30	0.20	0.18						

Balancer Active Sire Percentile Ranking

	BW	WW	YW	REA	IMF	FAT
Adj	83	697				
Ratio	98.9	109				



CONNEALY CONFIDENCE 0100 -- AMAN16761479

SIRE: CONNEALY CONFIDENCE PLUS -- AMAN17585576

ELBANNA OF CONANGA 1209 -- AMAN17029025

VRT LAZY TV SAM U451 -- AMGV1079233

DAM: VALS 88 SAM 601 OF 920 -- AMGV1372206

DLW MS COWMAKER 920W OF 301 -- AMGV1118794

Herdbook Data for Registry No. - AMGV1526165



Name: 88 CC2 506 DETOUR

Tattoo: VALS 506J

GV%: PC21.9

21.9% GV | 78.1% AN

Color: Black (Homo - D)

HPS: Polled

Breeder: 9528 - THE 88 RANCH

DOB: 3/19/2021

Subject Animal	Expected Progeny Differences												Intake and Carcass						Index Values				
	Growth and Maternal																						
	EPD	CED	BW	WW	YW	MK	TM	CEM	HP	PG30	ST	DOC	DMI	YG	CW	REA	MB	FT	ADG	RFI	\$Cow	FPI	EPI
EPD	15	-2.5	74	116	21	58	7	5.65	1.78	13	14		0.02	50	0.54	0.45	0.01				87.52		
ACC	0.47	0.55	0.49	0.46	0.19		0.23	0.01	0.01	0.29	0.13		0.31	0.41	0.38	0.32	0.31						
Rank	30	15	40	35	65	55	45	50	25	70	20		90	15	60	25	85				20		
Sire	EPD	12	0.3	86	139	17	60	6	6.30	0.14	7	16	-0.04	59	0.81	0.48	0.01				91.64		
ACC	0.56	0.64	0.59	0.56	0.31		0.34	0.09	0.06	0.33	0.40		0.35	0.44	0.42	0.37	0.35						
Dam	EPD	17	-3.3	63	97	24	56	8	5.00	3.43	18	11		0.04	38	0.31	0.37	0.01				80.43	
ACC	0.31	0.46	0.38	0.37	0.38		0.27	0.11	0.10	0.23	0.18		0.21	0.28	0.27	0.19	0.17						

Balancer Active Sire Percentile Ranking

	BW	WW	YW	REA	IMF	FAT
Adj	86	698				
Ratio	100.0	104				



CONNEALY CONFIDENCE PLUS -- AMAN17585576

SIRE: VALS 88 CONFIDENCE PLUS 602 -- AMGV1439804

VALS 88 CASH 602 OF 478 -- AMGV1372213

CONNEALY CAPITALIST 028 -- AMAN16752262

DAM: VALS 88 CAPITAL 506 OF 106 -- AMGV1336301

VALS 88 CINCH 106Y -- AMGV1201849

Reference Sires

Herdbook Data for Registry No. - AMAN17817177



Name: TEHAMA TAHOE B767

Tattoo: B767

American Angus Association Registration # 17817177

GV%:

100% AN

Color:

HPS: Polled

Breeder: Unknown

DOB: 9/6/2013

Subject Animal	EPD	Expected Progeny Differences											Intake and Carcass							Index Values			
		Growth and Maternal																		\$Cow	FPI	EPI	
		CED	BW	WW	YW	MK	TM	CEM	HP	PG30	ST	DOC	DMI	YG	CW	REA	MB	FT	ADG				RFI
ACC	16	-2.5	92	158	28	76	7	10.24	-1.05	18	14	-0.059	0.15	59	0.42	0.79	0.03	0.166	-0.143	126.44	108.59	277.45	
Rank	0.95	0.94	0.93	0.92	0.77		0.86	0.45	0.26	0.57	0.91	0.32	0.61	0.81	0.77	0.85	0.82	0.28	0.20				
	20	15	3	2	15	2	45	20	80	20	20	15	>95	4	75	2	95	2	5	25	1	1	
Sire	EPD	11	0.4	76	130	37	75	6	2.83	-0.62	16	14	-0.065	0.16	45	0.16	0.89	0.03	0.118	-0.033	103.86	97.01	217.21
	ACC	0.73	0.85	0.82	0.78	0.65	0.67	0.28	0.26	0.24	0.55	0.14	0.46	0.56	0.51	0.70	0.60	0.12	0.10				
Dam	EPD	16	-2.8	74	120	24	62	9	8.00	-0.19	15	12	-0.070	0.15	44	0.25	0.55	0.04	0.066	-0.061	101.57	90.85	173.32
	ACC	0.30	0.40	0.39	0.41	0.38	0.30	0.29	0.27	0.30	0.31	0.19	0.29	0.35	0.34	0.31	0.30	0.18	0.16				

Balancer Active Sire Percentile Ranking

	BW	WW	YW	REA	IMF	FAT
Adj	0					
Ratio	*					

SITZ UPWARD 307R -- AMAN14963730

SIRE: TEHAMA UPWARD Y238 -- AMAN16760354

TEHAMA ELITE BLACKBIRD T735 -- AMAN15700660

S A V FINAL ANSWER 0035 -- AMAN13592905

DAM: TEHAMA MARY BLACKBIRD Y684 -- AMAN16876258

TEHAMA MARY BLACKBIRD T073 -- AMAN16018979

Herdbook Data for Registry No. - AMAN20132642



Name: CONNEALY COMMERCE

Tattoo: 023R

American Angus Association Registration # 20132642

GV%:

100% AN

Color:

HPS: Polled

Breeder: Unknown

Subject Animal	EPD	Expected Progeny Differences											Intake and Carcass							Index Values			
		Growth and Maternal																		\$Cow	FPI	EPI	
		CED	BW	WW	YW	MK	TM	CEM	HP	PG30	ST	DOC	DMI	YG	CW	REA	MB	FT	ADG				RFI
ACC	20	-1.3	111	181	27	82	18	3.87	1.00	11	13		0.12	78	0.88	0.95	0.05					123.09	
Rank	0.88	0.91	0.88	0.68	0.34		0.50	0.01	0.01	0.14	0.67		0.41	0.50	0.43	0.66	0.54					1	
	3	30	1	1	20	1	1	70	40	85	30		>95	1	15	1	>95						
Sire	EPD	17	-1.0	92	156	26	72	11	2.69	0.32	10	13	0.016	-0.01	72	1.03	1.12	0.02	0.085	0.002	80.06	115.41	213.10
	ACC	0.90	0.90	0.90	0.88	0.63	0.73	0.07	0.06	0.19	0.87	0.03	0.55	0.70	0.66	0.80	0.71	0.03	0.03				
Dam	EPD	16	-0.9	94	154	26	74	13	5.04	1.69	12	14		0.18	67	0.51	0.51	0.04				99.53	
	ACC	0.29	0.29	0.28	0.28	0.17	0.24	0.01	0.01	0.09	0.28		0.21	0.25	0.24	0.26	0.23						

Balancer Active Sire Percentile Ranking

	BW	WW	YW	REA	IMF	FAT
Adj	0					
Ratio	*					

G A R SUNRISE -- AMAN16933958

SIRE: G A R SUNBEAM -- AMAN18636166

G A R INGENUITY 3132 -- AMAN17353925

CONNEALY CADE -- AMAN18555914

DAM: AVIRA OF CONANGA 814R -- AMAN19515454

AVIE OF CONANGA 624P -- AMAN18801506

Reference Sires

Herdbook Data for Registry No. - AMAN20024449



Name: YON FLAGSHIP

Tattoo: J974

American Angus Association Registration # 20024449

GV%:
Color:

100% AN
HPS: Polled

Breeder: Unknown

Subject Animal	Expected Progeny Differences												Intake and Carcass						Index Values				
	Growth and Maternal																						
	CED	BW	WW	YW	MK	TM	CEM	HP	PG30	ST	DOC	DMI	YG	CW	REA	MB	FT	ADG	RFI	\$Cow	FPI	EPI	
EPD	21	-3.4	104	189	26	78	17	2.64	0.82	11	17		0.18	74	0.58	1.27	0.04				130.97		
ACC	0.81	0.85	0.79	0.54	0.36		0.52	0.01	0.01	0.15	0.58		0.40	0.49	0.42	0.64	0.53						
Rank	2	10	1	1	30	1	1	80	40	85	3		>95	1	50	1	>95				1		
Sire	EPD	17	-1.9	87	145	24	66	15	3.46	0.81	11	13		0.06	78	1.03	1.55	0.04				123.54	
ACC	0.95	0.91	0.74	0.91	0.85		0.90	0.01	0.01	0.09	0.89		0.60	0.77	0.74	0.86	0.79						
Dam	EPD	18	-2.8	85	155	26	71	11	1.82	0.84	12	16		0.23	60	0.25	0.79	0.04				105.19	
ACC	0.30	0.32	0.38	0.40	0.34		0.26	0.08	0.05	0.19	0.29		0.26	0.32	0.30	0.29	0.27						

Balancer Active Sire Percentile Ranking

	BW	WW	YW	REA	IMF	FAT
Adj	0					
Ratio	*					

G A R SURE FIRE 6404 -- AMAN17965471

SIRE: GB FIREBALL 672 -- AMAN18690054

GB ANTICIPATION 432 -- AMAN18054344

SYDGEN ENHANCE -- AMAN18170041

DAM: YON QUEEN G1085 -- AMAN19493362

YON QUEEN C27 -- AMAN18146504

Herdbook Data for Registry No. - AMAN19974072



Name: SITZ DOMAIN 12371

Tattoo: 12371

American Angus Association Registration # 19974072

GV%:
Color:

100% AN
HPS: Polled

Breeder: Unknown

Subject Animal	Expected Progeny Differences												Intake and Carcass						Index Values				
	Growth and Maternal																						
	CED	BW	WW	YW	MK	TM	CEM	HP	PG30	ST	DOC	DMI	YG	CW	REA	MB	FT	ADG	RFI	\$Cow	FPI	EPI	
EPD	13	-2.7	88	166	30	74	7			7	18		0.27	60	0.40	1.03	0.07				111.98		
ACC	0.80	0.86	0.82	0.69	0.32		0.47			0.08	0.39		0.36	0.47	0.37	0.58	0.46						
Rank	50	15	10	1	10	3	45			>95	1		>95	4	75	1	>95				1		
Sire	EPD	14	-2.6	99	164	26	76	1			7	0		0.34	61	0.26	0.80	0.08				111.01	
ACC	0.88	0.85	0.85	0.85	0.60		0.74			0.08	0.65		0.49	0.61	0.55	0.72	0.61						
Dam	EPD	14	-2.6	75	136	25	62	11			6	13		0.21	53	0.36	0.87	0.06				99.21	
ACC	0.26	0.26	0.24	0.23	0.15		0.21			0.09	0.18		0.19	0.23	0.21	0.24	0.21						

Balancer Active Sire Percentile Ranking

	BW	WW	YW	REA	IMF	FAT
Adj	0					
Ratio	*					

SITZ LOGO 12964 -- AMAN17746620

SIRE: SITZ LOGO 8148 -- AMAN19087441

SITZ BARBARAMERE NELL 912 -- AMAN17163596

POSS ACHIEVEMENT -- AMAN18631344

DAM: SITZ EMMA E 129 -- AMAN19362603

SITZ EMMA E 5177 -- AMAN18990730

Herdbook Data for Registry No. - AMGV1526087



Name: 88 STUN GUN 11

Tattoo: VALS 11J

GV%: BA37.5

37.5% GV | 62.5% AN

Color: Black (Homo - D)

HPS: Polled

Breeder: 9528 - THE 88 RANCH

DOB: 3/3/2021

Subject Animal	EPD	Expected Progeny Differences										Intake and Carcass						Index Values					
		Growth and Maternal																					
		CED	BW	WW	YW	MK	TM	CEM	HP	PG30	ST	DOC	DMI	YG	CW	REA	MB	FT	ADG	RFI	\$Cow	FPI	EPI
	ACC	0.51	0.59	0.55	0.53	0.25	0.30	0.10	0.09	0.33	0.41		0.15	43	0.16	0.43	0.03				82.42		
	Rank	45	30	65	60	25	45	65	70	20	5	70	>95	35	95	35	90				50		
Sire	EPD	12	-1.7	86	142	32	75	1	-3.00	2.78	13	13	0.173	0.39	72	0.36	0.77	0.10	0.011	0.181	77.70	101.11	132.63
	ACC	0.95	0.92	0.83	0.91	0.90	0.91	0.53	0.41	0.48	0.89	0.56	0.59	0.74	0.70	0.85	0.79	0.51	0.43				
Dam	EPD	13	0.1	62	90	20	51	9	10.38	1.20	18	13		-0.07	22	0.25	0.19	-0.02			70.04		
	ACC	0.35	0.51	0.39	0.36	0.41	0.31	0.13	0.13	0.25	0.29		0.22	0.30	0.28	0.19	0.17						

Balancer Active Sire Percentile Ranking

	BW	WW	YW	REA	IMF	FAT
Adj	85	700				
Ratio	99.0	103				



SIRE: LD CAPITALIST 316 -- AMAN17666102
MUSGRAVE 316 STUNNER -- AMAN18467508
MCATL BLACKBIRD 831-1378 -- AMAN16896985
DCSF POST ROCK GRANITE 200P2 -- AMGV930426
DAM: VALS 88 PR GRANITE 11Y -- AMGV1201914
DDGR CENTERFOLD 6W -- AMGV1119945

Herdbook Data for Registry No. - AMGV1526131



Name: 88 RED MISSLE

Tattoo: VALS 2121J

GV%: BA48.828125

48.828% GV | 50.781% AN | 0.391% XX

Color: Red

HPS: Polled (Homo - D)

Breeder: 9528 - THE 88 RANCH

DOB: 3/13/2021

Subject Animal	EPD	Expected Progeny Differences										Intake and Carcass						Index Values					
		Growth and Maternal																					
		CED	BW	WW	YW	MK	TM	CEM	HP	PG30	ST	DOC	DMI	YG	CW	REA	MB	FT	ADG	RFI	\$Cow	FPI	EPI
	ACC	0.45	0.53	0.44	0.42	0.16	0.22	0.01	0.01	0.28	0.09		0.29	0.36	0.35	0.31	0.29				71.07		
	Rank	95	80	80	90	75	85	80	70	20	55	50	70	80	85	55	55				95		
Sire	EPD	12	1.9	82	123	24	64	7	4.92	0.83	10	12		0.03	41	0.34	0.30	0.00			82.30		
	ACC	0.36	0.63	0.55	0.47	0.30	0.31	0.11	0.10	0.19	0.21		0.25	0.34	0.33	0.20	0.20						
Dam	EPD	6	2.4	64	92	17	49	4	2.62	3.06	17	12		-0.11	25	0.35	0.12	-0.03			64.81		
	ACC	0.27	0.46	0.33	0.32	0.35	0.25	0.10	0.10	0.22	0.15		0.16	0.22	0.21	0.12	0.12						

Balancer Active Sire Percentile Ranking

	BW	WW	YW	REA	IMF	FAT
Adj	91	658				
Ratio	106.0	97				



SIRE: CONNEALY BLACK GRANITE -- AMAN17028963
VALS 88 BLK GRANITE 4035 -- AMGV1372458
VALS 88 GOOD NIGHT 4035 -- AMGV1305936
ALS FREEDOMS REFLECTION -- AMGV693867
DAM: VALS 88 FREE REFLECTION 2121Z -- AMGV1235071
VALS 88 EXT 212M 012 BALANCER -- AMGV816354

Reference Sires

Herdbook Data for Registry No. - AMGV1560742



Name: 88 TAHOE 015 POKEMAN

Tattoo: VALS 015K

GV%: PC7.9

7.9% GV | 92.2% AN

Color: Black (Homo - D)

HPS: Polled

Breeder: 9528 - THE 88 RANCH

DOB: 2/23/2022

Subject Animal	Expected Progeny Differences												Intake and Carcass							Index Values			
	Growth and Maternal																						
	EPD	CED	BW	WW	YW	MK	TM	CEM	HP	PG30	ST	DOC	DMI	YG	CW	REA	MB	FT	ADG	RFI	\$Cow	FPI	EPI
ACC	0.50	0.54	0.52	0.51	0.26		0.30	0.09	0.06	0.34	0.42		0.35	0.44	0.42	0.40	0.38					102.10	
Rank	15	5	15	5	10	5	20	25	80	35	10		>95	10	95	3	90					2	
Sire	EPD	16	-2.5	92	158	28	76	7	10.24	-1.05	18	14	-0.059	0.15	59	0.42	0.79	0.03	0.166	-0.143	126.44	108.59	277.45
ACC	0.95	0.94	0.93	0.92	0.77		0.86	0.45	0.26	0.57	0.91		0.32	0.61	0.81	0.77	0.85	0.82	0.28	0.20			
Dam	EPD	17	-4.0	73	123	31	68	12	7.39	-1.21	14	13		0.12	49	0.35	0.59	0.03					94.11
ACC	0.32	0.43	0.37	0.36	0.33		0.27	0.11	0.07	0.19	0.24		0.22	0.28	0.27	0.20	0.20						

Balancer Active Sire Percentile Ranking

	BW	WW	YW	REA	IMF	FAT
Adj	79	646	1201			
Ratio	100.0	100	103			



SIRE: TEHAMA UPWARD Y238 -- AMAN16760354

TEHAMA TAHOE B767 -- AMAN17817177

TEHAMA MARY BLACKBIRD Y684 -- AMAN16876258

S A V RAINFALL 6846 -- AMAN18578963

DAM: VALS 88 RAINFALL 015 OF 8124 -- AMGV1499650

VALS 88 LD CAPITALIST 8124 OF 124 -- AMGV1445331

Herdbook Data for Registry No. - AMAN19416968



Name: POSS RAWHIDE

Tattoo: 9513

American Angus Association Registration # 19416968

GV%:

100% AN

Color:

HPS: Polled

Breeder: Unknown

Subject Animal	Expected Progeny Differences												Intake and Carcass							Index Values			
	Growth and Maternal																						
	EPD	CED	BW	WW	YW	MK	TM	CEM	HP	PG30	ST	DOC	DMI	YG	CW	REA	MB	FT	ADG	RFI	\$Cow	FPI	EPI
ACC	0.93	0.91	0.91	0.91	0.61		0.79	0.18	0.01	0.24	0.87		0.04	0.50	0.59	0.55	0.76	0.68	0.04	0.02			
Rank	15	20	1	1	45	3	3	>95	40	60	5		40	>95	1	45	1	>95	15	40	75	1	4
Sire	EPD	10	-0.8	92	151	34	80	4	-0.18	0.34	14	15	0.002	0.24	67	0.48	1.22	0.06	0.017	0.013	89.26	114.94	164.19
ACC	0.87	0.90	0.90	0.90	0.82		0.84	0.21	0.01	0.29	0.81		0.02	0.54	0.66	0.62	0.78	0.71	0.01	0.01			
Dam	EPD	16	-2.0	94	153	22	69	10	-0.85	2.13	13	14	-0.010	0.22	90	0.81	0.76	0.06	0.045	-0.019	86.29	107.00	186.59
ACC	0.42	0.41	0.40	0.40	0.29		0.37	0.23	0.06	0.12	0.42		0.04	0.31	0.37	0.34	0.42	0.38	0.03	0.03			

Balancer Active Sire Percentile Ranking

	BW	WW	YW	REA	IMF	FAT
Adj	0					
Ratio	*					

SIRE: BASIN PAYWEIGHT 1682 -- AMAN17038724

POSS MAVERICK -- AMAN18962396

POSS PRIDE 5163 -- AMAN18348384

POSS EASY IMPACT 0119 -- AMAN16750909

DAM: POSS BLUEBLOOD 6502 -- AMAN18631711

POSS BLUEBLOOD 920 -- AMAN16482622

Reference Sires

Herdbook Data for Registry No. - AMGV1531747



Name: REBEL J54

Tattoo: HAND J54

GV%: PB83.28984375

83.29% GV | 13.19% AN | 3.374% AR | 0.146% SA

Color: Black

HPS: Polled

Breeder: 11952 - HANDEL FARMS

DOB: 3/26/2021

Subject Animal	Expected Progeny Differences												Intake and Carcass						Index Values				
	Growth and Maternal																						
	EPD	CED	BW	WW	YW	MK	TM	CEM	HP	PG30	ST	DOC	DMI	YG	CW	REA	MB	FT	ADG	RFI	\$Cow	FPI	EPI
Subject Animal	EPD	10	-0.1	65	91	33	65	6	11.54	2.64	17	15		-0.24	25	0.86	0.32	-0.01				76.35	
	ACC	0.50	0.59	0.53	0.51	0.18		0.24	0.01	0.01	0.34	0.12		0.31	0.41	0.38	0.32	0.30					
	Rank	80	50	70	80	3	20	55	15	15	30	10		50	65	20	25	90				55	
Sire	EPD	11	2.5	92	135	34	80	7	15.87	3.54	15	18	-0.023	-0.28	48	1.07	0.55	-0.04	-0.057	0.014	126.92	96.24	102.15
	ACC	0.55	0.61	0.58	0.59	0.27		0.34	0.13	0.13	0.38	0.42	0.22	0.36	0.47	0.44	0.41	0.37	0.21	0.19			
Dam	EPD	11	-1.1	58	84	32	62	7	7.22	1.74	12	12		-0.22	11	0.55	0.25	-0.02				72.21	
	ACC	0.28	0.32	0.33	0.31	0.25		0.18	0.01	0.01	0.23	0.12		0.16	0.24	0.20	0.10	0.10					

GV Active Sire Percentile Ranking

	BW	WW	YW	REA	IMF	FAT
Adj	87	667	1229			
Ratio	112.0	117	109			



CCRO CAROLINA LEVERAGE 3214A -- AMGV1281559

SIRE: DDGR REBEL 28G -- AMGV1446793

DDGR 47E -- AMGV1382318

LRSF LRL HEISMAN D202 -- AMGV1353879

DAM: HAND LADY HEISMAN F27 -- AMGV1531413

HAND AFLAME D247 -- AMGV1470667