

# For Sale by Private Treaty

Offered By



**THE 88 RANCH**  
**51089 871 RD**  
**ORCHARD, NE 68764-6445**  
**88ranch@gmail.com**  
**www.88ranch.com**

*All comments, breeding information and calf-at-side notations are provided by the seller. and are wholly the responsibility of the buyer to verify. AGA offers no guarantee of any such claims.*

Herdbook Data for Registry No. - AMGV1589632

Bull

Listing No. - 1



Name: VALS 88 REBEL 00

Tattoo: VALS 00L

GV%: BA55.7

55.7% GV | 42.5% AN | 1.7% AR | 0.1% SA

Color: Black (Homo - D)

HPS: Polled

Breeder: 9528 - THE 88 RANCH

DOB: 3/27/2023

Subject Animal	EPD	Expected Progeny Differences											Intake and Carcass						Index Values				
		Growth and Maternal																					
		CED	BW	WW	YW	MK	TM	CEM	HP	PG30	ST	DOC	DMI	YG	CW	REA	MB	FT	ADG	RFI	\$Cow	FPI	EPI
	ACC	0.19	0.32	0.25	0.24	0.10		0.11	0.01	0.01	0.09	0.06		0.11	0.15	0.15	0.09	0.09				83.26	
	Rank	80	40	50	55	25	35	45	25	15	45	10		15	50	10	40	40				45	
Sire	EPD	8	0.8	66	96	31	64	5	10.96	2.46	16	16		-0.28	23	0.93	0.31	-0.02				75.42	
	ACC	0.49	0.56	0.51	0.50	0.16		0.23	0.01	0.01	0.30	0.12		0.30	0.39	0.35	0.31	0.30					
Dam	EPD	14	-2.0	75	118	20	57	8	4.68	1.88	14	13		-0.06	48	0.71	0.47	0.00				88.11	
	ACC	0.20	0.36	0.27	0.25	0.21		0.17	0.01	0.01	0.10	0.11		0.12	0.17	0.16	0.08	0.08					

Balancer Non-Parent Percentile Ranking

	BW	WW	YW	REA	IMF	FAT
Adj	80	645				
Ratio	99.0	103				



DDGR REBEL 28G -- AMGV1446793

SIRE: HAND REBEL J54 -- AMGV1531747

HAND LADY HEISMAN F27 -- AMGV1531413

VALS 88 CONFIDENCE PLUS 602 -- AMGV1439804

DAM: VALS 88 CC2 00 OF D26 -- AMGV1499424

VALS 88 BIZMAC D26 OF T26 -- AMGV1372136

One to put in the front pasture! Higher % Gelbvieh. Keep daughters!

Herdbook Data for Registry No. - AMGV1561072

Bull

Listing No. - 2



Name: VALS 88 FREEWAY 02

Tattoo: VALS 02K

GV%: BA35.9

35.9% GV | 63.3% AN | 0.8% SM

Color: Black

HPS: Polled

Breeder: 9528 - THE 88 RANCH

DOB: 5/5/2022

Subject Animal	EPD	Expected Progeny Differences											Intake and Carcass						Index Values				
		Growth and Maternal																					
		CED	BW	WW	YW	MK	TM	CEM	HP	PG30	ST	DOC	DMI	YG	CW	REA	MB	FT	ADG	RFI	\$Cow	FPI	EPI
	ACC	0.26	0.35	0.25	0.24	0.16		0.18	0.01	0.01	0.11	0.14		0.15	0.19	0.19	0.13	0.12				82.68	
	Rank	10	15	65	60	15	40	3	20	70	45	50		60	65	80	60	40				45	
Sire	EPD	20	-4.6	62	93	27	57	12	6.98	0.61	17	13		-0.10	25	0.36	0.20	-0.02				78.80	
	ACC	0.56	0.62	0.55	0.53	0.27		0.32	0.11	0.09	0.33	0.40		0.35	0.44	0.41	0.40	0.36					
Dam	EPD	15	-2.2	72	116	28	63	10	10.16	-0.42	14	11		-0.01	39	0.41	0.43	0.00				86.83	
	ACC	0.25	0.39	0.31	0.31	0.26		0.25	0.10	0.06	0.17	0.21		0.19	0.24	0.23	0.20	0.19					

Balancer Non-Parent Percentile Ranking

	BW	WW	YW	REA	IMF	FAT
Adj	80	588				
Ratio	105.0	*				

CONNEALY BLACK GRANITE -- AMAN17028963

SIRE: VALS 88 BLK GRANITE 302 -- AMGV1372413

VALS 88 MS 43U 302 OF DLW920 -- AMGV1266277

S A V RAINFALL 6846 -- AMAN18578963

DAM: VALS 88 RAINFALL 02 OF 302 -- AMGV1499670

VALS 88 MS 43U 302 OF DLW920 -- AMGV1266277

One of the last Freeways to sell! Safe for heifers.

Herdbook Data for Registry No. - AMGV1589972

Bull

Listing No. - 3



Name: VALS 88 DETOUR 011

Tattoo: VALS 011L

GV%: BA36

36% GV | 64.1% AN

Color: Black

HPS: Polled

Breeder: 9528 - THE 88 RANCH

DOB: 3/11/2023

Subject Animal	EPD	Expected Progeny Differences											Intake and Carcass						Index Values				
		Growth and Maternal																					
		CED	BW	WW	YW	MK	TM	CEM	HP	PG30	ST	DOC	DMI	YG	CW	REA	MB	FT	ADG	RFI	\$Cow	FPI	EPI
	ACC	0.17	0.32	0.26	0.23	0.10		0.11	0.01	0.01	0.10	0.06		0.11	0.15	0.14	0.09	0.09					
	Rank	25	25	50	50	70	65	30	45	40	45	25		75	30	60	55	60					45
Sire	EPD	15	-2.5	75	117	21	58	7	4.58	1.80	13	13		0.00	53	0.62	0.46	0.01					88.54
	ACC	0.46	0.54	0.48	0.45	0.17		0.21	0.01	0.01	0.28	0.13		0.30	0.38	0.36	0.31	0.30					
Dam	EPD	13	0.7	74	110	21	58	8	8.15	1.01	16	12		-0.03	34	0.36	0.23	-0.01					77.56
	ACC	0.19	0.37	0.29	0.26	0.21		0.19	0.01	0.01	0.14	0.12		0.12	0.18	0.16	0.10	0.08					

Balancer Non-Parent Percentile Ranking

	BW	WW	YW	REA	IMF	FAT
Adj	75	606				
Ratio	93.0	97				



VALS 88 CONFIDENCE PLUS 602 -- AMGV1439804

SIRE: VALS 88 CC2 506 DETOUR -- AMGV1526165

VALS 88 CAPITAL 506 OF 106 -- AMGV1336301

VALS 88 BLK GRANITE 4035 -- AMGV1372458

DAM: VALS 88 GRANITE ROAD 011 OF 11 -- AMGV1499825

VALS 88 PR GRANITE 11Y -- AMGV1201914

Moderate framed, stylish bull from a 2nd calf heifer. Multiple generations of black, but not DNA tested.

Herdbook Data for Registry No. - AMGV1560742

Bull

Listing No. - 4



Name: VALS 88 TAHOE 015 POKEMAN

Tattoo: VALS 015K

GV%: PC7.9

7.9% GV | 92.2% AN

Color: Black

HPS: Polled

Breeder: 9528 - THE 88 RANCH

DOB: 2/23/2022

Subject Animal	EPD	Expected Progeny Differences											Intake and Carcass						Index Values					
		Growth and Maternal																						
		CED	BW	WW	YW	MK	TM	CEM	HP	PG30	ST	DOC	DMI	YG	CW	REA	MB	FT	ADG	RFI	\$Cow	FPI	EPI	
	ACC	0.27	0.37	0.38	0.43	0.26		0.25	0.07	0.05	0.17	0.21		0.21	0.27	0.25	0.21	0.21					100.71	
	Rank	15	10	10	3	1	1	15	25	65	15	25		>95	2	75	3	>95					1	
Sire	EPD	16	-2.5	93	158	32	79	6	9.34	0.02	20	14		-0.084	0.14	62	0.48	0.80	0.03	0.194	-0.182	134.88	109.69	298.28
	ACC	0.94	0.93	0.93	0.92	0.75		0.85	0.33	0.21	0.49	0.91		0.31	0.59	0.73	0.71	0.84	0.79	0.27	0.19			
Dam	EPD	16	-3.5	74	122	32	69	11	7.24	-0.80	16	12		0.13	53	0.38	0.58	0.03					93.48	
	ACC	0.27	0.40	0.34	0.34	0.31		0.27	0.10	0.06	0.17	0.20		0.20	0.25	0.24	0.20	0.20						

Balancer Non-Parent Percentile Ranking

	BW	WW	YW	REA	IMF	FAT
Adj	75	646	1201			
Ratio	100.0	100	103			

TEHAMA UPWARD Y238 -- AMAN16760354

SIRE: TEHAMA TAHOE B767 -- AMAN17817177

TEHAMA MARY BLACKBIRD Y684 -- AMAN16876258

S A V RAINFALL 6846 -- AMAN18578963

DAM: VALS 88 RAINFALL 015 OF 8124 -- AMGV1499650

VALS 88 LD CAPITALIST 8124 OF 124 -- AMGV1445331

I've really liked the Tahoe sons and love his daughters! Rainfall dam.



Herdbook Data for Registry No. - AMGV1589971

Bull

Listing No. - 7



Name: VALS 88 DETOUR 063

Tattoo: VALS 063L

GV%: BA29.3

29.3% GV | 70.7% AN

Color: Black (Homo - D)

HPS: Polled

Breeder: 9528 - THE 88 RANCH

DOB: 3/18/2023

Subject Animal	Expected Progeny Differences												Intake and Carcass						Index Values			
	Growth and Maternal																					
	EPD	CED	BW	WW	YW	MK	TM	CEM	HP	PG30	ST	DOC	DMI	YG	CW	REA	MB	FT	ADG	RFI	\$Cow	FPI
EPD	15	-1.7	75	116	24	61	8	5.13	1.25	14	12		0.00	46	0.51	0.38	0.00				86.05	
ACC	0.17	0.33	0.26	0.24	0.10		0.11	0.01	0.01	0.09	0.05		0.11	0.15	0.14	0.08	0.08					
Rank	25	25	35	40	40	40	30	60	40	60	50		80	20	50	45	60				30	
EPD	15	-2.5	75	117	21	58	7	4.58	1.80	13	13		0.00	53	0.62	0.46	0.01				88.54	
ACC	0.46	0.54	0.48	0.45	0.17		0.21	0.01	0.01	0.28	0.13		0.30	0.38	0.36	0.31	0.30					
EPD	13	0.6	79	120	26	66	7	5.68	0.69	14	12		0.00	40	0.40	0.30	0.00				82.99	
ACC	0.15	0.36	0.27	0.25	0.20		0.15	0.01	0.01	0.10	0.08		0.10	0.14	0.14	0.06	0.07					

Balancer Non-Parent Percentile Ranking

	BW	WW	YW	REA	IMF	FAT
Adj	74	686				
Ratio	93.0	101				



VALS 88 CONFIDENCE PLUS 602 -- AMGV1439804

SIRE: VALS 88 CC2 506 DETOUR -- AMGV1526165

VALS 88 CAPITAL 506 OF 106 -- AMGV1336301

VALS 88 BLK GRANITE 4035 -- AMGV1372458

DAM: VALS 88 GRANITE ROAD 063 OF 631 -- AMGV1499832

VALS 88 ACE 631 OF 316 -- AMGV1372419

Dam had a great bull in last year's pen and again this year! This is her 2nd calf. Calving ease with performance & carcass.

Herdbook Data for Registry No. - AMGV1589970

Bull

Listing No. - 8



Name: VALS 88 REBEL 091

Tattoo: VALS 091L

GV%: BA54.1

54.1% GV | 44.1% AN | 1.7% AR | 0.1% SA

Color: Black (Homo - D)

HPS: Polled

Breeder: 9528 - THE 88 RANCH

DOB: 3/10/2023

Subject Animal	Expected Progeny Differences												Intake and Carcass						Index Values			
	Growth and Maternal																					
	EPD	CED	BW	WW	YW	MK	TM	CEM	HP	PG30	ST	DOC	DMI	YG	CW	REA	MB	FT	ADG	RFI	\$Cow	FPI
EPD	9	1.5	74	111	28	65	6	8.92	1.91	16	14		-0.09	34	0.61	0.37	0.00				80.14	
ACC	0.19	0.32	0.27	0.25	0.10		0.12	0.01	0.01	0.10	0.05		0.11	0.15	0.14	0.09	0.09					
Rank	95	90	40	50	10	20	65	20	15	30	10		45	55	30	45	60				60	
EPD	8	0.8	66	96	31	64	5	10.96	2.46	16	16		-0.28	23	0.93	0.31	-0.02				75.42	
ACC	0.49	0.56	0.51	0.50	0.16		0.23	0.01	0.01	0.30	0.12		0.30	0.39	0.35	0.31	0.30					
EPD	12	1.6	79	122	25	64	8	6.89	1.36	16	13		0.10	44	0.27	0.42	0.02				84.05	
ACC	0.20	0.37	0.29	0.27	0.20		0.18	0.01	0.01	0.14	0.11		0.13	0.18	0.16	0.10	0.09					

Balancer Non-Parent Percentile Ranking

	BW	WW	YW	REA	IMF	FAT
Adj	88	633				
Ratio	109.0	101				



DDGR REBEL 28G -- AMGV1446793

SIRE: HAND REBEL J54 -- AMGV1531747

HAND LADY HEISMAN F27 -- AMGV1531413

VALS 88 BLK GRANITE 4035 -- AMGV1372458

DAM: VALS 88 GRANITE ROAD 091 OF 791 -- AMGV1499810

VALS 88 PAY WEIGHT 791 OF 88 -- AMGV1412537

Another nice looking, higher % Gelbvieh to keep daughters out of.



Herdbook Data for Registry No. - AMGV1589734

Bull

Listing No. - 11



Name: VALS 88 PLUS ONE 204

Tattoo: VALS 204L

GV%: BA25

25% GV | 75% AN

Color: Black (Homo - D)

HPS: Polled

Breeder: 9528 - THE 88 RANCH

DOB: 3/11/2023

Subject Animal	EPD	Expected Progeny Differences											Intake and Carcass						Index Values				
		Growth and Maternal																					
		CED	BW	WW	YW	MK	TM	CEM	HP	PG30	ST	DOC	DMI	YG	CW	REA	MB	FT	ADG	RFI	\$Cow	FPI	EPI
	14	0.5	74	123	18	55	8	2.12	1.15	12	11		0.00	38	0.47	0.61	0.01					87.91	
	ACC	0.22	0.37	0.32	0.30	0.23		0.21	0.05	0.01	0.13	0.17		0.17	0.22	0.20	0.17	0.16					
	Rank	35	70	40	25	90	75	30	90	40	85	70		80	45	60	10	80					20
Sire	EPD	19	-2.9	70	128	22	58	8	0.02	1.64	9	13		0.02	40	0.57	0.91	0.03					99.85
	ACC	0.93	0.91	0.91	0.91	0.76		0.86	0.22	0.05	0.27	0.86		0.55	0.69	0.62	0.81	0.75					
Dam	EPD	9	3.5	76	117	13	52	8	4.22	0.66	15	9		-0.03	37	0.38	0.31	-0.01					75.98
	ACC	0.22	0.46	0.32	0.29	0.34		0.23	0.01	0.01	0.21	0.12		0.13	0.18	0.16	0.13	0.10					

Balancer Non-Parent Percentile Ranking

	BW	WW	YW	REA	IMF	FAT
Adj	88	649				
Ratio	107.0	95				



CONNEALY CONFIDENCE PLUS -- AMAN17585576

SIRE: E&E PLUS ONE -- AMAN19196960

E&E LADY 1023 PRECISION 936 -- AMAN16454439

VRT LAZY TV CINCHA P546 -- AMGV903059

DAM: VALS 88 CINCH 204Z 42 -- AMGV1235082

VALS 88 CINDY 42P -- AMGV910191

Good Marbling & Feedlot performance numbers! Homo black

Herdbook Data for Registry No. - AMGV1592226

Bull

Listing No. - 12



Name: VALS 88 RAWHIDE 2-06

Tattoo: VALS 206L

GV%: PC23.4

23.4% GV | 75.8% AN | 0.8% SM

Color: Black

HPS: Polled

Breeder: 9528 - THE 88 RANCH

DOB: 3/2/2023

Subject Animal	EPD	Expected Progeny Differences											Intake and Carcass						Index Values				
		Growth and Maternal																					
		CED	BW	WW	YW	MK	TM	CEM	HP	PG30	ST	DOC	DMI	YG	CW	REA	MB	FT	ADG	RFI	\$Cow	FPI	EPI
	12	-0.2	83	126	20	62	7	3.18	1.76	15	13		0.13	57	0.44	0.61	0.03					92.82	
	ACC	0.20	0.24	0.22	0.21	0.16		0.18	0.03	0.03	0.07	0.18		0.14	0.16	0.15	0.17	0.16					
	Rank	60	50	10	15	75	30	40	85	20	45	25		>95	3	75	10	>95					10
Sire	EPD	17	-2.1	102	162	30	81	11	1.21	0.89	13	16		0.32	86	0.46	0.90	0.06					115.52
	ACC	0.92	0.91	0.91	0.89	0.40		0.61	0.01	0.01	0.10	0.84		0.46	0.55	0.49	0.71	0.62					
Dam	EPD	8	1.8	64	91	10	42	4	5.15	2.62	16	11	0.004	-0.06	28	0.41	0.32	0.00	-0.029	0.006	110.05	69.99	72.82
	ACC	0.26	0.46	0.34	0.32	0.34		0.26	0.13	0.12	0.21	0.20		0.12	0.18	0.23	0.22	0.20	0.18	0.11	0.10		

Balancer Non-Parent Percentile Ranking

	BW	WW	YW	REA	IMF	FAT
Adj	77	685				
Ratio	95.0	101				



POSS MAVERICK -- AMAN18962396

SIRE: POSS RAWHIDE -- AMAN19416968

POSS BLUEBLOOD 6502 -- AMAN18631711

CTR SANDMAN 6523S -- AMGV1030628

DAM: DLW MS SANDMAN 06Z OF 730 -- AMGV1223164

DLW MS 338 730T -- AMGV1038826

Catches your eye in the pen! Deep, thick, soggy! Sadly, his dam injured her udder, so he was raised by another cow.

Herdbook Data for Registry No. - AMGV1589739

Bull

Listing No. - 13



Name: VALS 88 RAWHIDE 302

Tattoo: VALS 302L

GV%: BA35.9

35.9% GV | 63.3% AN | 0.8% SM

Color: Black (Homo - D)

HPS: Polled

Breeder: 9528 - THE 88 RANCH

DOB: 3/11/2023

Sire Verified , 100K

Expected Progeny Differences

		Growth and Maternal											Intake and Carcass							Index Values			
		CED	BW	WW	YW	MK	TM	CEM	HP	PG30	ST	DOC	DMI	YG	CW	REA	MB	FT	ADG	RFI	\$Cow	FPI	EPI
Subject Animal	EPD	17	-2.9	84	129	28	71	11	3.80	1.14	15	12		0.06	56	0.53	0.51	0.01				96.79	
	ACC	0.24	0.37	0.32	0.30	0.14		0.19	0.03	0.03	0.09	0.20		0.17	0.21	0.19	0.19	0.17					
	Rank	10	10	10	15	10	4	3	70	40	45	50		95	5	50	20	80					
Sire	EPD	17	-2.1	102	162	30	81	11	1.21	0.89	13	16		0.32	86	0.46	0.90	0.06				115.52	
	ACC	0.92	0.91	0.91	0.89	0.40		0.61	0.01	0.01	0.10	0.84		0.46	0.55	0.49	0.71	0.62					
Dam	EPD	18	-3.7	61	89	27	58	10	6.38	1.39	18	9		-0.20	24	0.57	0.12	-0.03				74.88	
	ACC	0.31	0.47	0.37	0.34	0.35		0.26	0.12	0.11	0.19	0.23		0.19	0.23	0.22	0.21	0.18					

Balancer Non-Parent Percentile Ranking

	BW	WW	YW	REA	IMF	FAT
Adj	79	729				
Ratio	94.0	107				



POSS MAVERICK -- AMAN18962396

SIRE: POSS RAWHIDE -- AMAN19416968

POSS BLUEBLOOD 6502 -- AMAN18631711

JKGF 43U -- AMGV1063542

DAM: VALS 88 MS 43U 302 OF DLW920 -- AMGV1266277

DLW MS COWMAKER 920W OF 301 -- AMGV1118794

Elite individual! Mother is a Dam of Distinction!

Herdbook Data for Registry No. - AMGV1589741

Bull

Listing No. - 14



Name: VALS 88 RAWHIDE 338

Tattoo: VALS 338L

GV%: BA25

25% GV | 68.8% AN | 6.3% AR

Color: Black

HPS: Polled

Breeder: 9528 - THE 88 RANCH

DOB: 3/11/2023

Expected Progeny Differences

		Growth and Maternal											Intake and Carcass							Index Values			
		CED	BW	WW	YW	MK	TM	CEM	HP	PG30	ST	DOC	DMI	YG	CW	REA	MB	FT	ADG	RFI	\$Cow	FPI	EPI
Subject Animal	EPD	13	0.3	85	132	26	68	8	2.09	0.73	14	14		0.13	57	0.39	0.60	0.02				93.90	
	ACC	0.21	0.37	0.31	0.29	0.15		0.18	0.01	0.01	0.09	0.17		0.15	0.20	0.16	0.16	0.14					
	Rank	50	65	10	15	25	10	30	90	40	60	10		>95	4	75	10	90					10
Sire	EPD	17	-2.1	102	162	30	81	11	1.21	0.89	13	16		0.32	86	0.46	0.90	0.06				115.52	
	ACC	0.92	0.91	0.91	0.89	0.40		0.61	0.01	0.01	0.10	0.84		0.46	0.55	0.49	0.71	0.62					
Dam	EPD	13	0.5	68	101	22	56	8	2.96	0.57	16	13	-0.003	-0.05	30	0.35	0.31	-0.01	-0.022	0.001	102.35	76.29	88.40
	ACC	0.20	0.45	0.32	0.29	0.34		0.22	0.01	0.01	0.19	0.11	0.03	0.13	0.19	0.16	0.12	0.11	0.03	0.02			

Balancer Non-Parent Percentile Ranking

	BW	WW	YW	REA	IMF	FAT
Adj	94	660				
Ratio	112.0	97				



POSS MAVERICK -- AMAN18962396

SIRE: POSS RAWHIDE -- AMAN19416968

POSS BLUEBLOOD 6502 -- AMAN18631711

VRT LAZY TV CINCHA P546 -- AMGV903059

DAM: VALS 88 CINCHA 338 OF 6538 -- AMGV1266283

LDJ MS RENEE S538 -- AMGV986389

Top 25% in WW, YW, Milk, TM, CW, Marb, FPI



Herdbook Data for Registry No. - AMGV1589746

Bull

Listing No. - 15



Name: VALS 88 RAWHIDE 402

Tattoo: VALS 402L

GV%: BA25

25% GV | 75% AN

Color: Black (Homo - D)

HPS: Polled

Breeder: 9528 - THE 88 RANCH

DOB: 3/8/2023

Sire Verified , 100K

		Expected Progeny Differences											Intake and Carcass						Index Values				
		Growth and Maternal																					
		CED	BW	WW	YW	MK	TM	CEM	HP	PG30	ST	DOC	DMI	YG	CW	REA	MB	FT	ADG	RFI	\$Cow	FPI	EPI
Subject Animal	EPD	11	1.2	98	155	27	76	7	4.47	2.45	14	15		0.09	70	0.68	0.54	0.02				99.48	
	ACC	0.45	0.49	0.46	0.45	0.15		0.24	0.03	0.03	0.27	0.39		0.28	0.36	0.29	0.38	0.35					
	Rank	80	85	1	1	15	1	45	70	15	60	4		>95	1	20	15	90				2	
Sire	EPD	17	-2.1	102	162	30	81	11	1.21	0.89	13	16		0.32	86	0.46	0.90	0.06				115.52	
	ACC	0.92	0.91	0.91	0.89	0.40		0.61	0.01	0.01	0.10	0.84		0.46	0.55	0.49	0.71	0.62					
Dam	EPD	11	0.8	77	119	24	63	7	7.73	4.00	19	13		-0.07	40	0.62	0.23	0.00				79.33	
	ACC	0.31	0.47	0.36	0.35	0.36		0.26	0.13	0.12	0.24	0.24		0.22	0.28	0.27	0.20	0.20					

Balancer Non-Parent Percentile Ranking

	BW	WW	YW	REA	IMF	FAT
Adj	105	785				
Ratio	126.0	115				



POSS MAVERICK -- AMAN18962396

SIRE: POSS RAWHIDE -- AMAN19416968

POSS BLUEBLOOD 6502 -- AMAN18631711

S A V BISMARCK 5682 -- AMAN15109865

DAM: VALS 88 MS. BISMARCK 402 -- AMGV1305538

VALS 88 PR GRANITE 122Y -- AMGV1201858

Terrific bull! Long made Rawhide with lots of performance to use on cows.

Herdbook Data for Registry No. - AMGV1589747

Bull

Listing No. - 16



Name: VALS 88 RAWHIDE 460

Tattoo: VALS 460L

GV%: BA25

25% GV | 75% AN

Color: Black (Homo - D)

HPS: Polled

Breeder: 9528 - THE 88 RANCH

DOB: 3/2/2023

		Expected Progeny Differences											Intake and Carcass						Index Values				
		Growth and Maternal																					
		CED	BW	WW	YW	MK	TM	CEM	HP	PG30	ST	DOC	DMI	YG	CW	REA	MB	FT	ADG	RFI	\$Cow	FPI	EPI
Subject Animal	EPD	18	-3.8	84	130	24	67	10	0.27	0.51	12	14		0.10	63	0.58	0.62	0.02				100.19	
	ACC	0.24	0.37	0.32	0.31	0.15		0.20	0.02	0.02	0.07	0.21		0.17	0.21	0.19	0.18	0.17					
	Rank	5	4	10	15	40	15	10	>95	40	85	10		>95	2	40	10	90				2	
Sire	EPD	17	-2.1	102	162	30	81	11	1.21	0.89	13	16		0.32	86	0.46	0.90	0.06				115.52	
	ACC	0.92	0.91	0.91	0.89	0.40		0.61	0.01	0.01	0.10	0.84		0.46	0.55	0.49	0.71	0.62					
Dam	EPD	18	-5.6	59	89	19	49	10	-0.66	0.12	12	13		-0.12	35	0.61	0.34	-0.01				80.56	
	ACC	0.30	0.45	0.36	0.34	0.34		0.26	0.09	0.09	0.13	0.25		0.20	0.27	0.25	0.20	0.18					

Balancer Non-Parent Percentile Ranking

	BW	WW	YW	REA	IMF	FAT
Adj	77	700				
Ratio	92.0	103				



POSS MAVERICK -- AMAN18962396

SIRE: POSS RAWHIDE -- AMAN19416968

POSS BLUEBLOOD 6502 -- AMAN18631711

CONNELLY CAVALRY 1149 -- AMAN17028951

DAM: VALS 88 MS. CALVALRY 460 -- AMGV1305913

VALS 88 LANDMARK 60S -- AMGV1162858

Great choice to use on heifers! Big time curve bender!!

Herdbook Data for Registry No. - AMGV1590929

Bull

Listing No. - 17



Name: VALS 88 COWBOY UP 508

Tattoo: VALS 508L

GV%: BA31.3

31.3% GV | 68.8% AN

Color: Black

HPS: Scurred

DOB: 3/2/2023

Breeder: 9528 - THE 88 RANCH

Subject Animal	EPD	Expected Progeny Differences											Intake and Carcass								Index Values		
		Growth and Maternal																			\$Cow	FPI	EPI
		CED	BW	WW	YW	MK	TM	CEM	HP	PG30	ST	DOC	DMI	YG	CW	REA	MB	FT	ADG	RFI			
	ACC	11	1.2	84	136	21	63	5	5.88	-1.92	15	10	0.015	0.05	38	0.13	0.27	-0.01	-0.004	0.004	97.45	83.75	133.50
	Rank	0.23	0.37	0.32	0.30	0.24		0.21	0.12	0.10	0.15	0.19	0.06	0.17	0.22	0.20	0.18	0.18	0.06	0.05			
		80	85	10	10	70	30	80	45	95	45	90	60	90	45	>95	70	40	55	65	75	40	30
Sire	EPD	15	3.1	91	160	17	64	4	9.36	-3.54	11	12	-0.008	0.14	50	0.09	0.33	0.00	0.001	0.001	98.93	91.04	164.06
	ACC	0.93	0.92	0.80	0.91	0.90		0.92	0.41	0.29	0.43	0.90	0.11	0.57	0.72	0.65	0.84	0.80	0.10	0.09			
		13	-0.3	70	104	26	61	9	2.40	-0.29	15	7	0.038	-0.05	29	0.24	0.21	-0.02	-0.010	0.007	95.91	76.64	95.50
	ACC	0.29	0.43	0.33	0.31	0.34		0.26	0.13	0.13	0.24	0.19	0.15	0.18	0.22	0.22	0.17	0.16	0.14	0.13			

Balancer Non-Parent Percentile Ranking

	BW	WW	YW	REA	IMF	FAT
Adj	95	694				
Ratio	114.0	102				



HA OUTSIDE 3008 -- AMAN17651088

SIRE: HA COWBOY UP 5405 -- AMAN18286467

HA BLACKCAP LADY 1602 -- AMAN17055741

CTR GOOD NIGHT 715T -- AMGV1086538

DAM: VALS 88 GOOD NIGHT 508 OF 3507 -- AMGV1336398

VALS 88 MS TANK 3507 OF 507 -- AMGV1266285

Top 10% WW & YW! Performance Bull! Mother is Dam of Merit.

Herdbook Data for Registry No. - AMGV1589750

Bull

Listing No. - 18



Name: VALS 88 RAWHIDE 518

Tattoo: VALS 518L

GV%: PC18.8

18.8% GV | 81.3% AN

Color: Black (Homo - D)

HPS: Polled

DOB: 3/9/2023

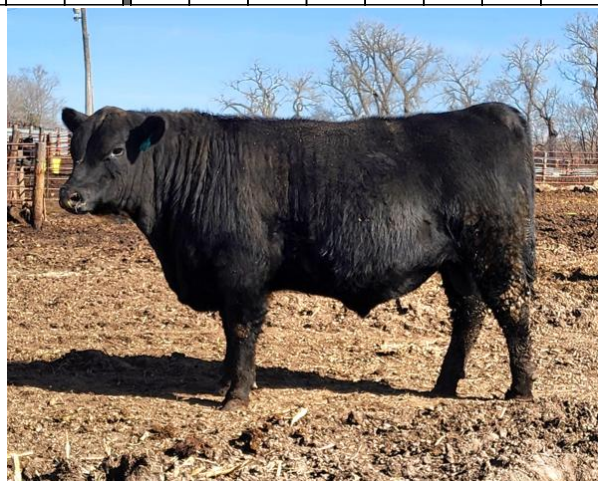
Breeder: 9528 - THE 88 RANCH

Sire Verified , 100K

Subject Animal	EPD	Expected Progeny Differences											Intake and Carcass								Index Values			
		Growth and Maternal																			\$Cow	FPI	EPI	
		CED	BW	WW	YW	MK	TM	CEM	HP	PG30	ST	DOC	DMI	YG	CW	REA	MB	FT	ADG	RFI				
	ACC	10	-0.3	95	145	32	79	6	1.34	0.26	16	15		0.17	76	0.64	0.87	0.04						106.81
	Rank	0.44	0.50	0.46	0.45	0.16		0.24	0.02	0.01	0.24	0.40		0.29	0.34	0.33	0.36	0.34						1
		85	50	1	2	1	1	60	95	65	35	4		>95	1	35	1	>95						
Sire	EPD	17	-2.1	102	162	30	81	11	1.21	0.89	13	16		0.32	86	0.46	0.90	0.06						115.52
	ACC	0.92	0.91	0.91	0.89	0.40		0.61	0.01	0.01	0.10	0.84		0.46	0.55	0.49	0.71	0.62						
		7	2.1	81	120	35	74	3	1.47	-0.38	18	12		-0.04	46	0.60	0.54	0.00						87.68
	ACC	0.29	0.45	0.35	0.34	0.35		0.26	0.07	0.05	0.17	0.21		0.16	0.22	0.20	0.17	0.15						

Balancer Non-Parent Percentile Ranking

	BW	WW	YW	REA	IMF	FAT
Adj	98	722				
Ratio	118.0	106				



POSS MAVERICK -- AMAN18962396

SIRE: POSS RAWHIDE -- AMAN19416968

POSS BLUEBLOOD 6502 -- AMAN18631711

Mohnen Long Haul 502 -- AMAN17286792

DAM: VALS 88 LONG HAUL 518 OF 2210 -- AMGV1336348

VALS 88 JAFF 2210 5738 -- AMGV1235095

One of my favorites! Deep, stout, performance bull!

Herdbook Data for Registry No. - AMGV1589969

Bull

Listing No. - 19



Name: VALS 88 TAHOE 708

Tattoo: VALS 708L

GV%: PC6.3

6.3% GV | 93.8% AN

Color: Black (Homo - D)

HPS: Polled

Breeder: 9528 - THE 88 RANCH

DOB: 2/27/2023

Sire Verified , 100K

Expected Progeny Differences

		Growth and Maternal											Intake and Carcass							Index Values				
		CED	BW	WW	YW	MK	TM	CEM	HP	PG30	ST	DOC	DMI	YG	CW	REA	MB	FT	ADG	RFI	\$Cow	FPI	EPI	
Subject Animal	EPD	13	0.0	94	152	32	78	7	8.87	1.17	19	13		0.18	60	0.40	0.69	0.04					102.92	
	ACC	0.24	0.38	0.34	0.32	0.27		0.23	0.10	0.08	0.17	0.21		0.20	0.26	0.24	0.20	0.19						
	Rank	45	55	1	1	1	1	40	20	40	10	25		>95	2	80	3	>95					1	
Sire	EPD	16	-2.5	93	158	32	79	6	9.34	0.02	20	14	-0.084	0.14	62	0.48	0.80	0.03	0.194	-0.182	134.88	109.69	298.28	
	ACC	0.94	0.93	0.93	0.92	0.75		0.85	0.33	0.21	0.49	0.91	0.31	0.59	0.73	0.71	0.84	0.79	0.27	0.19				
Dam	EPD	13	0.0	83	130	31	72	9	8.40	2.32	18	13		0.21	54	0.26	0.58	0.04					92.93	
	ACC	0.27	0.43	0.36	0.34	0.36		0.27	0.13	0.12	0.21	0.22		0.21	0.27	0.25	0.20	0.20						

Balancer Non-Parent Percentile Ranking

	BW	WW	YW	REA	IMF	FAT
Adj	93	736				
Ratio	114.0	108				



TEHAMA UPWARD Y238 -- AMAN16760354

SIRE: TEHAMA TAHOE B767 -- AMAN17817177

TEHAMA MARY BLACKBIRD Y684 -- AMAN16876258

BASIN PAYWEIGHT 1682 -- AMAN17038724

DAM: VALS 88 PAY WEIGHT 708 OF 4418 -- AMGV1412494

VALS 88 MS. CALVALRY 4418 OF 9-6 -- AMGV1305914

Unique Tahoe son! Elite rankings in over 7 traits! I really like the Tahoes!

Herdbook Data for Registry No. - AMGV1589733

Bull

Listing No. - 20



Name: VALS 88 STUN GUN 9-19

Tattoo: VALS 919L

GV%: BA43.8

43.8% GV | 56.3% AN

Color: Black (Homo - D)

HPS: Polled

Breeder: 9528 - THE 88 RANCH

DOB: 4/8/2023

Expected Progeny Differences

		Growth and Maternal											Intake and Carcass							Index Values				
		CED	BW	WW	YW	MK	TM	CEM	HP	PG30	ST	DOC	DMI	YG	CW	REA	MB	FT	ADG	RFI	\$Cow	FPI	EPI	
Subject Animal	EPD	12	-0.9	79	125	25	65	7	1.84	1.33	17	10		0.04	42	0.35	0.44	0.01					88.10	
	ACC	0.24	0.34	0.30	0.28	0.14		0.14	0.06	0.03	0.14	0.17		0.16	0.21	0.18	0.17	0.16						
	Rank	65	40	20	20	30	20	45	90	40	20	90		90	30	85	30	80					20	
Sire	EPD	14	-2.0	70	109	26	61	6	3.67	0.84	20	11		0.15	46	0.24	0.44	0.03					84.09	
	ACC	0.50	0.57	0.53	0.51	0.25		0.29	0.10	0.05	0.31	0.41		0.32	0.41	0.36	0.38	0.36						
Dam	EPD	9	-0.8	79	126	24	64	8	0.00	1.82	14	10		-0.06	32	0.39	0.45	-0.01					88.02	
	ACC	0.46	0.50	0.46	0.47	0.29		0.26	0.16	0.06	0.32	0.38		0.32	0.41	0.38	0.39	0.35						

Balancer Non-Parent Percentile Ranking

	BW	WW	YW	REA	IMF	FAT
Adj	85	748				
Ratio	103.0	110				



MUSGRAVE 316 STUNNER -- AMAN18467508

SIRE: VALS 88 STUN GUN 11 -- AMGV1526087

VALS 88 PR GRANITE 11Y -- AMGV1201914

MUSGRAVE AVIATOR -- AMAN17264774

DAM: DDGR PATSY 19G -- AMGV1446778

DDGR 375E -- AMGV1381397

Really nice bull! Will add performance!

Herdbook Data for Registry No. - AMGV1589936

Bull

Listing No. - 21



Name: VALS 88 GUARD RAIL 1128

Tattoo: VALS 1128L

GV%: PC12.5

12.5% GV | 87.5% AN

Color: Black

HPS: Polled

Breeder: 9528 - THE 88 RANCH

DOB: 2/21/2023

Subject Animal	EPD	Expected Progeny Differences											Intake and Carcass						Index Values			
		Growth and Maternal																				
		CED	BW	WW	YW	MK	TM	CEM	HP	PG30	ST	DOC	DMI	YG	CW	REA	MB	FT	ADG	RFI	\$Cow	FPI
	17	-2.6	76	128	30	68	10			14	12		0.04	41	0.43	0.76	0.02				98.86	
	ACC	0.25	0.36	0.30	0.28	0.15		0.20		0.10	0.18		0.16	0.21	0.18	0.19	0.17					
	Rank	10	10	30	15	4	10	5		60	45		95	25	75	2	95				2	
Sire	EPD	20	-5.2	82	135	36	76	11		16	13		0.14	47	0.30	0.83	0.03				108.21	
	ACC	0.79	0.82	0.78	0.55	0.35		0.50		0.17	0.56		0.41	0.49	0.42	0.66	0.56					
Dam	EPD	15	-1.2	69	118	24	59	9	3.27	1.73	11	12		-0.06	35	0.56	0.69	0.01				90.23
	ACC	0.24	0.38	0.31	0.30	0.26		0.25	0.05	0.01	0.16	0.20		0.18	0.23	0.20	0.19					

Balancer Non-Parent Percentile Ranking

	BW	WW	YW	REA	IMF	FAT
Adj	77	624				
Ratio	99.0	100				



TEHAMA TAHOE B767 -- AMAN1781777

SIRE: CONNEALY GUARD RAIL 923E -- AMAN19829215

QUEEN BABES OF CONANGA 870J -- AMAN19322216

E&E PLUS ONE -- AMAN19196960

DAM: VALS 88 PLUS ONE 1128 -- AMGV1526126

VALS 88 AVIATOR 8128 OF 635 -- AMGV1445351

Very good numbers on this prospect for heifers! Curve bender! Out of a 1st calf heifer.

Herdbook Data for Registry No. - AMGV1589723

Bull

Listing No. - 22



Name: VALS 88 RAWHIDE 1921

Tattoo: VALS 1921L

GV%: PC9.1

9.1% GV | 90.9% AN | 0.1% XX

Color: Black (Homo - D)

HPS: Polled

Breeder: 9528 - THE 88 RANCH

DOB: 2/24/2023

Sire Verified , 100K

Subject Animal	EPD	Expected Progeny Differences											Intake and Carcass						Index Values			
		Growth and Maternal																				
		CED	BW	WW	YW	MK	TM	CEM	HP	PG30	ST	DOC	DMI	YG	CW	REA	MB	FT	ADG	RFI	\$Cow	FPI
	18	-2.6	94	153	27	74	12	5.10	0.52	9	9		0.27	76	0.35	0.76	0.04				108.36	
	ACC	0.47	0.50	0.47	0.46	0.15		0.26	0.02	0.01	0.25	0.41		0.29	0.34	0.32	0.38	0.34				
	Rank	4	10	1	1	15	1	1	60	40	>95	95		>95	1	90	2	>95			1	
Sire	EPD	17	-2.1	102	162	30	81	11	1.21	0.89	13	16		0.32	86	0.46	0.90	0.06				115.52
	ACC	0.92	0.91	0.91	0.89	0.40		0.61	0.01	0.01	0.10	0.84		0.46	0.55	0.49	0.71	0.62				
Dam	EPD	13	0.6	86	143	24	67	9	8.99	0.14	12	10		0.11	54	0.33	0.61	0.01				95.06
	ACC	0.31	0.40	0.35	0.34	0.28		0.27	0.10	0.06	0.17	0.24		0.21	0.27	0.26	0.20	0.19				

Balancer Non-Parent Percentile Ranking

	BW	WW	YW	REA	IMF	FAT
Adj	64	640				
Ratio	83.0	102				



POSS MAVERICK -- AMAN18962396

SIRE: POSS RAWHIDE -- AMAN19416968

POSS BLUEBLOOD 6502 -- AMAN18631711

S A V RAINFALL 6846 -- AMAN18578963

DAM: VALS 88 RAINFALL 1921J OF 921 -- AMGV1525720

VALS 88 LEGEND 921 OF 2121 -- AMGV1475038

His top rankings in over 10 categories will "Wow" you along with his good looks! Elite bull out of a 1st calf heifer!

Herdbook Data for Registry No. - AMGV1589737

Bull

Listing No. - 23



Name: VALS 88 PLUS ONE 2727

Tattoo: VALS 2727L

GV%: BA25

25% GV | 75% AN

Color: Black (not Homo - D) HPS: Polled

Breeder: 9528 - THE 88 RANCH

DOB: 3/3/2023

Sire Verified , 100K

Expected Progeny Differences

		Growth and Maternal											Intake and Carcass							Index Values			
		CED	BW	WW	YW	MK	TM	CEM	HP	PG30	ST	DOC	DMI	YG	CW	REA	MB	FT	ADG	RFI	\$Cow	FPI	EPI
Subject Animal	EPD	18	-1.1	72	114	27	63	8	0.57	1.14	15	13		-0.02	34	0.38	0.74	0.00				93.80	
	ACC	0.43	0.49	0.45	0.45	0.22		0.26	0.05	0.01	0.27	0.38		0.28	0.34	0.32	0.35	0.32					
	Rank	5	35	50	45	15	30	30	95	40	45	25		75	55	80	2	60					10
Sire	EPD	19	-2.9	70	128	22	58	8	0.02	1.64	9	13		0.02	40	0.57	0.91	0.03				99.85	
	ACC	0.93	0.91	0.91	0.91	0.76		0.86	0.22	0.05	0.27	0.86		0.55	0.69	0.62	0.81	0.75					
Dam	EPD	16	-1.4	59	82	32	61	8	1.12	0.63	15	10		-0.04	24	0.22	0.26	-0.01				73.33	
	ACC	0.27	0.43	0.34	0.32	0.31		0.20	0.01	0.01	0.15	0.18		0.15	0.18	0.18	0.16	0.14					

Balancer Non-Parent Percentile Ranking

	BW	WW	YW	REA	IMF	FAT
Adj	82	730				
Ratio	100.0	107				



CONNEALY CONFIDENCE PLUS -- AMAN17585576

SIRE: E&E PLUS ONE -- AMAN19196960

E&E LADY 1023 PRECISION 936 -- AMAN16454439

MOHNEN DENSITY 600 -- AMAN16760155

DAM: VALS 88 MO DENSITY 2727 727 -- AMGV1235337

VALS 88 DYNAMIC 727T -- AMGV1043644

Really nice bull! Genomic Enhanced epds. Top 1/3rd of breed rankings in CED, BW, MK, TM, Marb, FPI. Carries a red gene.

Herdbook Data for Registry No. - AMGV1589748

Bull

Listing No. - 24



Name: VALS 88 RAWHIDE 4107

Tattoo: VALS 4107L

GV%: BA37.5

37.5% GV | 62.5% AN

Color: Black (Homo - D) HPS: Polled

Breeder: 9528 - THE 88 RANCH

DOB: 3/7/2023

Sire Verified , uLD

Expected Progeny Differences

		Growth and Maternal											Intake and Carcass							Index Values			
		CED	BW	WW	YW	MK	TM	CEM	HP	PG30	ST	DOC	DMI	YG	CW	REA	MB	FT	ADG	RFI	\$Cow	FPI	EPI
Subject Animal	EPD	16	-1.8	82	126	29	70	10	4.96	1.99	16	14		0.07	52	0.45	0.63	0.01				96.56	
	ACC	0.24	0.37	0.31	0.30	0.14		0.20	0.03	0.03	0.09	0.20		0.17	0.22	0.19	0.18	0.16					
	Rank	15	25	15	20	10	5	10	60	15	30	10		95	10	65	10	80					3
Sire	EPD	17	-2.1	102	162	30	81	11	1.21	0.89	13	16		0.32	86	0.46	0.90	0.06				115.52	
	ACC	0.92	0.91	0.91	0.89	0.40		0.61	0.01	0.01	0.10	0.84		0.46	0.55	0.49	0.71	0.62					
Dam	EPD	15	-1.8	65	96	29	62	9	8.72	3.08	19	13		-0.17	22	0.47	0.37	-0.03				80.54	
	ACC	0.31	0.47	0.35	0.34	0.36		0.28	0.13	0.13	0.22	0.24		0.20	0.27	0.25	0.19	0.17					

Balancer Non-Parent Percentile Ranking

	BW	WW	YW	REA	IMF	FAT
Adj	84	663				
Ratio	100.0	97				



POSS MAVERICK -- AMAN18962396

SIRE: POSS RAWHIDE -- AMAN19416968

POSS BLUEBLOOD 6502 -- AMAN18631711

VRT LAZY TV SAM U451 -- AMGV1079233

DAM: VALS 88 SAM 4107 -- AMGV1305530

VALS 88 ALLIANCE I87 107Y -- AMGV1201826

A curve bender out of a consistent dam! Ranks high in over 9 categories! Mother is Dam of Merit.

Herdbook Data for Registry No. - AMGV1591092

Bull

Listing No. - 25



Name: VALS 88 RAWHIDE 5146 ANGUS

Tattoo: VALS 5146L

GV%: AN0

100% AN

Color: Black

HPS: Polled

DOB: 3/4/2023

Breeder: 9528 - THE 88 RANCH

Subject Animal	EPD	Expected Progeny Differences											Intake and Carcass						Index Values				
		Growth and Maternal																					
		CED	BW	WW	YW	MK	TM	CEM	HP	PG30	ST	DOC	DMI	YG	CW	REA	MB	FT	ADG	RFI	\$Cow	FPI	EPI
	ACC	0.22	-1.6	91	148	27	71	10	2.22	1.73	13	14	0.23	69	0.39	0.79	0.04					105.07	
	Rank	25	25	2	2	15	3	5	90	20	75	10	>95	1	80	1	>95					1	
Sire	EPD	17	-2.1	102	162	30	81	11	1.21	0.89	13	16	0.32	86	0.46	0.90	0.06					115.52	
	ACC	0.92	0.91	0.91	0.89	0.40		0.61	0.01	0.01	0.10	0.84	0.46	0.55	0.49	0.71	0.62						
Dam	EPD	12	-0.6	84	141	24	64	9	3.23	2.58	13	12	0.13	54	0.34	0.69	0.02					97.00	
	ACC	0.22	0.28	0.26	0.26	0.26		0.21	0.15	0.13	0.17	0.20	0.19	0.23	0.22	0.19	0.20						

Balancer Non-Parent Percentile Ranking

	BW	WW	YW	REA	IMF	FAT
Adj	80	620				
Ratio	98.0	98				



POSS MAVERICK -- AMAN18962396

SIRE: POSS RAWHIDE -- AMAN19416968

POSS BLUEBLOOD 6502 -- AMAN18631711

V A R DISCOVERY 2240 -- AMAN17262835

DAM: GVC JUSTINA C146 -- AMAN18334242

GVC CRYSTAL Z11 -- AMAN17624035

Full brother sold for \$7,000 on Green Valley's sale. Mother is a deep, moderate, powerful cow!

Herdbook Data for Registry No. - AMGV1589759

Bull

Listing No. - 26



Name: VALS 88 RAWHIDE 8106

Tattoo: VALS 8106L

GV%: PC14.1

14.1% GV | 85.9% AN

Color: Black (Homo - D)

HPS: Polled

DOB: 3/1/2023

Breeder: 9528 - THE 88 RANCH

Subject Animal	EPD	Expected Progeny Differences											Intake and Carcass						Index Values				
		Growth and Maternal																					
		CED	BW	WW	YW	MK	TM	CEM	HP	PG30	ST	DOC	DMI	YG	CW	REA	MB	FT	ADG	RFI	\$Cow	FPI	EPI
	ACC	0.22	-0.7	94	150	28	75	8	3.33	-0.08	14	13	0.17	66	0.38	0.61	0.02					101.65	
	Rank	35	40	1	1	10	1	25	85	65	60	25	>95	1	85	10	95					1	
Sire	EPD	17	-2.1	102	162	30	81	11	1.21	0.89	13	16	0.32	86	0.46	0.90	0.06					115.52	
	ACC	0.92	0.91	0.91	0.89	0.40		0.61	0.01	0.01	0.10	0.84	0.46	0.55	0.49	0.71	0.62						
Dam	EPD	14	-0.4	76	123	26	64	7	5.46	-1.06	16	10	0.03	41	0.23	0.33	-0.01					83.61	
	ACC	0.24	0.42	0.32	0.31	0.32		0.25	0.09	0.06	0.19	0.17	0.18	0.23	0.21	0.18	0.17						

Balancer Non-Parent Percentile Ranking

	BW	WW	YW	REA	IMF	FAT
Adj	88	734				
Ratio	106.0	108				



POSS MAVERICK -- AMAN18962396

SIRE: POSS RAWHIDE -- AMAN19416968

POSS BLUEBLOOD 6502 -- AMAN18631711

HA COWBOY UP 5405 -- AMAN18286467

DAM: VALS 88 COW UP 8106 OF 106 -- AMGV1440460

VALS 88 CINCH 106Y -- AMGV1201849

Stood out all summer! Top rankings! Mother is Dam of Merit.

Herdbook Data for Registry No. - AMGV1589760

Bull

Listing No. - 27



Name: VALS 88 PLUS ONE 8111

Tattoo: VALS 8111L

GV%: BA31.3

31.3% GV | 68.8% AN

Color: Black

HPS: Polled

Breeder: 9528 - THE 88 RANCH

DOB: 3/1/2023

Subject Animal	Expected Progeny Differences												Intake and Carcass						Index Values				
	Growth and Maternal																						
	EPD	CED	BW	WW	YW	MK	TM	CEM	HP	PG30	ST	DOC	DMI	YG	CW	REA	MB	FT	ADG	RFI	\$Cow	FPI	EPI
EPD	18	-2.4	69	114	18	53	8	3.87	0.81	12	12		-0.07	34	0.56	0.49	0.01				86.84		
ACC	0.23	0.36	0.32	0.30	0.23		0.21	0.08	0.04	0.14	0.20		0.17	0.22	0.20	0.19	0.18						
Rank	5	15	65	45	90	85	30	70	40	85	50		55	55	40	20	80				25		
Sire	EPD	19	-2.9	70	128	22	58	8	0.02	1.64	9	13		0.02	40	0.57	0.91	0.03				99.85	
ACC	0.93	0.91	0.91	0.91	0.76		0.86	0.22	0.05	0.27	0.86		0.55	0.69	0.62	0.81	0.75						
Dam	EPD	15	-0.7	65	96	14	46	8	7.72	-0.02	15	12		-0.15	24	0.51	0.07	-0.02				69.96	
ACC	0.26	0.41	0.29	0.28	0.33		0.25	0.12	0.10	0.23	0.22		0.18	0.22	0.22	0.19	0.18						

Balancer Non-Parent Percentile Ranking

	BW	WW	YW	REA	IMF	FAT
Adj	77	638				
Ratio	92.0	94				



CONNEALY CONFIDENCE PLUS -- AMAN17585576

SIRE: E&E PLUS ONE -- AMAN19196960

E&E LADY 1023 PRECISION 936 -- AMAN16454439

EGL EGL LIFELINE B101 -- AMGV1298079

DAM: VALS 88 LIFELINE 8111 OF II -- AMGV1440461

VALS 88 PR GRANITE 11Y -- AMGV1201914

Can use on heifers. Lifeline was a National Champion bull a few years ago.

Herdbook Data for Registry No. - AMGV1589761

Bull

Listing No. - 28



Name: VALS 88 STUN GUN 8112

Tattoo: VALS 8112L

GV%: BA37.5

37.5% GV | 62.5% AN

Color: Black (Homo - D)

HPS: Polled

Breeder: 9528 - THE 88 RANCH

DOB: 3/24/2023

Subject Animal	Expected Progeny Differences												Intake and Carcass						Index Values				
	Growth and Maternal																						
	EPD	CED	BW	WW	YW	MK	TM	CEM	HP	PG30	ST	DOC	DMI	YG	CW	REA	MB	FT	ADG	RFI	\$Cow	FPI	EPI
EPD	11	0.7	79	124	25	65	5	4.55	1.41	20	12		0.09	50	0.38	0.37	0.02				84.04		
ACC	0.20	0.34	0.28	0.26	0.14		0.13	0.02	0.01	0.10	0.11		0.13	0.17	0.16	0.11	0.10						
Rank	80	75	20	25	30	20	80	60	40	3	50		>95	15	80	45	90				40		
Sire	EPD	14	-2.0	70	109	26	61	6	3.67	0.84	20	11		0.15	46	0.24	0.44	0.03				84.09	
ACC	0.50	0.57	0.53	0.51	0.25		0.29	0.10	0.05	0.31	0.41		0.32	0.41	0.36	0.38	0.36						
Dam	EPD	12	-0.1	74	117	24	61	7	5.42	1.97	20	14		0.04	47	0.42	0.31	0.01				80.57	
ACC	0.20	0.38	0.30	0.28	0.23		0.14	0.01	0.01	0.13	0.11		0.13	0.18	0.16	0.11	0.10						

Balancer Non-Parent Percentile Ranking

	BW	WW	YW	REA	IMF	FAT
Adj	98	736				
Ratio	118.0	108				



MUSGRAVE 316 STUNNER -- AMAN18467508

SIRE: VALS 88 STUN GUN 11 -- AMGV1526087

VALS 88 PR GRANITE 11Y -- AMGV1201914

VALS 88 CAPITAL UPTOWN 122 -- AMGV1336310

DAM: VALS 88 UPTOWN 8112 OF I-87 -- AMGV1445354

VALS 88 CINCH 1-87Y -- AMGV1201894

Long bodied & stylish out of a great cow!

Herdbook Data for Registry No. - AMGV1589938

Bull

Listing No. - 29



Name: VALS 88 RED PONCHO 8113

Tattoo: VALS 8113L

GV%: BA26.6

26.6% GV | 59.4% AN | 14% AR

Color: Red

HPS: Polled

Breeder: 9528 - THE 88 RANCH

DOB: 4/7/2023

Subject Animal	EPD	Expected Progeny Differences											Intake and Carcass						Index Values							
		Growth and Maternal																	\$Cow	FPI	EPI					
		CED	BW	WW	YW	MK	TM	CEM	HP	PG30	ST	DOC	DMI	YG	CW	REA	MB	FT				ADG	RFI			
	14	-1.3	74	113	26	63	7	7.75	2.11	16	12		0.05	43	0.49	0.45	0.03								86.32	
	ACC	0.14	0.32	0.19	0.18	0.13		0.11	0.03	0.01	0.11	0.08		0.09	0.12	0.10	0.08	0.08								
	Rank	35	30	40	45	25	30	45	25	15	30	50		90	30	55	30	>95							30	
Sire	EPD	15	-1.5	70	103	26	61	8	8.69	0.08	17	13		0.07	37	0.29	0.27	0.01								79.25
	ACC	0.16	0.20	0.17	0.17	0.12		0.12	0.06	0.06	0.12	0.13		0.12	0.15	0.14	0.13	0.12								
Dam	EPD	16	-2.6	78	127	32	70	8	3.98	1.67	17	13		0.04	47	0.56	0.59	0.02								95.12
	ACC	0.28	0.42	0.34	0.33	0.33		0.27	0.07	0.05	0.19	0.20		0.20	0.25	0.24	0.20	0.20								

Balancer Non-Parent Percentile Ranking

	BW	WW	YW	REA	IMF	FAT
Adj	82	738				
Ratio	99.0	122				



VALS 88 CONQUEST 4024 -- AMGV1376567

SIRE: VALS 88 SAND DUNE 6 PONCHO -- AMGV1525997

VALS 88 PAYWEIGHT 6 OF 9-6 -- AMGV1372509

CONNELLY CONFIDENCE PLUS -- AMAN17585576

DAM: VALS 88 CONFIDENCE PLUS 8113 -- AMGV1445348

VALS 88 FINAL ANSWER 613 OF 13 -- AMGV1372132

Really nice red bull that is above average in the breed for almost every trait!

Herdbook Data for Registry No. - AMGV1589763

Bull

Listing No. - 30



Name: VALS 88 STUN GUN 8118

Tattoo: VALS 8118L

GV%: BA45.3

45.3% GV | 54.7% AN

Color: Black (Homo - D)

HPS: Polled

Breeder: 9528 - THE 88 RANCH

DOB: 3/25/2023

Subject Animal	EPD	Expected Progeny Differences											Intake and Carcass						Index Values							
		Growth and Maternal																	\$Cow	FPI	EPI					
		CED	BW	WW	YW	MK	TM	CEM	HP	PG30	ST	DOC	DMI	YG	CW	REA	MB	FT				ADG	RFI			
	11	0.2	74	108	24	61	5	4.99	1.04	19	11		0.05	42	0.40	0.40	0.02									81.56
	ACC	0.18	0.33	0.27	0.25	0.12		0.13	0.04	0.01	0.10	0.12		0.12	0.16	0.15	0.12	0.11								
	Rank	80	65	40	60	40	40	80	60	40	5	70		90	30	75	40	90								50
Sire	EPD	14	-2.0	70	109	26	61	6	3.67	0.84	20	11		0.15	46	0.24	0.44	0.03								84.09
	ACC	0.50	0.57	0.53	0.51	0.25		0.29	0.10	0.05	0.31	0.41		0.32	0.41	0.36	0.38	0.36								
Dam	EPD	8	1.8	72	101	22	57	4	6.31	1.24	17	12		-0.05	34	0.52	0.36	0.01								76.88
	ACC	0.21	0.40	0.30	0.28	0.26		0.19	0.07	0.01	0.13	0.14		0.14	0.19	0.17	0.14	0.12								

Balancer Non-Parent Percentile Ranking

	BW	WW	YW	REA	IMF	FAT
Adj	88	690				
Ratio	105.0	101				



MUSGRAVE 316 STUNNER -- AMAN18467508

SIRE: VALS 88 STUN GUN 11 -- AMGV1526087

VALS 88 PR GRANITE 11Y -- AMGV1201914

BAG SAND DUNE 117D -- AMGV1364073

DAM: VALS 88 SANDDUNE OD 8118 OF 518 -- AMGV1445344

VALS 88 LONG HAUL 518 OF 2210 -- AMGV1336348

Thick & soggy performance type of bull.



Herdbook Data for Registry No. - AMGV1589974

Bull

Listing No. - 31



Name: VALS 88 FREEWAY 8128

Tattoo: VALS 8128L

GV%: BA43

43% GV | 56.6% AN | 0.4% SM

Color: Black

HPS: Polled

Breeder: 9528 - THE 88 RANCH

DOB: 3/16/2023

		Expected Progeny Differences											Intake and Carcass						Index Values				
		Growth and Maternal																					
		CED	BW	WW	YW	MK	TM	CEM	HP	PG30	ST	DOC	DMI	YG	CW	REA	MB	FT	ADG	RFI	\$Cow	FPI	EPI
Subject Animal	EPD	17	-3.0	65	100	27	59	11	6.75	1.22	15	12		-0.11	27	0.46	0.34	-0.02				81.35	
	ACC	0.17	0.21	0.18	0.17	0.13		0.13	0.05	0.04	0.12	0.13		0.13	0.17	0.15	0.13	0.12					
	Rank	10	10	80	80	15	50	3	35	40	45	50		35	80	65	55	20				55	
Sire	EPD	20	-4.6	62	93	27	57	12	6.98	0.61	17	13		-0.10	25	0.36	0.20	-0.02				78.80	
	ACC	0.56	0.62	0.55	0.53	0.27		0.32	0.11	0.09	0.33	0.40		0.35	0.44	0.41	0.40	0.36					
Dam	EPD	14	-1.3	67	106	26	60	10	6.52	1.83	13	12	0.059	-0.13	30	0.57	0.48	-0.01	-0.025	0.111	96.58	83.76	84.73
	ACC	0.27	0.39	0.28	0.27	0.28		0.26	0.08	0.06	0.19	0.19	0.08	0.17	0.21	0.20	0.18	0.17	0.07	0.06			

Balancer Non-Parent Percentile Ranking

	BW	WW	YW	REA	IMF	FAT
Adj	70	552				
Ratio	*	*				



CONNEALY BLACK GRANITE -- AMAN17028963

SIRE: VALS 88 BLK GRANITE 302 -- AMGV1372413

VALS 88 MS 43U 302 OF DLW920 -- AMGV1266277

MUSGRAVE AVIATOR -- AMAN17264774

DAM: VALS 88 AVIATOR 8128 OF 635 -- AMGV1445351

VALS 88 SAM 635 OF 435 -- AMGV1372481

This bull was a twin and his dam raised them both. Tailored made to use on heifers.

Herdbook Data for Registry No. - AMGV1589766

Bull

Listing No. - 32



Name: VALS 88 PLUS ONE 8140

Tattoo: VALS 8140L

GV%: BA25

25% GV | 75% AN

Color: Black (not Homo - D)

HPS: Polled

Breeder: 9528 - THE 88 RANCH

DOB: 2/28/2023

Sire Verified , 100K

		Expected Progeny Differences											Intake and Carcass						Index Values				
		Growth and Maternal																					
		CED	BW	WW	YW	MK	TM	CEM	HP	PG30	ST	DOC	DMI	YG	CW	REA	MB	FT	ADG	RFI	\$Cow	FPI	EPI
Subject Animal	EPD	16	-0.6	76	131	23	62	7	1.55	1.42	11	12		-0.05	42	0.57	0.31	0.00				84.87	
	ACC	0.44	0.49	0.46	0.45	0.22		0.27	0.05	0.01	0.26	0.40		0.31	0.38	0.34	0.38	0.36					
	Rank	15	45	30	15	50	35	45	90	40	95	50		60	30	40	60	60				35	
Sire	EPD	19	-2.9	70	128	22	58	8	0.02	1.64	9	13		0.02	40	0.57	0.91	0.03				99.85	
	ACC	0.93	0.91	0.91	0.91	0.76		0.86	0.22	0.05	0.27	0.86		0.55	0.69	0.62	0.81	0.75					
Dam	EPD	14	0.5	74	125	24	62	7	3.07	1.19	16	13		-0.14	45	0.59	0.20	-0.04				78.98	
	ACC	0.27	0.41	0.34	0.32	0.30		0.25	0.01	0.01	0.17	0.23		0.17	0.21	0.19	0.18	0.17					

Balancer Non-Parent Percentile Ranking

	BW	WW	YW	REA	IMF	FAT
Adj	88	700				
Ratio	105.0	103				



CONNEALY CONFIDENCE PLUS -- AMAN17585576

SIRE: E&E PLUS ONE -- AMAN19196960

E&E LADY 1023 PRECISION 936 -- AMAN16454439

PRAIRIE PRIDE NEXT STEP 2036 -- AMAN17367599

DAM: VALS 88 NEXT STEP 8140 OF 96 -- AMGV1445355

VALS 88 FORTUNE 96W -- AMGV1130539

Really nice bull that stood out all summer! Does carry a red gene.

Herdbook Data for Registry No. - AMGV1591093

Bull

Listing No. - 33



Name: VALS 88 RAWHIDE 8174 ANGUS

Tattoo: VALS 8174L

GV%: AN0

100% AN

Color: Black

HPS: Polled

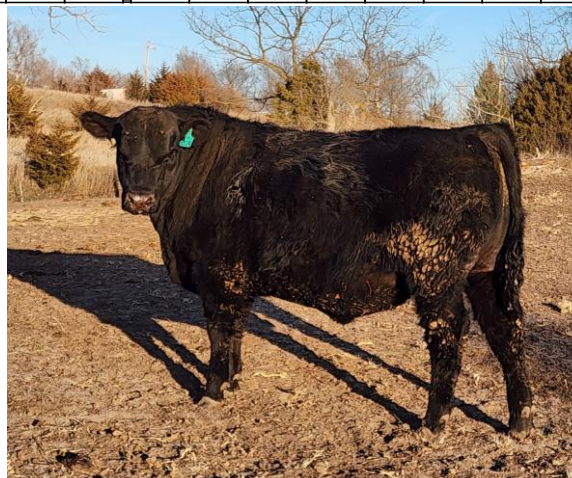
Breeder: 9528 - THE 88 RANCH

DOB: 3/4/2023

Subject Animal	Expected Progeny Differences														Intake and Carcass						Index Values		
	Growth and Maternal																						
	EPD	CED	BW	WW	YW	MK	TM	CEM	HP	PG30	ST	DOC	DMI	YG	CW	REA	MB	FT	ADG	RFI	\$Cow	FPI	EPI
ACC	0.30	-1.0	0.37	0.32	0.30	0.17	0.25			0.06	0.26		0.18	69	0.57	1.07	0.04				112.75		
Rank	25	35	2	1	40	3	5			85	10		>95	1	50	1	>95				1		
Sire	EPD	17	-2.1	102	162	30	81	11	1.21	0.89	13	16	0.32	86	0.46	0.90	0.06				115.52		
ACC	0.92	0.91	0.91	0.89	0.40		0.61	0.01	0.01	0.10	0.84		0.46	0.55	0.49	0.71	0.62						
Dam	EPD	13	-0.3	81	149	18	59	9			12	13	0.04	51	0.67	1.24	0.03				109.80		
ACC	0.62	0.52	0.45	0.39	0.39		0.50			0.12	0.43		0.35	0.41	0.37	0.60	0.46						

Balancer Non-Parent Percentile Ranking

	BW	WW	YW	REA	IMF	FAT
Adj	84	651				
Ratio	103.0	102				



POSS MAVERICK -- AMAN18962396

SIRE: POSS RAWHIDE -- AMAN19416968

POSS BLUEBLOOD 6502 -- AMAN18631711

MGR TREASURE -- AMAN18156972

DAM: DEER VALLEY RITA 8174 -- AMAN19181812

EF RITA 3244 -- AMAN17625557

Mother sold for \$35,000 as an open heifer on Deer Valley's female sale. I then purchased her on a dispersal. She did a superb job producing this bull!

Herdbook Data for Registry No. - AMGV1531747



Name: REBEL J54

Tattoo: HAND J54

GV%: PB83.28984375

83.29% GV | 13.19% AN | 3.374% AR | 0.146% SA

Color: Black

HPS: Polled

Breeder: 11952 - HANDEL FARMS

DOB: 3/26/2021

Subject Animal	Expected Progeny Differences														Intake and Carcass						Index Values		
	Growth and Maternal																						
	EPD	CED	BW	WW	YW	MK	TM	CEM	HP	PG30	ST	DOC	DMI	YG	CW	REA	MB	FT	ADG	RFI	\$Cow	FPI	EPI
ACC	0.49	0.8	0.56	0.51	0.50	0.16	0.23	0.01	0.01	0.30	0.12		-0.28	23	0.93	0.31	-0.02				75.42		
Rank	90	65	65	65	4	25	65	15	25	40	4		40	65	15	25	85				55		
Sire	EPD	10	2.6	92	139	32	77	7	15.00	3.73	15	18	-0.019	-0.29	49	1.12	0.54	-0.04	-0.018	-0.011	122.66	95.33	131.41
ACC	0.51	0.58	0.55	0.56	0.24		0.31	0.13	0.12	0.37	0.42	0.18	0.35	0.45	0.43	0.40	0.36	0.17	0.16				
Dam	EPD	11	-0.4	59	86	31	61	7	6.91	1.19	14	13	-0.25	10	0.61	0.25	-0.02				71.70		
ACC	0.27	0.29	0.32	0.30	0.23		0.17	0.01	0.01	0.20	0.12		0.15	0.22	0.20	0.10	0.10						

GV Active Sire Percentile Ranking

	BW	WW	YW	REA	IMF	FAT
Adj	87	667	1229			
Ratio	112.0	117	109			



CCRO CAROLINA LEVERAGE 3214A -- AMGV1281559

SIRE: DDGR REBEL 28G -- AMGV1446793

DDGR 47E -- AMGV1382318

LRSF LRL HEISMAN D202 -- AMGV1353879

DAM: HAND LADY HEISMAN F27 -- AMGV1531413

HAND AFLAME D247 -- AMGV1470667

Reference Sires

Herdbook Data for Registry No. - AMGV1372413



Name: 88 BLK GRANITE 302

Tattoo: VALS 302D

GV%: BA35.9375

35.938% GV | 63.281% AN | 0.781% SM

Color: Black

HPS: Polled

Breeder: 9528 - THE 88 RANCH

DOB: 3/10/2016

Subject Animal	Expected Progeny Differences												Intake and Carcass						Index Values			
	Growth and Maternal																					
	EPD	CED	BW	WW	YW	MK	TM	CEM	HP	PG30	ST	DOC	DMI	YG	CW	REA	MB	FT	ADG	RFI	\$Cow	FPI
EPD	20	-4.6	62	93	27	57	12	6.98	0.61	17	13		-0.10	25	0.36	0.20	-0.02				78.80	
ACC	0.56	0.62	0.55	0.53	0.27		0.32	0.11	0.09	0.33	0.40		0.35	0.44	0.41	0.40	0.36					
Rank	4	3	85	85	20	60	3	35	40	25	30		40	80	75	80	25				65	
EPD	18	-1.6	82	122	26	65	12	7.58	-0.17	12	15	0.065	0.12	48	0.37	0.41	0.03	0.071	-0.004	86.88	90.76	163.89
ACC	0.96	0.93	0.87	0.92	0.91		0.93	0.55	0.44	0.61	0.92	0.31	0.60	0.77	0.72	0.88	0.85	0.27	0.22			
EPD	18	-3.7	61	89	27	58	10	6.38	1.39	18	9		-0.20	24	0.57	0.12	-0.03				74.88	
ACC	0.31	0.47	0.37	0.34	0.35		0.26	0.12	0.11	0.19	0.23		0.19	0.23	0.22	0.21	0.18					

Balancer Active Sire Percentile Ranking

	BW	WW	YW	REA	IMF	FAT
Adj	71	728				
Ratio	84.2	104				



CONNEALY CONSENSUS 7229 -- AMAN16447771

SIRE: CONNEALY BLACK GRANITE -- AMAN17028963

EURALGA OF CONANGA 9109 -- AMAN16448837

JKGF 43U -- AMGV1063542

DAM: VALS 88 MS 43U 302 OF DLW920 -- AMGV1266277

DLW MS COWMAKER 920W OF 301 -- AMGV1118794

Herdbook Data for Registry No. - AMGV1526165



Name: 88 CC2 506 DETOUR

Tattoo: VALS 506J

GV%: PC21.9

21.9% GV | 78.1% AN

Color: Black (Homo - D)

HPS: Polled

Breeder: 9528 - THE 88 RANCH

DOB: 3/19/2021

Subject Animal	Expected Progeny Differences												Intake and Carcass						Index Values			
	Growth and Maternal																					
	EPD	CED	BW	WW	YW	MK	TM	CEM	HP	PG30	ST	DOC	DMI	YG	CW	REA	MB	FT	ADG	RFI	\$Cow	FPI
EPD	15	-2.5	75	117	21	58	7	4.58	1.80	13	13		0.00	53	0.62	0.46	0.01				88.54	
ACC	0.46	0.54	0.48	0.45	0.17		0.21	0.01	0.01	0.28	0.13		0.30	0.38	0.36	0.31	0.30					
Rank	25	15	35	30	60	50	40	60	25	65	30		85	10	50	20	85				15	
EPD	11	0.3	86	139	17	60	5	4.00	0.64	6	16		-0.06	61	0.87	0.52	0.00				92.53	
ACC	0.55	0.64	0.58	0.55	0.29		0.34	0.07	0.05	0.32	0.39		0.34	0.44	0.41	0.37	0.35					
EPD	17	-3.1	64	98	25	57	8	5.16	2.97	19	11		0.04	39	0.33	0.37	0.01				81.05	
ACC	0.29	0.45	0.37	0.35	0.36		0.26	0.11	0.10	0.22	0.18		0.21	0.28	0.26	0.18	0.17					

Balancer Active Sire Percentile Ranking

	BW	WW	YW	REA	IMF	FAT
Adj	86	698				
Ratio	101.0	104				



CONNEALY CONFIDENCE PLUS -- AMAN17585576

SIRE: VALS 88 CONFIDENCE PLUS 602 -- AMGV1439804

VALS 88 CASH 602 OF 478 -- AMGV1372213

CONNEALY CAPITALIST 028 -- AMAN16752262

DAM: VALS 88 CAPITAL 506 OF 106 -- AMGV1336301

VALS 88 CINCH 106Y -- AMGV1201849



Reference Sires

Herdbook Data for Registry No. - AMAN19405246



Name: SQUARE B TRUE NORTH 8052  
American Angus Association Registration # 19405246

Tattoo: 8052  
GV%:  
Color: 100% AN  
HPS: Polled

Breeder: Unknown

Subject Animal	Expected Progeny Differences												Intake and Carcass						Index Values				
	Growth and Maternal																						
	EPD	CED	BW	WW	YW	MK	TM	CEM	HP	PG30	ST	DOC	DMI	YG	CW	REA	MB	FT	ADG	RFI	\$Cow	FPI	EPI
ACC	0.91	0.91	0.91	0.89	0.57		0.74	0.16	0.11	0.14	0.86		0.47	0.56	0.51	0.73	0.66				106.55		
Rank	3	3	30	15	1	4	3	30	80	65	30		>95	35	75	1	>95				1		
Sire	EPD	14	-1.6	76	133	28	65	10	13.93	-2.22	12	13	-0.179	0.13	37	0.21	0.74	0.03	-0.199	-0.057	93.84	95.97	23.00
ACC	0.95	0.93	0.89	0.92	0.85		0.90	0.48	0.28	0.44	0.91		0.51	0.58	0.74	0.69	0.85	0.80	0.45	0.35			
Dam	EPD	13	-1.5	89	152	26	72	4	1.29	-0.25	14	15		0.07	55	0.68	0.89	0.04			106.67		
ACC	0.55	0.56	0.58	0.57	0.47		0.51	0.27	0.21	0.23	0.56		0.41	0.48	0.46	0.54	0.51						

Balancer Active Sire Percentile Ranking

	BW	WW	YW	REA	IMF	FAT
Adj	0					
Ratio	*					

COLEMAN CHARLO 0256 -- AMAN16879074  
SIRE: S A V RAINFALL 6846 -- AMAN18578963  
S A V BLACKCAP MAY 4136 -- AMAN14739095  
CONNEALY CONSENSUS -- AMAN15513367  
DAM: ELBANNA OF CONANGA 1209 -- AMAN17029025  
ELBASTA OF CONANGA 9703 -- AMAN16449958

Herdbook Data for Registry No. - AMAN19196960



Name: E&E PLUS ONE  
American Angus Association Registration # 19196960

Tattoo: 816  
GV%:  
Color: 100% AN  
HPS: Polled

Breeder: Unknown

Subject Animal	Expected Progeny Differences												Intake and Carcass						Index Values				
	Growth and Maternal																						
	EPD	CED	BW	WW	YW	MK	TM	CEM	HP	PG30	ST	DOC	DMI	YG	CW	REA	MB	FT	ADG	RFI	\$Cow	FPI	EPI
ACC	0.93	0.91	0.91	0.91	0.76		0.86	0.22	0.05	0.27	0.86		0.55	0.69	0.62	0.81	0.75				99.85		
Rank	5	10	55	20	55	50	30	95	25	95	30		90	30	55	1	95				2		
Sire	EPD	16	-2.1	83	147	31	72	5	2.84	0.93	13	14		0.06	65	0.93	0.75	0.05			102.55		
ACC	0.93	0.91	0.91	0.91	0.84		0.88	0.33	0.24	0.42	0.90		0.56	0.70	0.64	0.86	0.82						
Dam	EPD	18	-2.7	57	96	19	48	10	-2.29	2.35	10	11		0.12	33	0.13	0.64	0.03			82.50		
ACC	0.39	0.46	0.45	0.42	0.37		0.36	0.24	0.08	0.19	0.35		0.30	0.36	0.34	0.38	0.36						

Balancer Active Sire Percentile Ranking

	BW	WW	YW	REA	IMF	FAT
Adj	0					
Ratio	*					

CONNEALY CONFIDENCE 0100 -- AMAN16761479  
SIRE: CONNEALY CONFIDENCE PLUS -- AMAN17585576  
ELBANNA OF CONANGA 1209 -- AMAN17029025  
E&B 1680 PRECISION 1023 -- AMAN13913492  
DAM: E&E LADY 1023 PRECISION 936 -- AMAN16454439  
E&B LADY 878 NEW DESIGN 441 -- AMAN14755423

Reference Sires

Herdbook Data for Registry No. - AMAN19416968



Name: POSS RAWHIDE

Tattoo: 9513

American Angus Association Registration # 19416968

GV%:  
Color:

100% AN  
HPS: Polled

Breeder: Unknown

Subject Animal	Expected Progeny Differences												Intake and Carcass						Index Values								
	Growth and Maternal																		\$Cow	FPI	EPI						
	CED	BW	WW	YW	MK	TM	CEM	HP	PG30	ST	DOC	DMI	YG	CW	REA	MB	FT	ADG				RFI					
EPD	17	-2.1	102	162	30	81	11	1.21	0.89	13	16		0.32	86	0.46	0.90	0.06								115.52		
ACC	0.92	0.91	0.91	0.89	0.40		0.61	0.01	0.01	0.10	0.84		0.46	0.55	0.49	0.71	0.62										
Rank	15	20	1	1	10	1	5	90	40	65	4		>95	1	70	1	>95								1		
EPD	11	-1.0	91	148	36	81	4	1.97	0.20	14	15		0.27	77	0.48	1.26	0.06								112.44		
ACC	0.87	0.90	0.90	0.90	0.79		0.83	0.01	0.01	0.18	0.80		0.52	0.64	0.57	0.78	0.70										
EPD	14	-1.8	91	155	22	69	10	0.45	1.59	12	13		0.27	68	0.28	0.59	0.05								100.43		
ACC	0.36	0.38	0.38	0.36	0.29		0.31	0.07	0.01	0.08	0.31		0.24	0.28	0.26	0.30	0.28										

Balancer Active Sire Percentile Ranking

	BW	WW	YW	REA	IMF	FAT
Adj	0					
Ratio	*					

BASIN PAYWEIGHT 1682 -- AMAN17038724

SIRE: POSS MAVERICK -- AMAN18962396

POSS PRIDE 5163 -- AMAN18348384

POSS EASY IMPACT 0119 -- AMAN16750909

DAM: POSS BLUEBLOOD 6502 -- AMAN18631711

POSS BLUEBLOOD 920 -- AMAN16482622

Herdbook Data for Registry No. - AMAN18286467



Name: HA COWBOY UP 5405

Tattoo: 5405

American Angus Association Registration # 18286467

GV%:  
Color:

100% AN  
HPS: Polled

Breeder: Unknown

Subject Animal	Expected Progeny Differences												Intake and Carcass						Index Values			
	Growth and Maternal																		\$Cow	FPI	EPI	
	CED	BW	WW	YW	MK	TM	CEM	HP	PG30	ST	DOC	DMI	YG	CW	REA	MB	FT	ADG				RFI
EPD	15	3.1	91	160	17	64	4	9.36	-3.54	11	12	-0.008	0.14	50	0.09	0.33	0.00	0.001	0.001	98.93	91.04	164.06
ACC	0.93	0.92	0.80	0.91	0.90		0.92	0.41	0.29	0.43	0.90	0.11	0.57	0.72	0.65	0.84	0.80	0.10	0.09			
Rank	25	95	3	1	85	25	80	25	>95	85	50	40	>95	15	>95	40	75	30	55	65	10	10
EPD	13	3.7	88	157	26	70	10	4.32	-1.77	10	13	-0.002	0.04	69	0.69	-0.09	0.01	0.001	0.000	80.31	79.14	160.66
ACC	0.75	0.76	0.72	0.67	0.43		0.57	0.20	0.19	0.19	0.68	0.03	0.40	0.48	0.42	0.64	0.56	0.03	0.03			
EPD	15	-0.2	75	128	27	66	6	3.90	-1.91	12	12	-0.004	0.20	53	0.11	0.54	0.02	0.000	0.001	80.27	88.06	131.33
ACC	0.38	0.40	0.39	0.39	0.32		0.32	0.19	0.18	0.22	0.36	0.03	0.29	0.37	0.36	0.30	0.28	0.02	0.02			

Balancer Active Sire Percentile Ranking

	BW	WW	YW	REA	IMF	FAT
Adj	0					
Ratio	*					

KG SOLUTION 0018 -- AMAN16796888

SIRE: HA OUTSIDE 3008 -- AMAN17651088

HA EVER LADY 1575 -- AMAN17058509

HA PROGRAM 7328 -- AMAN15818734

DAM: HA BLACKCAP LADY 1602 -- AMAN17055741

HA BLCKCAP LADY 5515 -- AMAN15163079

Reference Sires

Herdbook Data for Registry No. - AMGV1526087



Name: 88 STUN GUN 11

Tattoo: VALS 11J

GV%: BA37.5

37.5% GV | 62.5% AN

Color: Black (Homo - D)

HPS: Polled

Breeder: 9528 - THE 88 RANCH

DOB: 3/3/2021

Subject Animal	Expected Progeny Differences												Intake and Carcass						Index Values			
	Growth and Maternal																					
	EPD	CED	BW	WW	YW	MK	TM	CEM	HP	PG30	ST	DOC	DMI	YG	CW	REA	MB	FT	ADG	RFI	\$Cow	FPI
ACC	0.50	0.57	0.53	0.51	0.25		0.29	0.10	0.05	0.31	0.41		0.32	0.41	0.36	0.38	0.36				84.09	
Rank	40	25	60	55	25	40	60	65	40	5	65		>95	25	90	30	95				40	
EPD	12	-1.8	88	142	33	76	1	-3.42	0.56	15	13	0.181	0.39	75	0.36	0.79	0.09	0.019	0.192	87.25	102.95	137.78
ACC	0.95	0.92	0.81	0.91	0.89		0.90	0.51	0.23	0.39	0.88	0.56	0.57	0.72	0.66	0.84	0.79	0.51	0.42			
EPD	13	0.0	62	91	20	51	9	10.76	1.12	19	13		-0.09	22	0.32	0.17	-0.02				69.94	
ACC	0.34	0.51	0.38	0.36	0.39		0.29	0.13	0.13	0.24	0.29		0.20	0.26	0.26	0.19	0.17					

Balancer Active Sire Percentile Ranking

	BW	WW	YW	REA	IMF	FAT
Adj	85	700				
Ratio	100.0	103				



LD CAPITALIST 316 -- AMAN17666102

SIRE: MUSGRAVE 316 STUNNER -- AMAN18467508

MCATL BLACKBIRD 831-1378 -- AMAN16896985

DCSF POST ROCK GRANITE 200P2 -- AMGV930426

DAM: VALS 88 PR GRANITE 11Y -- AMGV1201914

DDGR CENTERFOLD 6W -- AMGV1119945

Herdbook Data for Registry No. - AMAN19829215



Name: CONNEALY GUARD RAIL 923E

Tattoo: 923E

American Angus Association Registration # 19829215

GV%:

100% AN

Color:

HPS: Polled

Breeder: Unknown

Subject Animal	Expected Progeny Differences												Intake and Carcass						Index Values			
	Growth and Maternal																					
	EPD	CED	BW	WW	YW	MK	TM	CEM	HP	PG30	ST	DOC	DMI	YG	CW	REA	MB	FT	ADG	RFI	\$Cow	FPI
ACC	0.79	0.82	0.78	0.55	0.35		0.50			0.17	0.56		0.41	0.49	0.42	0.66	0.56				108.21	
Rank	3	2	15	10	1	1	5			35	30		>95	15	90	1	95				1	
EPD	16	-2.5	93	158	32	79	6	9.34	0.02	20	14	-0.084	0.14	62	0.48	0.80	0.03	0.194	-0.182	134.88	109.69	298.28
ACC	0.94	0.93	0.93	0.92	0.75		0.85	0.33	0.21	0.49	0.91	0.31	0.59	0.73	0.71	0.84	0.79	0.27	0.19			
EPD	17	-3.9	75	120	25	65	10			12	12		0.12	52	0.37	0.86	0.03				100.96	
ACC	0.29	0.32	0.34	0.31	0.21		0.26			0.11	0.28		0.23	0.28	0.25	0.28	0.26					

Balancer Active Sire Percentile Ranking

	BW	WW	YW	REA	IMF	FAT
Adj	0					
Ratio	*					

TEHAMA UPWARD Y238 -- AMAN16760354

SIRE: TEHAMA TAHOE B767 -- AMAN17817177

TEHAMA MARY BLACKBIRD Y684 -- AMAN16876258

CONNEALY LEGENDARY 644L -- AMAN18534952

DAM: QUEEN BABES OF CONANGA 870J -- AMAN19322216

QUEEN BARB OF CONANGA 60C -- AMAN18760359

Herdbook Data for Registry No. - AMGV1525997



Name: 88 SAND DUNE 6 PONCHO

Tattoo: VALS 6H

GV%: BA34.4

34.4% GV | 37.5% AN | 28.1% AR

Color: Black (not Homo - D) HPS: Polled

Breeder: 9528 - THE 88 RANCH

DOB: 3/19/2020

		Expected Progeny Differences											Intake and Carcass						Index Values				
		Growth and Maternal																					
		CED	BW	WW	YW	MK	TM	CEM	HP	PG30	ST	DOC	DMI	YG	CW	REA	MB	FT	ADG	RFI	\$Cow	FPI	EPI
Subject Animal	EPD	15	-1.5	70	103	26	61	8	8.69	0.08	17	13		0.07	37	0.29	0.27	0.01				79.25	
	ACC	0.16	0.20	0.17	0.17	0.12		0.12	0.06	0.06	0.12	0.13		0.12	0.15	0.14	0.13	0.12					
	Rank	25	30	60	70	25	40	30	20	70	20	25		95	45	90	70	80				65	
Sire	EPD	17	-3.8	63	88	25	56	9	5.47	-2.08	17	14	0.037	-0.04	26	0.29	0.09	-0.01	-0.035	0.048	106.96	73.89	61.66
	ACC	0.48	0.53	0.45	0.45	0.22		0.29	0.13	0.12	0.33	0.38	0.11	0.32	0.39	0.37	0.36	0.34	0.11	0.09			
Dam	EPD	12	0.8	78	118	28	66	8	11.90	2.25	18	12		0.17	48	0.29	0.44	0.04				84.61	
	ACC	0.26	0.41	0.35	0.34	0.32		0.23	0.13	0.12	0.20	0.21		0.21	0.27	0.26	0.20	0.20					

Balancer Non-Parent Percentile Ranking

	BW	WW	YW	REA	IMF	FAT
Adj	89	685				
Ratio	109.0	107				

HXC HXC CONQUEST 4405P -- AMAR975924  
 SIRE: VALS 88 CONQUEST 4024 -- AMGV1376567  
           VALS 88 HOJO 4024 -- AMGV1376560  
  
BASIN PAYWEIGHT 1682 -- AMAN17038724  
 DAM: VALS 88 PAYWEIGHT 6 OF 9-6 -- AMGV1372509  
           DDGR CENTERFOLD 6W -- AMGV1119945